



REMOTE LEARNING

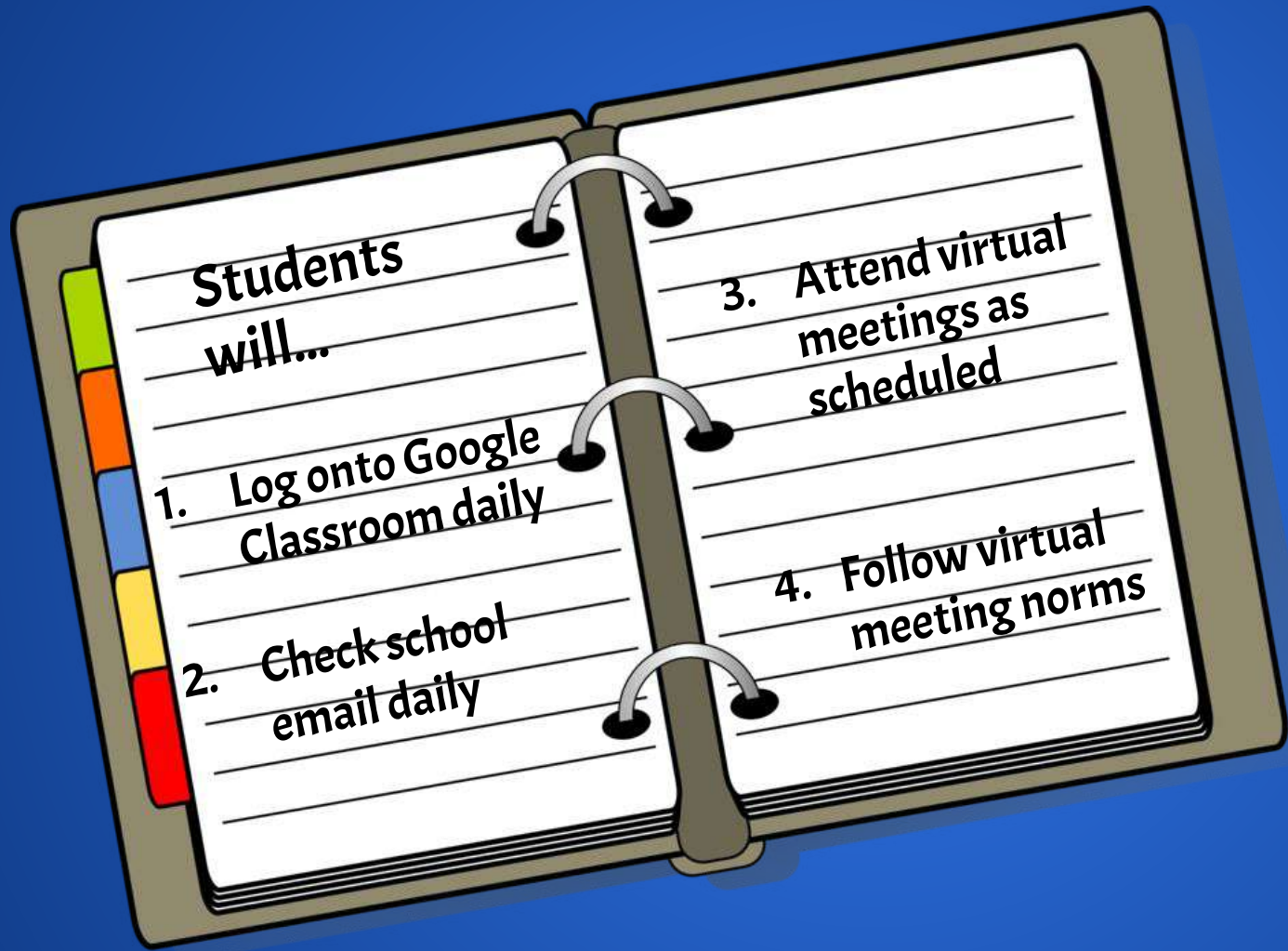
Miss Leitch
A Track/6th Grade
Eastvale Elementary

DISTANCE LEARNING VS. REMOTE LEARNING

- **Voluntary Participation**
- **Enrichment or Reteaching Activities**
- **Grades could not be lower than trimester 2**
- **Assignments listed in multiple platforms depending on teacher preference**



- **Mandatory Attendance and participation**
- **Standards based grade level instruction**
- **Work is evaluated and graded**
- **Grades will be posted in Student/Parent Connect**
- **Assignments listed in Google Classroom**



**Students
will...**

**1. Log onto Google
Classroom daily**

**2. Check school
email daily**

**3. Attend virtual
meetings as
scheduled**

**4. Follow virtual
meeting norms**

**STUDENT
EXPECTATIONS**

ATTENDANCE POLICY



Attendance will be monitored by:

- Logging into Google Classroom
- Attending virtual meetings/lessons
- Submission of completed assignments by due date (Sunday of each week)

***Please notify teacher ahead of time if you are going to miss a virtual meeting.**

ASSIGNMENT INFORMATION

- Work will be posted daily Monday-Friday at 8:00am on Google Classroom.
- Assignments are DUE by 11:59 PM Sunday.
- Work can be completed/submitted at any time during the week.
- Late work will NOT be counted!!!



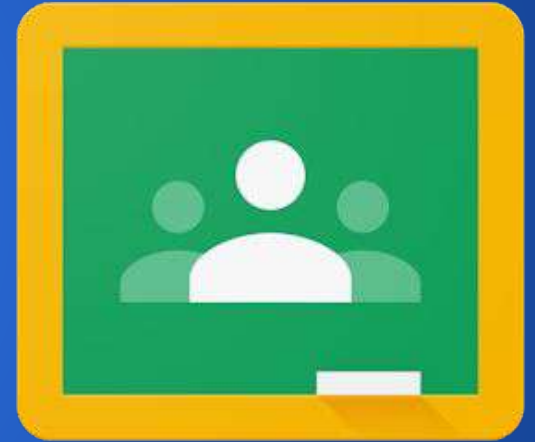
IReady Diagnostics

- Students will be taking a diagnostic in Math and Reading starting on Tuesday, July 7th.
- It is a placement assessment to assign individual math and reading levels.
- It is imperative that students complete these assessments independently, **WITHOUT** any help.

GOOGLE CLASSROOM INFORMATION

Class Code

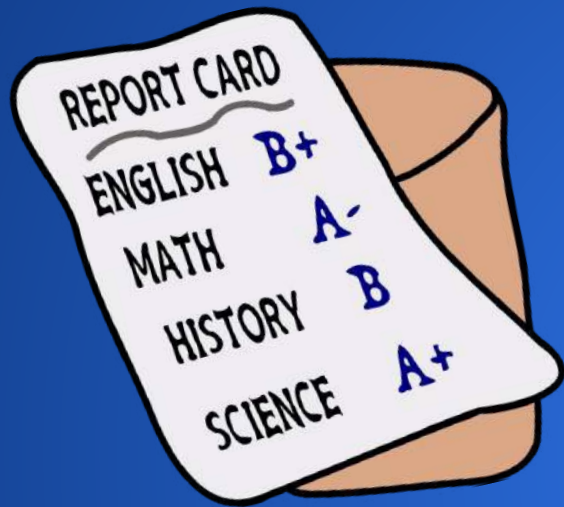
5jplybw



ACADEMICS



- Standards based curriculum
- Students should be working approximately 3-4 hours daily
- Focus on math, reading, writing, social studies and/or science

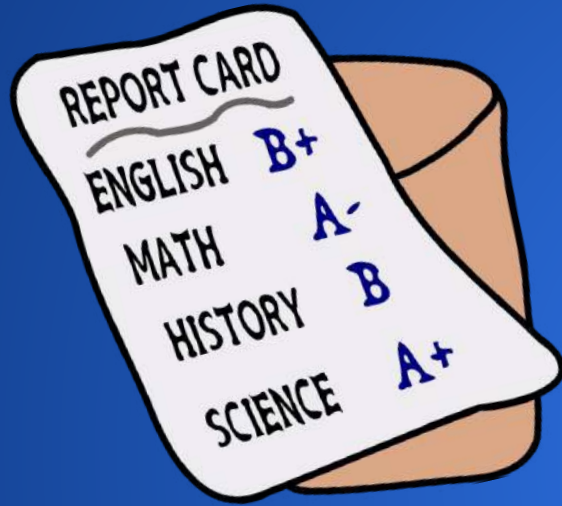


GRADING SCALE

A+	99.5
A	93
A-	90
B+	87
B	83
B-	80
C+	77
C	73
C-	70
D+	67
D	63
D-	60
F	0

O	Outstanding
S	Satisfactory
N	Needs Improvement

Check grades on Parent Connect/Student Connect



PROGRESS REPORTS

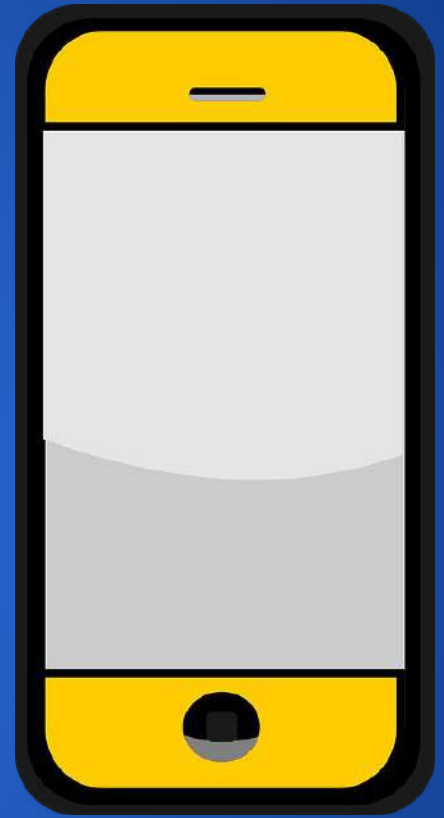
- You can choose to receive a Guardian Summary from Google Classroom - an invitation via email will be sent.
- Includes - missing work, upcoming work and class activity.
- Does not display grades - check Parent Connect for grades!

- **Office Hours Daily**
 - **M-F 8:30-2:30**
 - **Via Remind or Email**
- **Virtual Meetings**
 - **Tuesdays and Thursdays**
 - **11:00am-12:00pm (whole class)**
 - **12:00pm-12:30pm (Intervention)**
 - **Zoom or Google Meets**



CONTACT INFO

- Remind
 - See next slide for instructions on how to sign-up
- Email
 - eleitch@cnusd.k12.ca.us





<https://www.remind.com/join/leitch6>

Pick a way to receive messages for **2020-2021**:

A If you have a smartphone, get push notifications.

On your iPhone or Android phone, open your web browser and go to the following link:

rmd.at/leitch6

Follow the instructions to sign up for Remind. You'll be prompted to download the mobile app.



B If you don't have a smartphone, get text notifications.

Text the message @leitch6 to the number 81010.

If you're having trouble with 81010, try texting @leitch6 to (951) 893-5000.

** Standard text message rates apply.*



Don't have a mobile phone? Go to rmd.at/leitch6 on a desktop computer to sign up for email notifications.

VIRTUAL MEETING EXPECTATIONS



- Chat is used for academic purposes only
- Ensure your name is correct at all times
- No other "devices" or distractions during meetings
- Keep background appropriate
- Follow school dress code
- No profanity or inappropriate language
- Follow your PAWS

*If these expectations are not followed, students can be removed from virtual meetings and guardians will be contacted.

Mute yourself!



Be on time!



Turn on video!



Come prepared!



Sit still!



Be respectful!



Find a quiet place!



Raise your hand to talk!



No eating!





**WELCOME TO
6TH GRADE**