

WELCOME TO FIFTH GRADE!

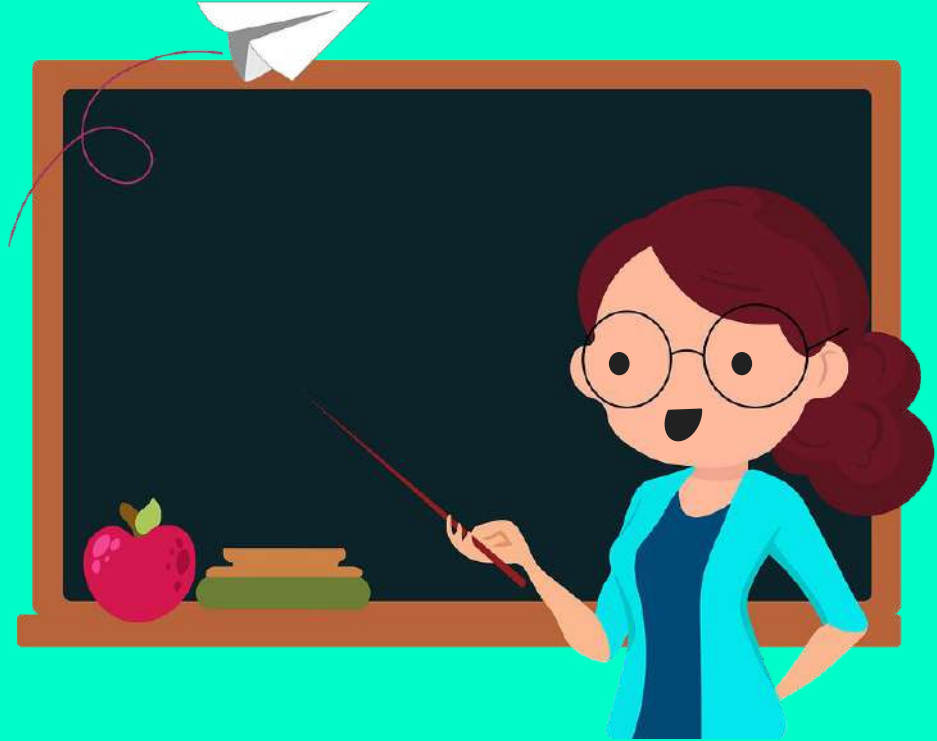


Yolanda Elementary

Mrs. Pratt
Mrs. Paschall

RETURN TO LEARN

School starts on
Wednesday,
September 8th!



MRS. PRATT

I am excited to start my 21st year of teaching. I have taught grades 3rd-7th. I have been married for 28 years and have a 23 year old daughter, Kaity, and a 25 year old daughter, Hailey. We have a Havanese named Rosey and 2 goats. I love Oregon sports, camping, playing cards, and spending time with family.



MRS. PASCHALL

I have taught at Yolanda for 24 years and I can't wait to start another year! My husband and I have 3 daughters. I enjoy cooking, reading, and naps :)



OUR SCHOOL RULES ARE:

BE SAFE

BE RESPECTFUL

BE RESPONSIBLE

FACE COVERINGS

- It is required that your student wears a mask to school everyday.
- Please help your child understand the proper use and storage of his/her mask. Please wash masks frequently or plan to use disposable masks.
- Face shields are only acceptable as an alternative for a face covering when the student has a medical condition or disability preventing the use of traditional face coverings.



Permitted Face Coverings:



Cloth face mask



Disposable face mask



N95 face mask

Face Coverings Not Allowed:



Neck gaiter



Face shield

Any item that does not snugly cover your mouth and nose

Information:

CDC mask guidance

<https://www.cdc.gov/coronavirus/2019-ncov/prevent-getting-sick/about-face-coverings.html>



THIS IS THE WAY



WEAR A MASK



NO



NO



NO



NO



NO

ARRIVAL AND DISMISSAL

Fifth Grade drop off and pick up will happen at the front of the school.

Gates open at 8:15. Your child will wait in the gym until classroom doors open at 8:25.

After school, teachers will bring students to the designated spot to meet families in their car or to walk home.

Bus riders will be accompanied to and from the bus parking area.



PLEASE [CLICK HERE](#) TO
FILL OUT OUR
TRANSPORTATION
SURVEY

- **Gates open at 8:15**
- **Classrooms open at 8:25**
- **Wait in the gym until 8:25**
- **Free breakfast in classroom**

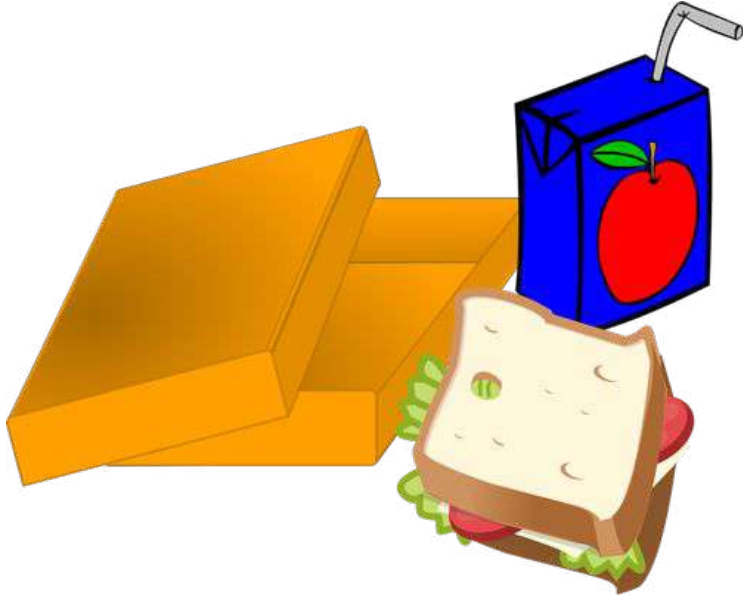


WHAT TO BRING TO SCHOOL EVERY DAY



- Mask
- Chromebook & charging cable
- Water bottle
- Jacket
- Backpack
- Headphones or earbuds
- Lunch
 - The school will also provide free a lunch if preferred.

BREAKFAST & LUNCH



Every student has the opportunity to receive a free breakfast and lunch.

If students bring a lunch from home, they may purchase milk for an additional \$0.40.

Students will eat breakfast in the classroom, and lunch in the cafeteria.

Please label lunch bags.

CHROMEBOOKS

Your student is responsible for bringing the Chromebook to school daily and making sure it's fully charged. Please help your student find a safe place to store the Chromebook and clean it often.

Please send students with the chromebook charging cord every day!



Unfortunately at this time we
won't be able to have any
volunteers in the school or have
any field trips.



COMMUNICATION

Teachers will have scheduled office hours from 3:00-3:30 daily. We can be reached via email or phone call.



Heidi Pratt

541-744-6418 x31240

Text or call 541-896-1387

heidi.pratt@springfield.k12.or.us

Amy Paschall

541-744-6418 or text/call 541-952-2055

amy.paschall@springfield.k12.or.us

WE'RE LOOKING
FORWARD TO A GREAT
SCHOOL YEAR WITH
YOU!

