



LAKWOOD ELEMENTARY SCHOOL

Welcome to 5th Grade



Please type your student's name in the chat!

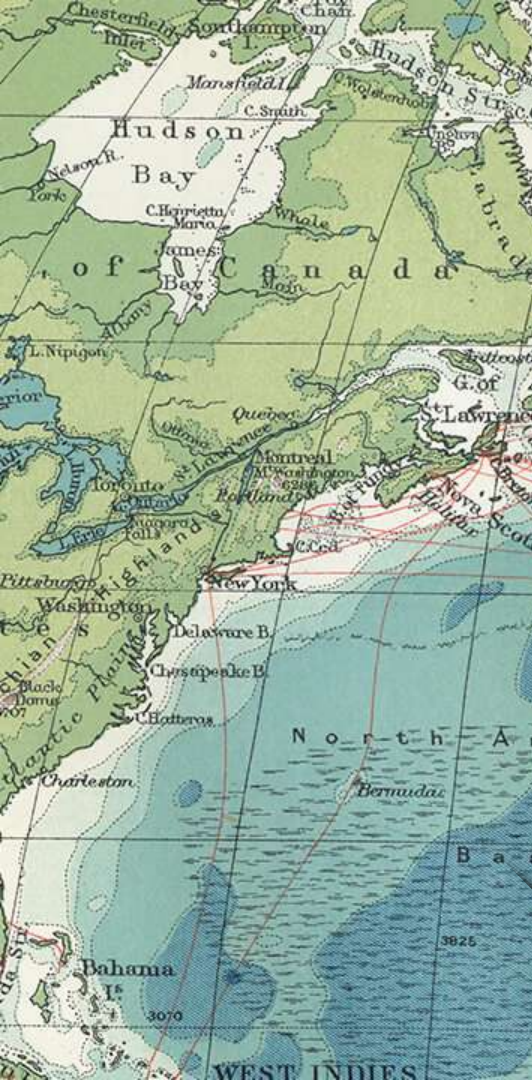
Meet your Teachers

Ms. Adams – Math & Science

Mrs. Mire – ELA & S.S.

Ms. Landry - Small group Math & ELA

Mr. Jones - Para



A Day in the Life of my 5th Grader



- Students start the day with their homeroom teacher for morning meeting.
- Students will stay with their homeroom teacher to be taught the respective subjects.
Classes will switch at **12:15** and will remain with their switch teacher for the duration of the day.
- Students **will** be able to eat in the cafeteria this year. They will be escorted to lunch and brain break by their switch teacher.

Assessments



- There will be 2 summatives (tests) and 7 formatives (quizzes) per quarter.
- Most assessments will be done electronically by students
- Most assessments administered electronically can be viewed by parents by logging into Edulastic using their students' login credentials

ELA



- In ELA we implement 3 **ELA Guidebooks Units**. These units are a set of plans grounded in a collection of texts. Each text collection has a shared idea, ex: Communication, and contains authentic texts and novels focused on that idea.
- Students engage with the texts and ideas repeatedly throughout a unit to build knowledge and tackle big ideas.
- Reading and writing will be **combined into one 90-minute ELA block.**

ELA



- We will begin this year with our Wonderstruck unit. While the district provides a text for each student, they are not allowed to write in them. If you would like the purchase your student their own text to mark up, our first two texts are *Wonderstruck* by **Brian Selznick** and *Frindle* by **Andrew Clements**.

Social Studies




- Will be taught every day.
- Focus is United States History from the **early civilizations through 1763**
- Shift in teaching and learning approach – more discussion, more document based instruction & assessment
 - **The state's Scope and Sequence and Studies Weekly** will be used to guide instruction.

Social Studies



- Frequent review of resources, guiding questions, and vocabulary is helpful in achieving success.
- There will be interactive notetaker's for each topic that the students will complete in class.

Math

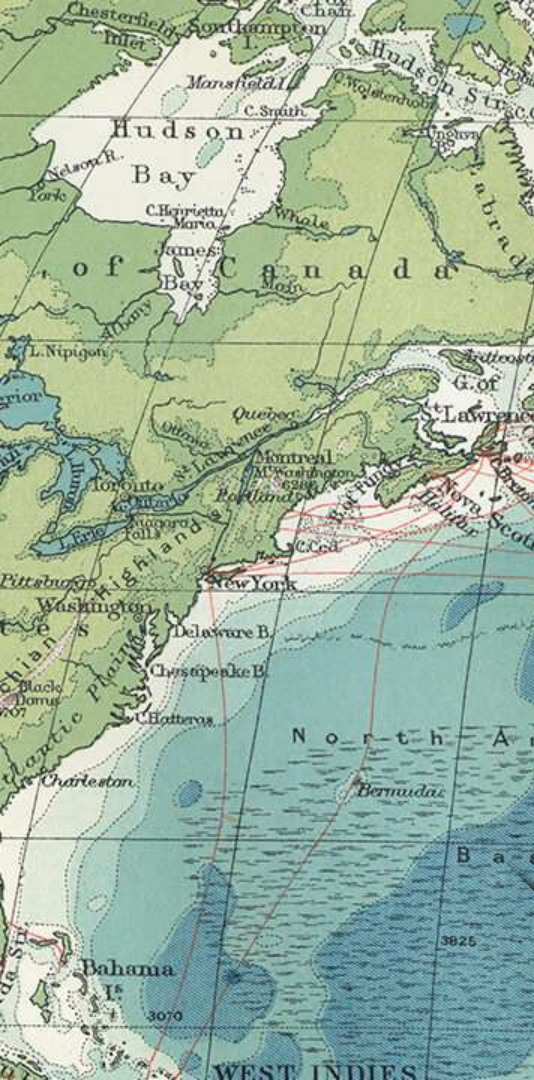
- 90 minute  block of time
- In addition to nightly practice, students will have spiral homework each week.
- Teacher made formative assessments will be administered and utilized to assess student success and guide additional instruction.
- Comprehensive Formative Assessments as well as Teacher made Summative assessments will be administered for each module which will allow students to show success on skills and concepts taught in class.
- QR Codes will be issued for each module. Download a QR Code Reader and scan the code for math homework help.

Science

- PhD Science Curriculum is based on investigation of scientific phenomena through research and experimentation.
- Students will utilize scientific knowledge, and a variety of resources while investigating and reflecting on their discoveries.
- Notes sheets will be given at the start of each unit and **will be filled in as concepts are investigated and discussed in class.**
- Review and discussions **NIGHTLY** will play an essential role in your child's success.

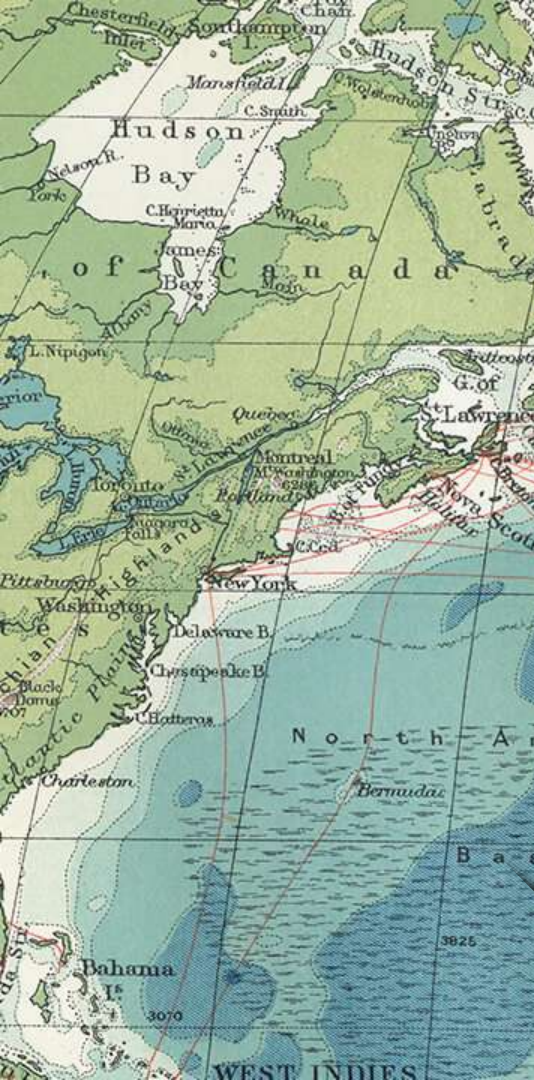
What's in a PIG?

- The Parent Involvement Guide (PIG) is sent home every Monday and contains important information about the week's lessons, activities, and assessments.
- The PIG is also posted and is accessible on each teacher's website.




Graded Papers

- Communication Folders will be sent home **every Wednesday** in a red graded paper folder.
- Please review and sign the appropriate place before returning the folder and all of its contents each **Friday**.



Chromebooks

- 5th grade students have been  given the responsibility of using Chromebooks in class and at home (when necessary).
- Chromebooks will be used in class to complete and turn in assignments.
 - Each student will be given their login information.
 - Proper usage and care of Chromebooks is a **MUST**
- There will be a cost associated with damaged chrome books.
 - **Please make sure your child has working earbuds/headphones with them at all times.**

Google Classroom Access

1. Open Google Chrome.

2. Click on the blue sign in the top right corner.



Google



3. Login using student's username (add @stcharles.k12.la.us behind your username) and password.

4. Click on the icon for Google Apps for the Classroom icon to pop up. Click on it.



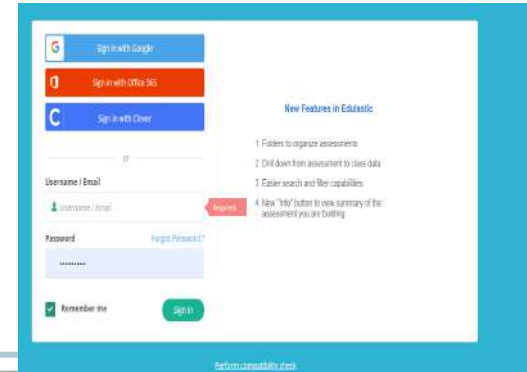
Google



5. Go into your classroom. Enjoy your learning experience!

Edulastic

- To Access Edulastic from home, you can follow the steps below:
 - First sign into the Google Drive using your student's login credentials.
 - Then, Go to: www.Edulastic.com and click on the “Log In” button at the top right.
 - Then click the “Sign in with Google” button




Behavior



- Our class has the opportunity to earn class incentives using goal charts.
- When our class chart has been filled, the **students will receive a class reward** of some sort. Parents are asked to volunteer to help with purchasing class incentive treats.
- We also have a school-wide reward system where our student body can earn dress-down days when behavior goals are reached.

Behavior

- **Minor Behavior:**
 - Reminder and warning 
 - Personal & Social – contact home
 - Classroom consequence issued
 - When there is a pattern of a particular behavior, administration will intervene
 - Meeting to set goals
 - School-wide consequence is issued
 - Lunch detention/before or after-school detention
 - Referral
 - In-school
 - After-school detention

Behavior



- **Major Behavior:**
 - The way major behavior issues will be handled depends exclusively on the behavior being displayed.
 - Students can meet with administration as a first step
 - Students may also be issued a Referral and receive a full day suspension or expulsion depending on the severity of the behavior.

RESET Room

Reflect Empathize Strategize Explain Take Action

- Proactive
 - a place to calm and support students who need to take a break outside of the classroom.
- Restorative
 - a place to help students to regroup and “RESET” in order to return to class successfully after an incident has occurred.
- Consequential
 - a place to serve punitive consequences in a structured setting.

SchoolStatus



SchoolStatus will be used for all parent-teacher communication. Communication may come via text message, e-mail, or phone call.

Pivot Schedule



ELA Homeroom Daily Schedule

8:30	Arrival
8:40-9:00	Morning Meeting
9:00-9:50	Enrichment
9:50-11:20	ELA
11:20-12:15	SS
12:15-12:20	Switch
12:20-1:00	Start math
1:00-1:30	Lunch
1:30-1:50	Brain Break
1:50-2:40	Finish Math
2:40-3:35	Science
3:35	Pack Up/Dismissal

Math Homeroom Daily Schedule

8:30	Arriva;
8:40-9:00	Morning Meeting
9:00-9:55	Science
9:55-10:45	Enrichment
10:45-12:15	Math
12:15-12:20	Switch
12:30-1:00	Lunch
1:00-1:20	Brain Break
1:20-2:05	Social Studies
2:05-3:35	ELA
3:35-3:40	Closing Circle/Dismissal

A detailed historical-style map of the Atlantic Ocean and Europe. The map shows the eastern coast of North America, including Hudson Bay, James Bay, and the Gulf of St. Lawrence. It also shows the European continent, including the British Isles, France, and the Mediterranean Sea. The map is overlaid with a white text box containing promotional information for a school's Twitter account.

Follow our School on
Twitter

@lakewood_gators

Posts will include
pictures,
news, reminders, etc.

