

Walnut Ridge Elementary

Alternative Method of Instruction Verification Form

Day 1 _____ **Day 2** _____ **Day 3** _____ **Day 4** _____ **Day 5** _____

This form certifies that your child completed work for the designated day. This will allow your child to receive attendance credit for this day. In the event it is not completed, your child will receive an unexcused absence.

My child, _____ completed all work assigned for Day _____.

My child also worked on the following website:

_____.

Parent's Signature _____ **Date** _____

Day 2 Instructions:

- Reading: Read the passage and complete the questions that follow.
- Math: Complete math problems.
- Science: Read the passage and complete the questions that follow.
- Writing: Complete the writing prompt with at least 5-7 sentences if not more.

Name: _____

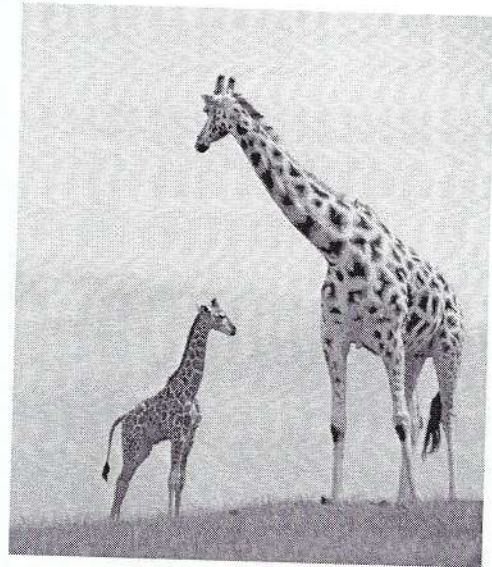
Reading

The Long Giraffe

by Guy Belleranti

Most people know what a giraffe looks like. They're tall, spotted animals from the African savanna. They're famous for their long necks that allow them to munch on treetop leaves that other animals cannot reach.

With its 6-foot long legs and 6-foot long neck a male giraffe can grow over 18 feet in height. That's almost as tall as a two-story building! Even a baby giraffe has a long neck and legs. In fact, the calf is 6 feet tall at birth and can stand within an hour.



We humans have seven bones, or vertebrae, in our short little necks. So, how many vertebrae do you think a giraffe has in its neck? Maybe 20? Or 50? Or 100? In fact, a giraffe's neck has exactly the same number of bones in its neck as a human! However, the giraffe's vertebrae are larger and much longer.

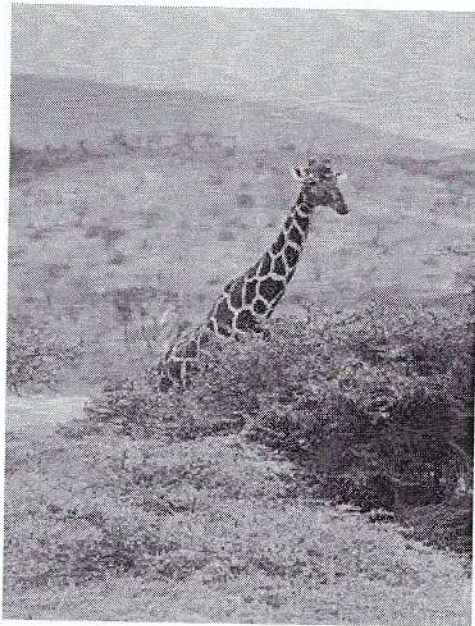
A giraffe's heart is also long, with a male's heart being up to two feet. It takes a powerful heart to move blood up the long neck into the brain. The giraffe has special valves in their arteries. These valves prevent blood from rushing to the head when the giraffe bends low to drink. And when it drinks it takes a long drink, swallowing up to 10 gallons of water. The giraffe must spread its long legs apart so its long neck can reach the water. Since it can't protect itself when in this position it doesn't drink very often. Instead, it gets a lot of moisture from the plants it eats.

And speaking of plants, a giraffe's favorite food is the leaves of the thorny acacia tree. The giraffe wraps its long 18-inch tongue around the tree's branches and strips off the leaves. The long tongue's roughness helps protect it from the thorns.

A giraffe is a ruminant, which means it has a four chambered stomach like a cow. After they swallow leaves the first time the giraffe will bring the leaves back up their throat and chew again for long periods.

A healthy adult giraffe does not have many natural predators. Its hooves are as long and wide as a dinner plate, and it can kick its long legs any direction. The kick is so strong it can even kill a lion.

With its long neck, long heart, long tongue, long legs, and long hooves, the giraffe is surely one of the most beautiful animals on the African savanna.



About the Author

Guy Belleranti works as a docent at Reid Park Zoo in Tucson, Arizona.

More Fascinating Giraffe Facts

The giraffe has the shortest sleep requirements of any mammal. A giraffe sleeps less than two hours per day!

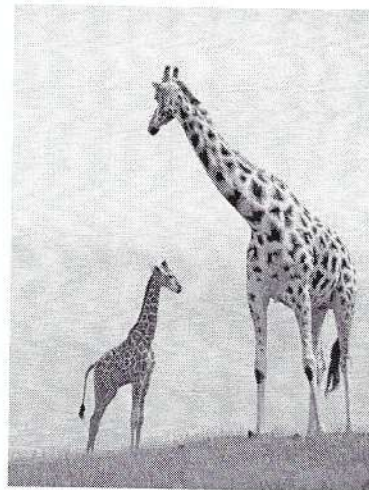
Although they're usually quiet, giraffes can make sounds. Male giraffes can make loud coughs. Females can whistle to call their young. Giraffes can also grunt, snort, and hiss.

A male giraffe is called a bull. A female is a cow, and a young giraffe is a calf. A group of giraffes is a herd.

Name: _____

The Long Giraffe

by Guy Belleranti



1. How many bones are in a giraffe's neck?
a. 7 b. 20
c. 50 d. 100
2. Why does a giraffe need a large, powerful heart?
a. so it can pump blood down into its legs
b. so it can pump blood up to the brain
c. to help the giraffe drink water more easily
d. to help the giraffe digest plants and leaves
3. The second page of the article contains many facts, but there is one sentence that is an opinion. Copy the opinion sentence on the lines below.

4. Complete each sentence by writing a word or number on the line.

A giraffe's tongue is about _____ inches long.

A _____ giraffe is called a cow.

A baby giraffe is about _____ feet tall when it stands up.

A giraffe's favorite food is leaves from a _____ tree.

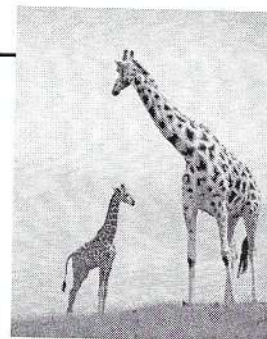
Artist Challenge: On a separate sheet of paper, draw a picture of a giraffe. Include as many details as possible. Below your picture, neatly write the three most interesting facts you learned from this article.

Name: _____

The Long Giraffe

Vocabulary Activity

Fill in the missing letters to create a word from the article.
Then, write the full word on the line. Be sure you spell each word correctly.



1. _ _ o _ e s

clue: hard coverings over the toes of
horses, cattle, deer, or giraffes

1. _____

2. _ _ _ _ n _ a

clue: a flat grassland habitat

2. _____

3. _ _ _ l o _ s

clue: units for measuring liquid capacity

3. _____

4. _ t _ _ a _ _

clue: organ inside the body for digesting food

4. _____

5. _ _ _ r _ s

clue: sharp points on a plant's stem or branch

5. _____

6. _ u _ c _

clue: to chew something in a noisy way

6. _____

7. _ l _ _ d

clue: liquid that runs through an animal's body
through veins and arteries

7. _____

Multiplication Facts—Skills Practice

Math

Name: _____

Practice facts up to 5×5 .

Form B

1 $5 \times 2 =$ _____

2 $3 \times 4 =$ _____

3 $4 \times 5 =$ _____

4 $2 \times 5 =$ _____

5 $3 \times 3 =$ _____

6 $2 \times 3 =$ _____

7 $5 \times 4 =$ _____

8 $4 \times 3 =$ _____

9 $3 \times 3 =$ _____

10 $2 \times 5 =$ _____

11 $5 \times 3 =$ _____

12 $3 \times 5 =$ _____

13 $2 \times 2 =$ _____

14 $5 \times 4 =$ _____

15 $4 \times 4 =$ _____

16 $1 \times 1 =$ _____

17 $4 \times 3 =$ _____

18 $0 \times 5 =$ _____

19 $4 \times 5 =$ _____

20 $2 \times 3 =$ _____

21 $4 \times 3 =$ _____

22 $2 \times 4 =$ _____

23 $4 \times 2 =$ _____

24 $5 \times 5 =$ _____

25 $5 \times 3 =$ _____

26 $2 \times 2 =$ _____

27 $4 \times 1 =$ _____

28 $3 \times 2 =$ _____

29 $5 \times 5 =$ _____

30 $3 \times 0 =$ _____

31 $3 \times 5 =$ _____

32 $4 \times 2 =$ _____

33 $4 \times 5 =$ _____

34 $5 \times 2 =$ _____

35 $3 \times 2 =$ _____

36 $4 \times 3 =$ _____

37 $4 \times 4 =$ _____

38 $3 \times 5 =$ _____

39 $2 \times 4 =$ _____

40 $4 \times 3 =$ _____

41 $0 \times 0 =$ _____

42 $2 \times 2 =$ _____



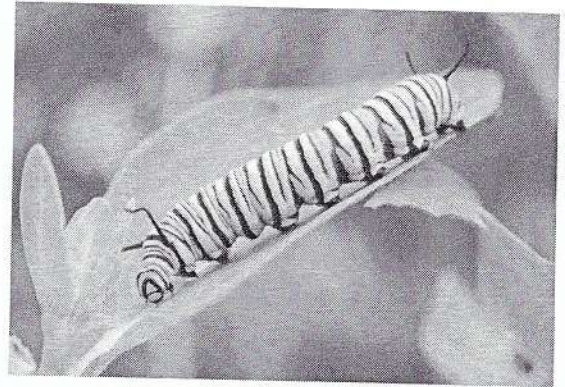
Name: _____

Science

Monarch Butterflies: Beautiful But Poisonous

by Kelly Hashway

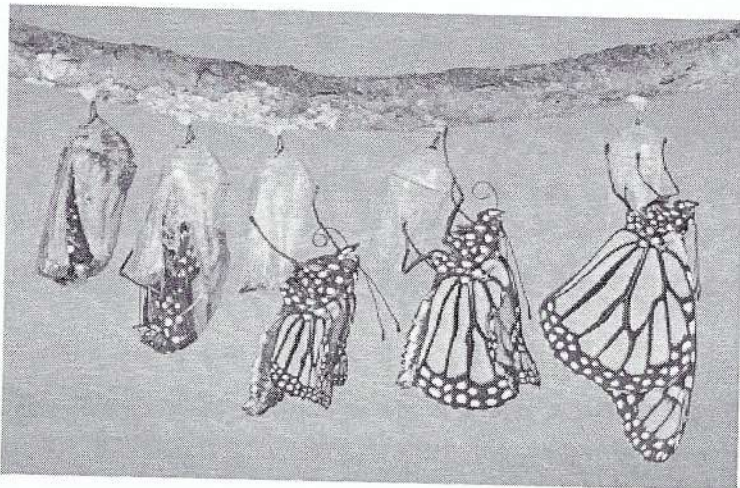
If you've ever seen a monarch butterfly, then you've probably noticed their bright orange and black colors. It makes them easy to see in the sky. You may think this would put the Monarch in harm from predators, but these bright colors are actually what protect the butterfly. Monarchs eat a plant called milkweed, which is why they are sometimes called



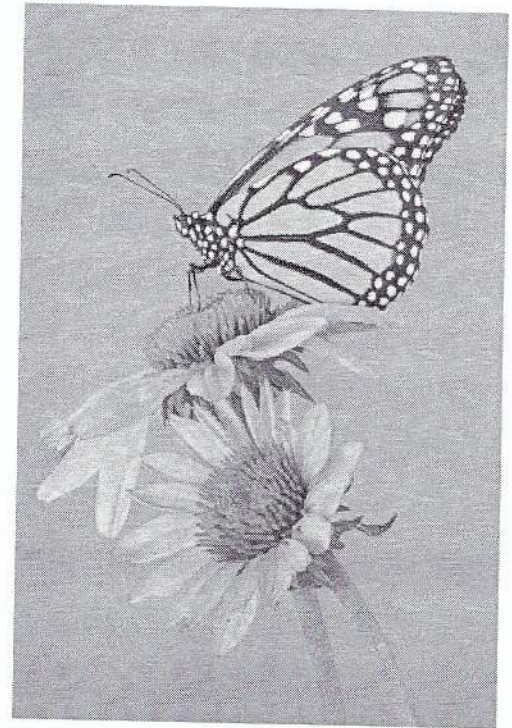
"milkweed butterflies." Milkweed contains toxins that are not poisonous to Monarchs but are poisonous to other living things. These toxins that are a regular part of the Monarch butterfly's diet make them poisonous to predators. A bird flying through the sky will leave the flashy colored Monarch alone because it knows those bright colors mean the Monarch is poisonous.

Monarch butterflies actually begin eating milkweed as larvae. As you probably know, butterflies begin as caterpillars. Monarch butterflies lay eggs on milkweed plants, and when an

egg hatches, the young caterpillar, or larva, begins to eat the milkweed. The caterpillar will eat the plant for about two weeks and grow to approximately two inches long. The caterpillar will then spin a silk pad and attach itself upside-down to a twig or leaf. Next it sheds its yellow, black, and white striped skin. This is the first step in the caterpillar's transformation to a butterfly.



Underneath the old skin of the caterpillar is a hard layer of skin called a chrysalis. The caterpillar will keep this chrysalis, or pupa, around its body and stay inside it for two weeks while it changes into a Monarch butterfly. The chrysalis will become transparent when the butterfly is ready to emerge. The Monarch uses the blood in its body to inflate its wings. Then it will hang in that same spot for hours until its wings dry and it can fly.



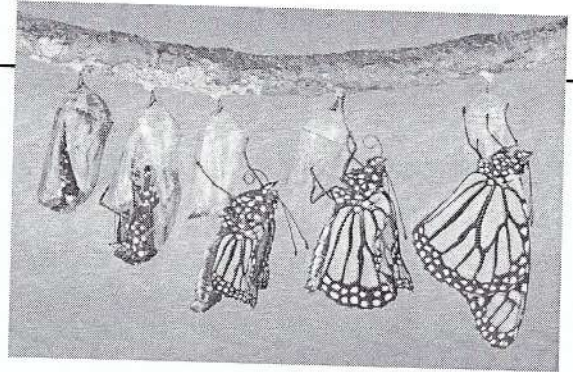
Monarch butterflies can live for very different lengths of time depending on what time of year they emerge from their chrysalis and become adult butterflies. If a Monarch reaches adulthood in early summer, it will most likely live for only two to five weeks. But if the Monarch becomes an adult at the end of the summer months, it will migrate south and live for about eight to nine months.

Monarchs can be found all over the world in tropic and sub-tropic areas. And if you'd like to observe them in your own yard, plant milkweed and wait for the Monarchs to come for a feast.

Name: _____

Monarch Butterflies: Beautiful But Poisonous

by Kelly Hashway



1. What is a butterfly larva called?
 - a. caterpillar
 - b. chrysalis
 - c. pupa
 - d. a Monarch

2. About how long is a Monarch in the larvae stage? _____

3. Which would be the best way to attract Monarch butterflies to your yard?
 - a. place a dish of fruit on the lawn
 - b. plant milkweed in the yard
 - c. cut down large trees
 - d. place a small pool with water in the yard

4. Explain how a Monarch butterfly's bright colors help to protect it from predators.

5. Re-read these sentences from the article.

Next it sheds its yellow, black, and white striped skin. This is the first step in the caterpillar's transformation to a butterfly.

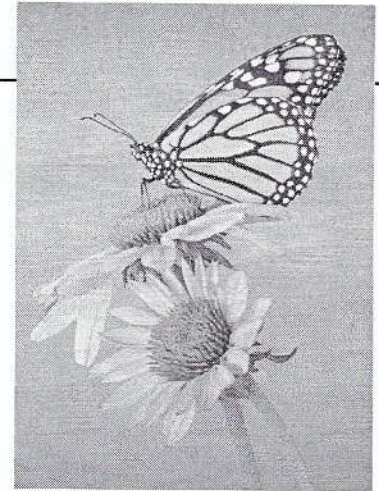
Which is the best definition for the underlined word.

 - a. grow older
 - b. sleep
 - c. remove
 - d. change

Name: _____

Monarch Butterflies: Beautiful But Poisonous

Vocabulary Activity



Fill in the missing letters to create a vocabulary word from the story. Then write the full word on the line. Be sure you spell each word correctly.

1. ____ r y ____ i ____

hint: pupa stage of a butterfly

2. ____ r a n ____ e n ____

hint: see-through; clear

3. ____ n f ____

hint: to fill up

4. ____ i g ____

hint: to move to another place

5. ____ w i ____

hint: small branch

6. ____ e a ____ t

hint: a large meal

7. ____ o ____ i ____ s

hint: poisons

Name: _____

A Special Afternoon

If you could spend the afternoon with any member of your extended family, who would it be? Explain what you would do and why you like to spend time with that person.



Name: _____

Page _____

A Special Afternoon