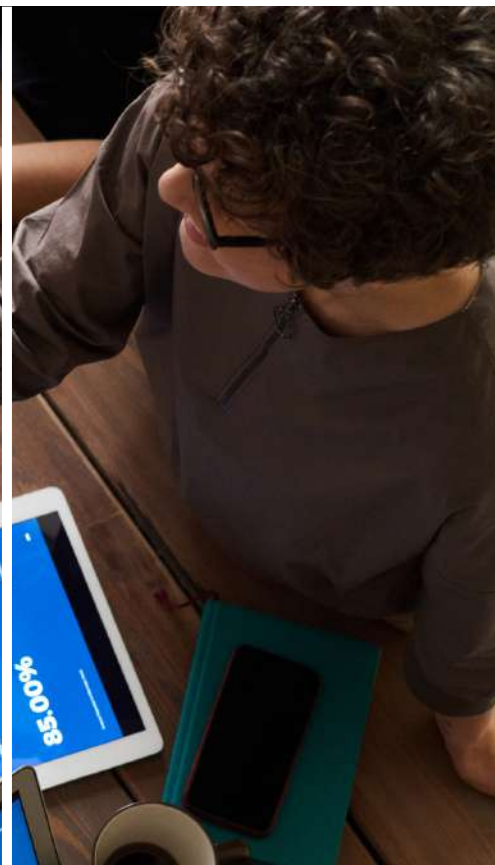
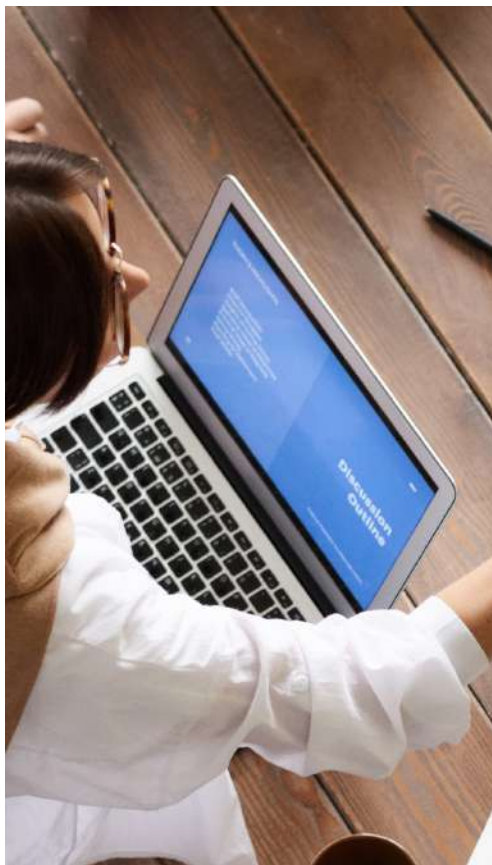


# PROFESSIONAL DEVELOPMENT CATALOG



# WESELPA

2022-2023



---

# CONTENTS

---

**03**

Certificated Staff

**06**

Behavior Support

**07**

Paraeducator Learning  
Opportunities

**08**

Family-Focused  
Learning

**09**

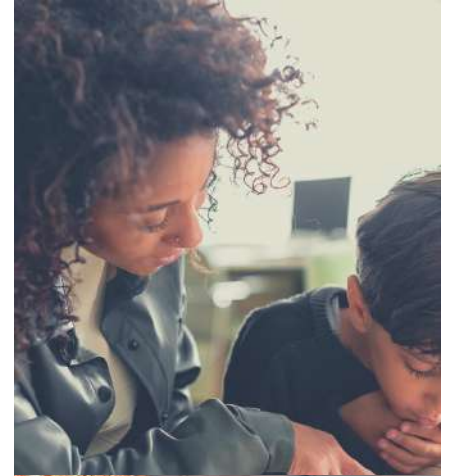
CPI

**10**

The Parent Project

**11**

Contact Information



# PROFESSIONAL LEARNING- CERTIFICATED STAFF



## Evidenced-Based Practices to Support the Learning Environment

Students with moderate / severe needs require specialized support in the learning environment. This training will identify evidence-based practices for supporting students with moderate/ severe disabilities. This training will consider the full range curriculum and instruction for students with moderate/ severe disabilities. Presenters will also offer an opportunity to apply evidence-based practices through a case scenario.



**April 4, 2023**  
**2:30pm-3:30pm**



To Register

[CLICK HERE](#)



Intended Audience: Certificated Staff  
Facilitators: Diana Turner

TEACHING IS A GREAT WAY  
TO KEEP LEARNING

- MATTHEA HARVEY -

## The Grief Cycle

This training will cover the five stages of grief: denial, anger, bargaining, depression and acceptance. We will discuss the stages in terms of what a parent may experience during and after an IEP. Understanding the grief cycle can help us frame and identify what they are feeling and best practices for supporting parents through their grief.



**January 17, 2023**  
**2:30pm-3:30pm**



To Register

[CLICK HERE](#)



Intended Audience: Certificated Staff  
Facilitators: Diana Turner



# PROFESSIONAL LEARNING- CERTIFICATED STAFF



## Individualized Transition Plans ITPs

This training will prepare attendees to develop legally compliant and student-centered Individual Transition Plans. Examples and suggestions for completing the forms will be provided.



**September 6, 2022**  
1:30pm-3:30pm



To Register

[CLICK HERE](#)

Intended Audience: Certificated Staff  
Facilitators: Jeff Fraiser

## Writing the Legally Compliant IEP

This training will focus on the content necessary for an IEP to be legally compliant. The training will cover all the pages of the IEP and provide participants an opportunity to look at the IEP through the lens of Educational Benefit Analysis.



**October 20, 2022**  
12:30pm-3:30pm



To Register

[CLICK HERE](#)



**February 23, 2023**  
12:30pm-3:30pm



To Register

[CLICK HERE](#)

Intended Audience: Certificated Staff  
Facilitators: WESELPA Staff

## Dispute Prevention- Building Relationships with Families

Early intervention and promoting collaboration and positive relationships with families helps to prevent disputes. This training will provide ways to proactively communicate with families, establish collaborative problem solving, and ideas for parent input activities to establish and maintain relationships.



**November 1, 2022**  
2:30pm-3:30pm



To Register

[CLICK HERE](#)

Intended Audience: Certificated Staff  
Facilitators: Julie Macias



# PROFESSIONAL LEARNING- CERTIFICATED STAFF



## Universal Design for Learning- An Overview

This training will provide an overview of Universal Design for Learning. Themes to be discussed under the umbrella of UDL will include:

- Breaking down barriers
- Creating access for all students



**August 23, 2022**  
2:30pm-3:30pm



To Register

[CLICK HERE](#)



Intended Audience: Open to Everyone  
Facilitators: Diana Turner & Julie Macias

## The UDL Brain Networks

This training will provide an in-depth look at the UDL Brain Networks and how to best provide multiple means of engagement, representation, and expression.



**March 9, 2023**  
2:30pm-3:30pm



To Register

[CLICK HERE](#)



Intended Audience: Open to Everyone  
Facilitators: Diana Turner & Julie Macias

## UDL Community of Practice

Please join us for our UDL Community of Practice sessions as we share our passion for UDL and learn how to apply our learning in the classroom. Like all Communities of Practice, we are committed to meeting regularly to engage in joint-activities and discussions, as well as create and share resources that will make us more faithful implementers of UDL.



# UDL



**August 26, 2022**  
**September 23, 2022**  
**October 21, 2022**  
**November 18, 2022**  
**December 2, 2022**

**January 20, 2023**  
**February 10, 2023**  
**March 10, 2023**  
**April 14, 2023**  
**May 19, 2023**



To Register

[CLICK HERE](#)



**3:00pm-4:00pm**

Intended Audience: Open to Everyone  
Facilitators: Open Access Leads

# BEHAVIOR SUPPORT



## Behavior 101

This training is geared toward new teachers, or those interested in learning about applied behavior analysis and evidence-based practices. An overview of the fundamentals of applied behavior analysis, as well as current evidenced based-practices for students with different disabilities will be discussed. Participants will have the opportunity to practice using scenarios and case studies.



**September 13, 2022**  
2:30pm-3:30pm



To Register

[CLICK HERE](#)



**March 7, 2023**  
2:30pm-3:30pm



To Register

[CLICK HERE](#)



Intended Audience: Certificated Staff  
Facilitators: Julie Macias and Diana Turner

*The goal of positive behavior is not "perfect children". Rather the goal should be creating the perfect environment for enhancing their growth.*

*- Randy Sprick*

## Social and Emotional Learning

Social and emotional learning is the process through which children and adults learn the skills they need to recognize and manage their emotions, demonstrate caring and concern for others, form positive relationships, make responsible decisions and handle life's challenges. This training will give an overview of SEL and offer various strategies to implement in the classroom to support students' social and emotional needs.



**November 17, 2022**  
2:30-3:30



To Register

[CLICK HERE](#)



Intended Audience: Anyone  
Facilitators: Diana Turner



# PARAEDUCATOR LEARNING OPPORTUNITIES



## PARAEDUCATOR:

**The heartfelt hero. Using their talents to help students discover their own.**

**Dedicating their time and energy each day to the students in their care, and doing it all while meeting the individual needs of many.**

**-Teresa Kwant**

## *Instructional Practices to Support Student Learning*

This training will provide a variety of instructional practices to support the diverse learning needs of students with disabilities. Participants will be provided with strategies that can be implemented immediately.



**December 6, 2022**  
**2:30pm-3:30pm**



To Register

[CLICK HERE](#)



Intended Audience: Paraeducators  
Facilitators: Julie Macias

## *BIP (Behavior Intervention Plan) 101*

This training will provide an overview of the fundamentals of applied behavior analysis and evidence-based practices as they relate to behavior intervention plans. The behavior intervention plan and its components will also be reviewed thoroughly, with an emphasis on connecting strategies to more socially appropriate behavior in the classroom.



**September 20, 2022**  
**2:30pm-3:30pm**



To Register

[CLICK HERE](#)



Intended Audience: Paraeducators  
Facilitators: Megan Clarry

## *The Role of the Paraeducator*

This professional development will focus on the role of the equitable paraeducator in having common understanding around:

- Diversity, Equity, and Inclusion
- Building positive relationships for each student through authentic learning
- Use of multiple sources of data to identify current inequities



**January 26, 2023**  
**2:30pm-3:30pm**



To Register

[CLICK HERE](#)



Intended Audience: Paraeducators  
Facilitators: WESELPA Staff

# FAMILY-FOCUSED LEARNING



## Understanding the IEP

Parents and guardians of students with disabilities are important members of their child's educational team. This training will provide information on what to expect during an IEP and provide an overview of the components of the IEP, so parents feel confident and knowledgeable about the IEP process.



October 4, 2023  
2:30pm-3:30pm



To Register

[CLICK HERE](#)



## Behavior Practices for the Home

Having trouble handling your child's behavior at home? This training will provide parents with an overview of various behavior principles, including applied behavior analysis, and social and emotional learning. Parents will also be presented with practical strategies based on these behavior principles to implement at home to support socially appropriate behavior, as well as coping skills.



February 14, 2023  
2:30pm-3:30pm



To Register

[CLICK HERE](#)



## The Grief Cycle

When we think of grief, we think of loss. When learning your child has special needs, you may experience the loss of a planned future. These emotions are similar to learning about any of life's losses. This training will cover the five stages of grief: denial, anger, bargaining, depression and acceptance. They are a part of the framework that makes up our learning to live with unexpected challenges, losses, or life-changing news. Understanding the grief cycle can help us frame and identify what we may be feeling and how to move forward.



January 17, 2023  
9:00am-10:00am



To Register

[CLICK HERE](#)





# CRISIS PREVENTION INSTITUTE- CPI



## Crisis Prevention Institute-CPI

CPI is an evidence-based program that focuses on the care, welfare, safety, and security of students and staff. This curriculum provides strategies to prevent escalating behaviors to intervene and de-escalate risk behaviors, and to reduce or eliminate the use of restraints.

During the classroom session, participants will receive the CPI Non-violent Crisis Intervention booklet for on-the-job reference information. Participants will learn and safely practice any applicable physical disengagement and/or hold skills. Participants will be forwarded a CPI card upon passing post-test and completing the participant evaluation on the day of the training.



September 29, 2022  
8:00am-3:00pm



To Register

[CLICK HERE](#)



February 13, 2023  
8:00am-3:00pm



To Register

[CLICK HERE](#)



October 26, 2022  
8:00am-3:00pm

To Register

[CLICK HERE](#)



March 16, 2023  
8:00am-3:00pm

To Register

[CLICK HERE](#)



November 7, 2022  
8:00am-3:00pm



To Register

[CLICK HERE](#)



April 17, 2023  
8:00am-3:00pm



To Register

[CLICK HERE](#)



January 12, 2023  
8:00am-3:00pm

To Register

[CLICK HERE](#)



Intended Audience: Anyone  
Facilitators: WESELPA Staff

# PARENT PROJECT



The Parent Project® is a 7-week workshop\* for parents/guardians designed to address many of the challenges they face including: a strong-willed child, poor school performance, media influence, violence, and more.

## Loving Solutions-Ages 1-10

This training series will focus on assisting caregivers with acquiring the tools to effective parenting for challenging behaviors. Participants will learn strategies for improving their relationship, connecting through clear communication, increasing compliance discipline techniques, and more. Learn how to communicate effectively with your child and stop unwanted behaviors. We will provide Answers for parents of children with ADD/ADHD and special needs and provide strategies to improve school attendance and performance.

[CLICK HERE](#)



October 4, 2022- November 15, 2023  
9:00am-11:00am



October 4, 2022- November 15, 2023  
5:00pm-7:00pm

## Loving Solutions- Ages 5-14

The Parent Project's Loving Solutions utilizes the same principles found successful in Parent Project® Sr., but has been adapted to address the needs of younger children. West End SELPA workshops will include consideration of students with disabilities.



April 4 2023- May 16, 2023  
9:00am-11:00am

[CLICK HERE](#)



## Parent Project Sr. Ages 15-22

At the heart of Parent Project®, Sr., is the Changing Destructive Adolescent Behavior curriculum that focuses on the most challenging behaviors for adolescents. West End SELPA workshops will include consideration of students with disabilities.



April 4 2023- May 16, 2023  
5:00pm-7:00pm

[CLICK HERE](#)





# Contact Us



WEST END  
SELPA

**MAUREEN BLAIR - (909) 476-6160**  
**[maureen.blair@weselpa.net](mailto:maureen.blair@weselpa.net)**