

Welcome Back.

Weld Re-5J SD:
**Planning
Advisory Group**

Work Session #6

4/23/2019



Your Support Team:

RLH engineering, inc.
Facility Planning, Engineering & Environmental Services

RBB
ARCHITECTS





Overarching Initiative:

“Develop a long-term facilities master plan that can be implemented incrementally over time as funding becomes available.”

(Implement Your Vision over Time)

Tonight's Agenda

- 01** Recent BOE Work Session | Thank You!
- 02** RECAP: Planning Process | Roles
- 03** Design Advisory Groups (DAGs)
- 04** Bond Program Master Schedule
- 05** Capital Renewal | Facility Scorecards
- 06** EXAMPLES: Transforming Existing Buildings
- 07** EXAMPLES: Creating New Buildings
- 08** Defining Individual Projects
- 09** NEXT STEPS

01 Recent BOE Work Session | Thank You!

02

03

04

05

06

07

08

09

01

02 RECAP: Planning Process | Roles

03

04

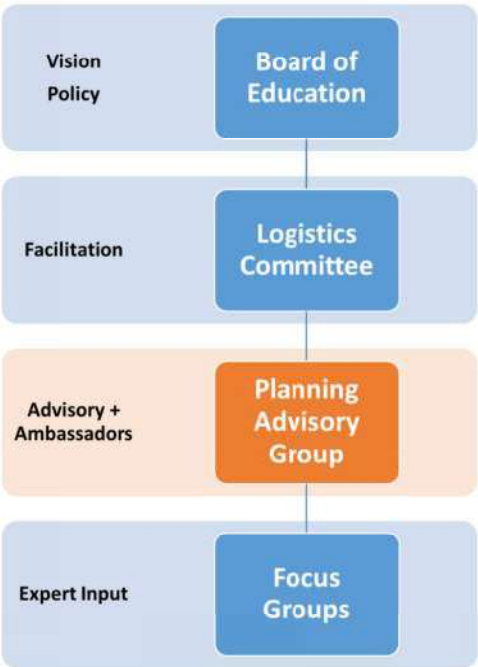
05

06

07

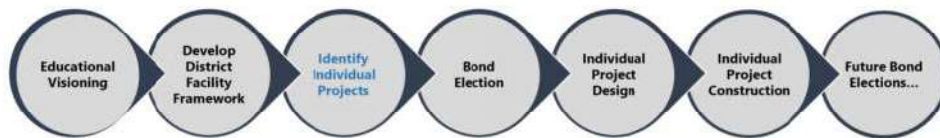
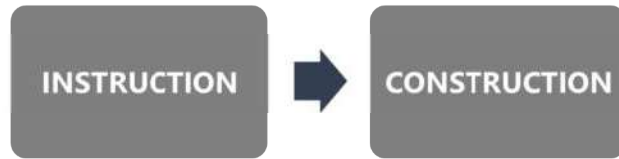
08

09



PAG:
Inform the Vision
Advise the Board
Act as Ambassadors

Initial Phase General Process



Initial Phase General Timeline



01

02

03 Design Advisory Groups (DAGs)

04

05

06

07

08

09

WELD RE-SJ FRAMEWORK NO. 1 (DRAFT)

RB-RB Architects, Inc.
Version 4 (4.17.2019)

EXISTING CONDITION JANUARY 2019	BOND PROGRAM NO. 1 NOVEMBER 2021	BOND PROGRAM NO. 2 NOVEMBER 2026	BOND PROGRAM NO. 3 NOVEMBER 2031
LEIFORD ELEMENTARY SCHOOL Grades PK-5 Teaching Stations: 20 Capacity: 22 x 25 Students = 550	NEW LEIFORD ELEMENTARY SCHOOL Grades PK-5 with 1/2 Day PE + Full Day V Teaching Stations: 28 Capacity: 28 x 25 Students = 700	NEW LEIFORD ELEMENTARY SCHOOL Grades PK-5 with 1/2 Day PE + Full Day V Teaching Stations: 28 Capacity: 28 x 25 Students = 700	NEW LEIFORD ELEMENTARY SCHOOL Grades PK-5 with 1/2 Day PE + Full Day V Teaching Stations: 28 Capacity: 28 x 25 Students = 700
MILBURN ELEMENTARY SCHOOL Grades PK-5 with 1/2 Day PE + V Teaching Stations: 20 Capacity: 22 x 25 Students = 550	NEW MILBURN ELEMENTARY SCHOOL Grades PK-5 with 1/2 Day PE + Full Day V Teaching Stations: 28 Capacity: 28 x 25 Students = 700	NEW MILBURN ELEMENTARY SCHOOL Grades PK-5 with 1/2 Day PE + Full Day V Teaching Stations: 28 Capacity: 28 x 25 Students = 700	NEW MILBURN ELEMENTARY SCHOOL Grades PK-5 with 1/2 Day PE + Full Day V Teaching Stations: 28 Capacity: 28 x 25 Students = 700
PRINER ROSE ELEMENTARY SCHOOL Grades K-5 with 1/2 Day V Teaching Stations: 16 Capacity: 18 x 25 = 450	NEW PRINER ROSE ELEMENTARY SCHOOL Grades K-5 with 1/2 Day V Teaching Stations: 16 Capacity: 18 x 25 = 450	NEW PRINER ROSE ELEMENTARY SCHOOL Grades K-5 with 1/2 Day V Teaching Stations: 16 Capacity: 18 x 25 = 450	NEW PRINER ROSE ELEMENTARY SCHOOL Grades K-5 with 1/2 Day V Teaching Stations: 16 Capacity: 18 x 25 = 450
MILBURN MIDDLE SCHOOL Grades 6-8 Teaching Stations: 10 Capacity: 28 x 25 Students = 700	NEW MILBURN MIDDLE SCHOOL NO. 1 Grades 6-8 Teaching Stations: 10 Capacity: 28 x 25 Students = 700	NEW MILBURN MIDDLE SCHOOL NO. 2 Grades 6-8 Teaching Stations: 10 Capacity: 28 x 25 Students = 700	NEW MILBURN MIDDLE SCHOOL NO. 3 Grades 6-8 Teaching Stations: 10 Capacity: 28 x 25 Students = 700
ROOSEVELT HIGH SCHOOL Grades 9-12 Teaching Stations: 47 Capacity: 47 x 25 Students = 1,175	NEW ROOSEVELT HIGH SCHOOL Grades 9-12 Teaching Stations: 47 Capacity: 47 x 25 Students = 1,175	NEW ROOSEVELT HIGH SCHOOL Grades 9-12 Teaching Stations: 47 Capacity: 47 x 25 Students = 1,175	NEW ROOSEVELT HIGH SCHOOL Grades 9-12 Teaching Stations: 47 Capacity: 47 x 25 Students = 1,175
NEW CENTRAL SOUTH DISTRICT ATHLETIC FACILITY Grades PK-12 Teaching Stations: 20 Capacity: 20 x 25 Students = 500	NEW CENTRAL SOUTH DISTRICT ATHLETIC FACILITY Grades PK-12 Teaching Stations: 20 Capacity: 20 x 25 Students = 500	NEW CENTRAL SOUTH DISTRICT ATHLETIC FACILITY Grades PK-12 Teaching Stations: 20 Capacity: 20 x 25 Students = 500	NEW CENTRAL SOUTH DISTRICT ATHLETIC FACILITY Grades PK-12 Teaching Stations: 20 Capacity: 20 x 25 Students = 500
KNOWLEDGE QUEST ACADEMY Grades K-8 Teaching Stations: 18 Capacity: 18 x 25 Students = 450	NEW KNOWLEDGE QUEST ACADEMY Grades K-8 Teaching Stations: 18 Capacity: 18 x 25 Students = 450	NEW KNOWLEDGE QUEST ACADEMY Grades K-8 Teaching Stations: 18 Capacity: 18 x 25 Students = 450	NEW KNOWLEDGE QUEST ACADEMY Grades K-8 Teaching Stations: 18 Capacity: 18 x 25 Students = 450
NEW DISTRICT CENTRAL TRANSPORTATION FACILITY Grades K-12 Teaching Stations: 1 Capacity: 25 Students (250 Pathways)	NEW DISTRICT CENTRAL TRANSPORTATION FACILITY Grades K-12 Teaching Stations: 1 Capacity: 25 Students (250 Pathways)	NEW DISTRICT CENTRAL TRANSPORTATION FACILITY Grades K-12 Teaching Stations: 1 Capacity: 25 Students (250 Pathways)	NEW DISTRICT CENTRAL TRANSPORTATION FACILITY Grades K-12 Teaching Stations: 1 Capacity: 25 Students (250 Pathways)

Design Advisory Groups (DAGs)

- ✓ **Milliken ES + MS Conversions**
- ✓ **Pioneer Ridge ES Ren. + Add.**
- ✓ **Roosevelt HS Ren. + Add.**
- ✓ **New Letford ES**
- ✓ **New Milliken MS**
- ✓ **New District Transport. Facility**
- ✓ **New District Athletic Facility**

It's time to begin having conversations about MES and MMS conversions. RB+B and RLH to have Work Sessions with Stakeholders from all facilities listed on this slide. Leslie Arnold has started working to get these scheduled – will inform when to take place.

01

02

03

04 Bond Program Master Schedule

05

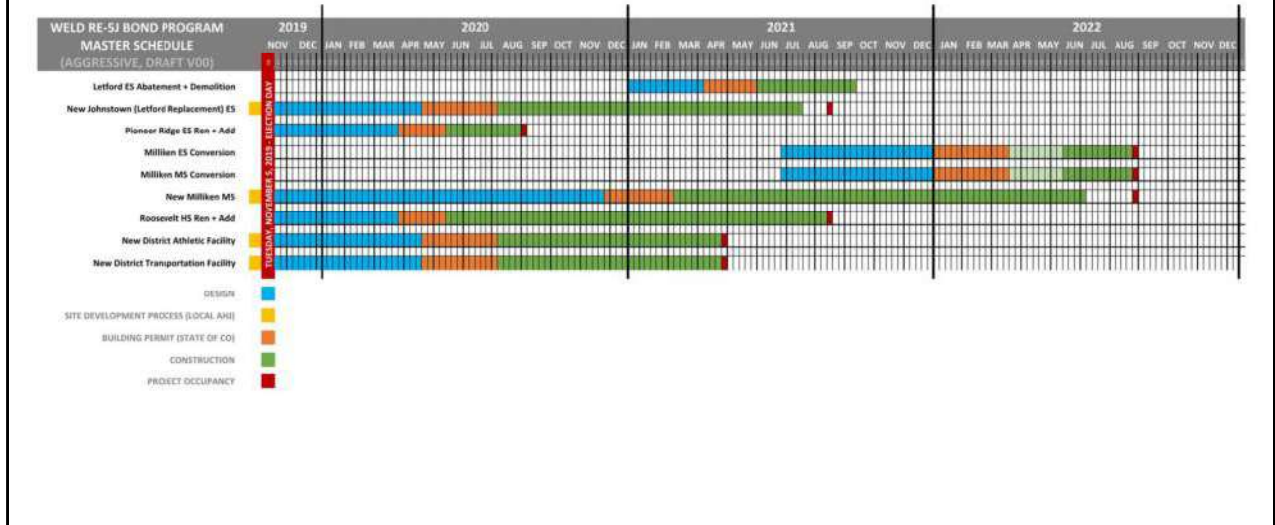
06

07

08

09

RB+B | PRELIMINARY - NOT FOR CIRCULATION | 4.23.2019



Jeff commented – always trying to hit a mid-July occupancy.

Balance the design time to do it right (9 months +/-).

Explained the tight design timeframe with the schedule listed above, but to gain a few weeks for design, it could shift the project by a year.

Questions:

- 1.) What does the light green mean during the school year for conversion projects? If we can get the Contractor(s) started in the Spring with Sub-Contracts, Shop Drawings, etc. construction can efficiently begin in the Summer.
- 2.) Professional Development – teach the teachers how to utilize renovated/new space – doesn't appear to be a lot of time on the schedule. Matt indicated there is time during construction for this activity. Leslie indicated some of this work is actually already under way – Project Based Learning (PBL), Pathways, beginning to be developed and incorporated. Much is expected to emerge from the Design Advisory Groups – as the design work gets under way, there will be greater clarity around the PD that is going to be needed.
- 3.) Jeff spoke to the bond passage – if doesn't pass, need to get community involvement to find out why, make adjustments, and re-group.

01

02

03

04

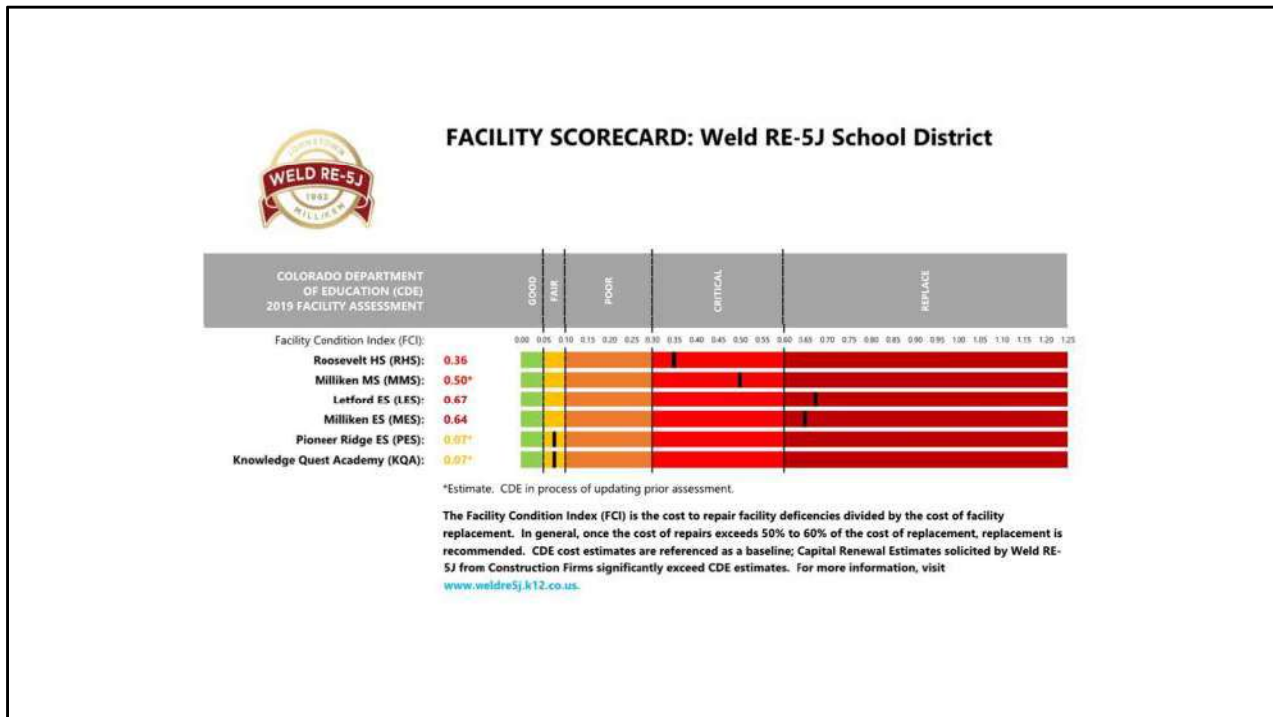
05 Capital Renewal | Facility Scorecards

06

07

08

09



FCI only addresses deferred maintenance, is not an indication of educational suitability - whether or not the building is supporting the curriculum model. The Design Advisory Groups (DAGs) are where we will get input to help prioritize deferred maintenance needs, as needs always exceed funding.

Questions:

MES – Why isn't it being replaced? Matt indicated Letford represents a more dire situation, and the District has limited resources – doesn't have the capacity to replace both buildings immediately.

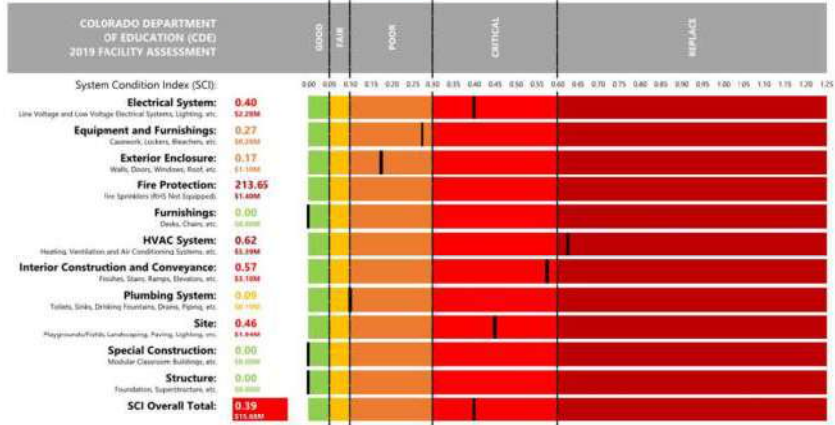
BEST Grant – If it's approved, is there a time constraint for breaking ground? No, within reason. If the District is awarded a BEST Grant, and the voters do not approve a Bond Issue, the District would not have the means to provide matching funds, and the Best funds would go "back into the State's pot" (the funds would be awarded to one of the "runner up" or "alternate" BEST Grant projects).



FACILITY SCORECARD: Roosevelt High School

0.39 SCI | CRITICAL
NEEDS: \$15,676,187.00

Age: Constructed in 1967 with Additions in 1997, 2004, and 2007
Modular Classrooms: Four
Current Enrollment: 989 Students (February 6, 2019)
Program Capacity: 1,118 Students (Including Modular Classrooms)



The System Condition Index (SCI) is the cost to repair system deficiencies divided by the cost of system replacement. In general, once the cost of repairs exceeds 50% to 60% of the cost of replacement, replacement is recommended. CDE cost estimates are referenced as a baseline; Capital Renewal Estimates solicited by Weld RE-SJ from Construction Firms significantly exceed CDE estimates. For more information, visit www.weldresj.k12.co.us.



FACILITY SCORECARD: Milliken Middle School

0.50 SCI* | CRITICAL*

NEEDS: \$9,500,000.00*

Age: Constructed in 1967 with Additions in 1984, 1996, and 2004
Modular Classrooms: -
Current Enrollment: 765 Students (February 6, 2019)
Program Capacity: 926 Students



*Estimate. CDE in process of updating prior assessment.



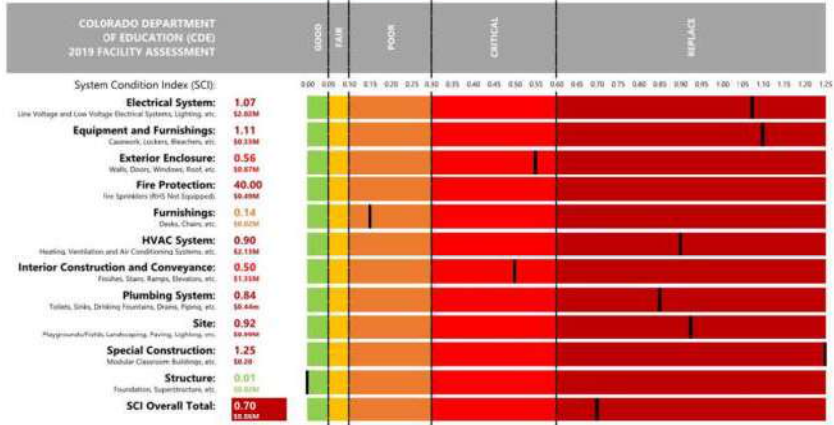
The System Condition Index (SCI) is the cost to repair system deficiencies divided by the cost of system replacement. In general, once the cost of repairs exceeds 50% to 60% of the cost of replacement, replacement is recommended. CDE cost estimates are referenced as a baseline; Capital Renewal Estimates solicited by Weld RE-SJ from Construction Firms significantly exceed CDE estimates. For more information, visit www.weldresj.k12.co.us.



FACILITY SCORECARD: Letford Elementary School

0.70 SCI | REPLACE
NEEDS: \$8,859,515.00

Age: Constructed in 1957 with Additions in 1976, 1984, and 1996
Modular Classrooms: Four
Current Enrollment: 504 Students (February 6, 2019)
Program Capacity: 624 Students (Not Including Modular Classrooms)



The System Condition Index (SCI) is the cost to repair system deficiencies divided by the cost of system replacement. In general, once the cost of repairs exceeds 50% to 60% of the cost of replacement, replacement is recommended. CDE cost estimates are referenced as a baseline; Capital Renewal Estimates solicited by Weld RE-SJ from Construction Firms significantly exceed CDE estimates. For more information, visit www.weldresj.k12.co.us.



FACILITY SCORECARD: Milliken Elementary School

0.68 SCI | REPLACE
NEEDS: \$9,300,573.00

Age: Constructed in 1972 with Additions in 1984 and 1996
Modular Classrooms: -
Current Enrollment: 614 Students (February 6, 2019)
Program Capacity: 676 Students



The System Condition Index (SCI) is the cost to repair system deficiencies divided by the cost of system replacement. In general, once the cost of repairs exceeds 50% to 60% of the cost of replacement, replacement is recommended. CDE cost estimates are referenced as a baseline; Capital Renewal Estimates solicited by Weld RE-SJ from Construction Firms significantly exceed CDE estimates. For more information, visit www.weldresj.k12.co.us.



FACILITY SCORECARD: Pioneer Ridge Elem. School

0.07 SCI* | FAIR*

NEEDS: \$1,500,000.00*

Age: Constructed in 2004 with Addition in 2014
 Modular Classrooms: -
 Current Enrollment: 663 Students (February 6, 2019)
 Program Capacity: 728 Students



*Estimate. CDE in process of updating prior assessment.



The System Condition Index (SCI) is the cost to repair system deficiencies divided by the cost of system replacement. In general, once the cost of repairs exceeds 50% to 60% of the cost of replacement, replacement is recommended. CDE cost estimates are referenced as a baseline; Capital Renewal Estimates solicited by Weld RE-SJ from Construction Firms significantly exceed CDE estimates. For more information, visit www.weldresj.k12.co.us.



FACILITY SCORECARD: Knowledge Quest Academy

0.07 SCI* | FAIR*

NEEDS: \$1,000,000.00*

Age: -
 Modular Classrooms: -
 Current Enrollment: -
 Program Capacity: -



*Estimate. CDE in process of updating prior assessment.



The System Condition Index (SCI) is the cost to repair system deficiencies divided by the cost of system replacement. In general, once the cost of repairs exceeds 50% to 60% of the cost of replacement, replacement is recommended. CDE cost estimates are referenced as a baseline; Capital Renewal Estimates solicited by Weld RE-SJ from Construction Firms significantly exceed CDE estimates. For more information, visit www.weldresj.k12.co.us.

01

02

03

04

05

06 EXAMPLES: Transforming Existing Buildings

07

08

09





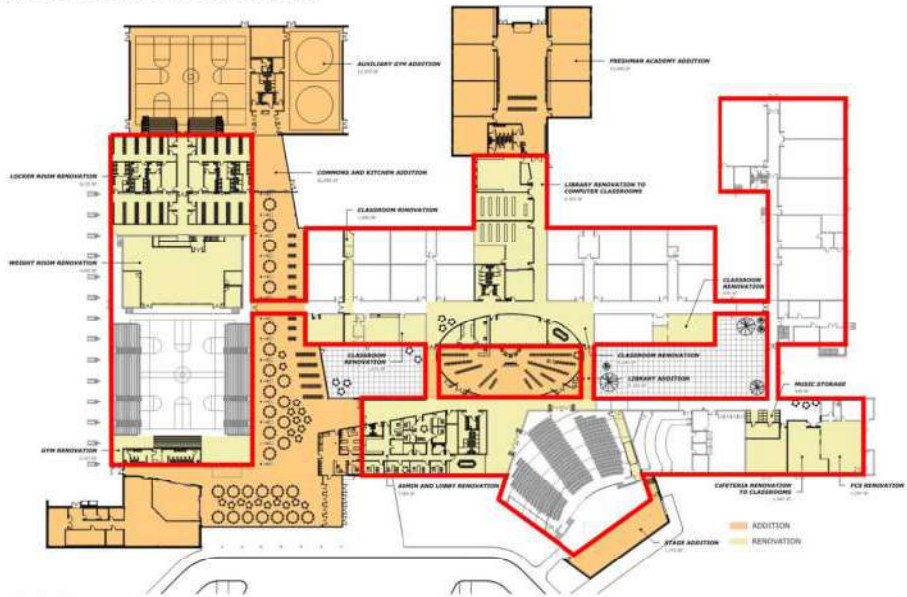








RENOVATION AND ADDITION PLAN



RBB ARCHITECTS





















01

02

03

04

05

06

07 EXAMPLES: Creating New Buildings

08

09



SECOND FLOOR



FIRST FLOOR

RBB ARCHITECTS | EMERALD ELEMENTARY SCHOOL



















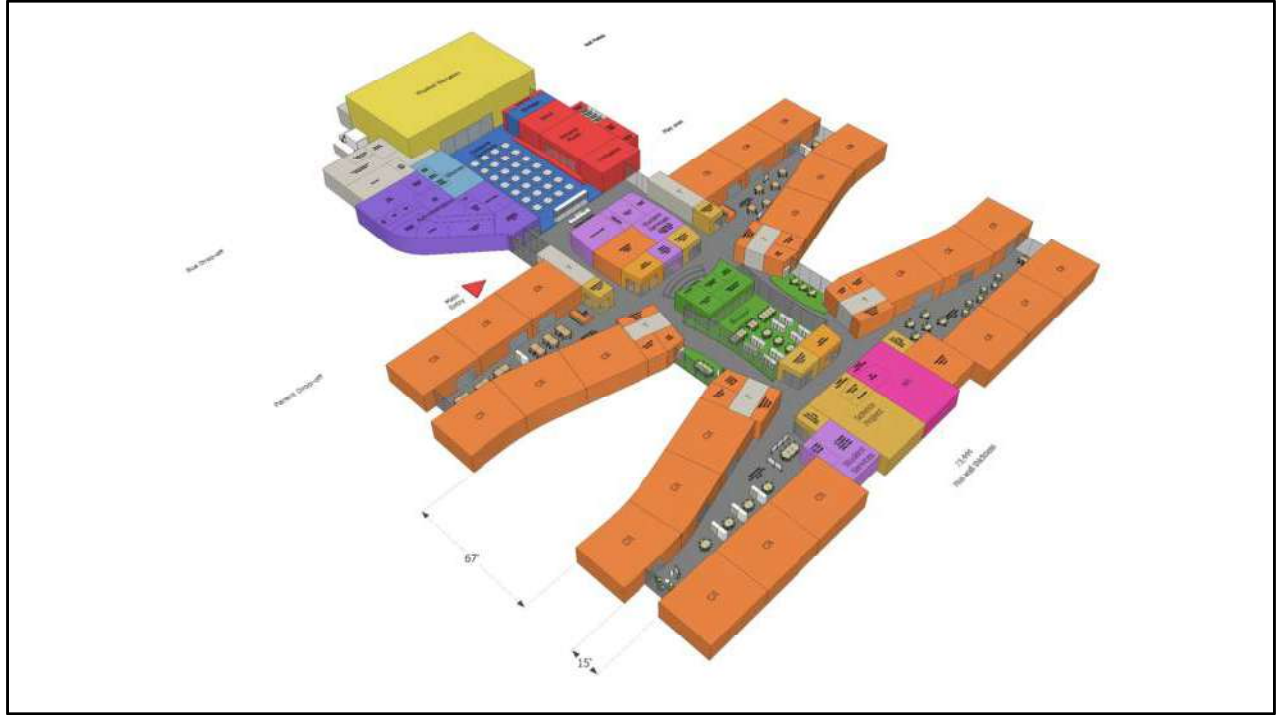


























01

02

03

04

05

06

07

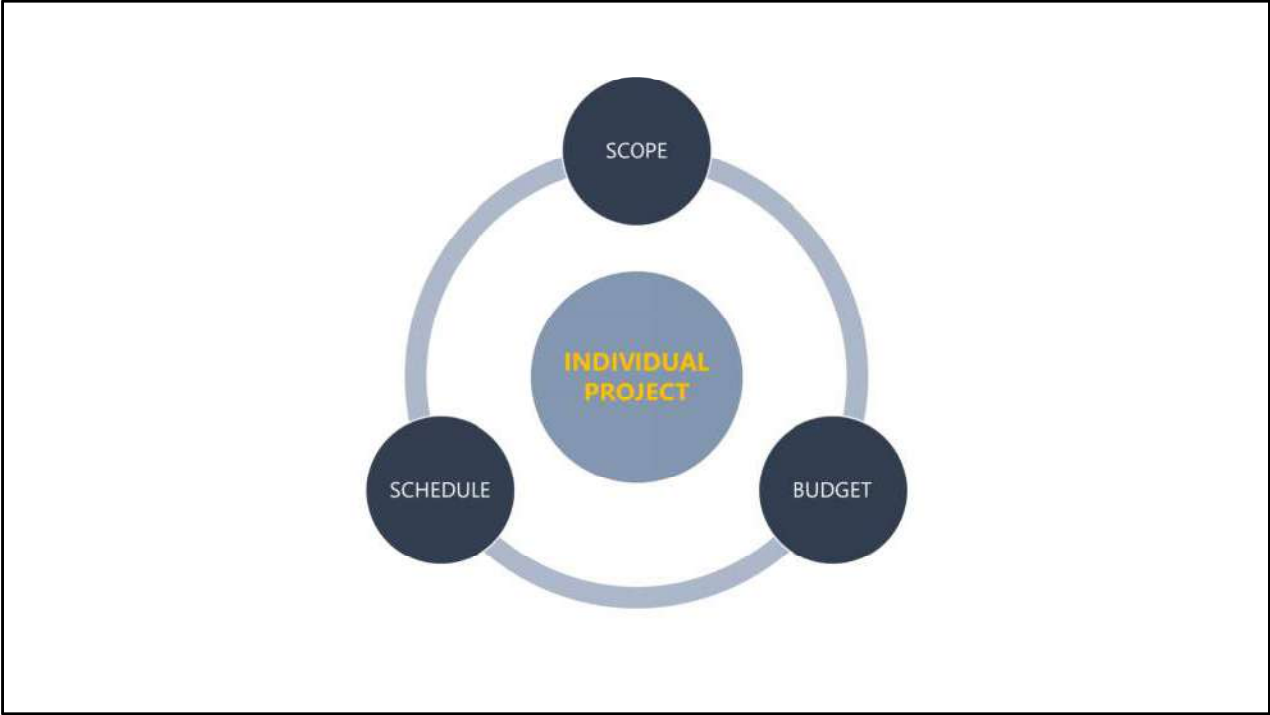
08 Defining Individual Projects

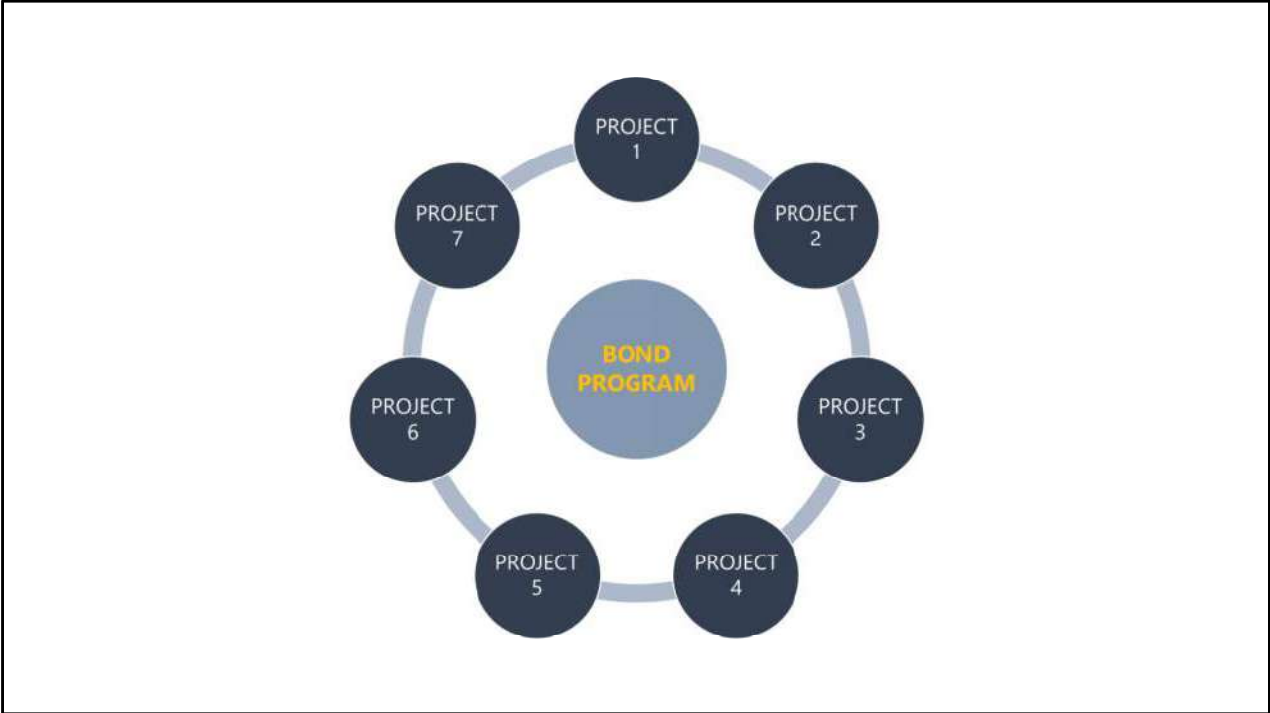
09

WELD RE-SJ FRAMEWORK NO. 1 (DRAFT)

RB-RB Architects, Inc.
Version 4 (4.17.2019)

EXISTING CONDITION JANUARY 2019	BOND PROGRAM NO. 1 NOVEMBER 2021	BOND PROGRAM NO. 2 NOVEMBER 2025	BOND PROGRAM NO. 3 NOVEMBER 2027
<p>UTPOND ELEMENTARY SCHOOLS Students: 176 (with 122 Day PE + 4 PE) Teaching Stations: 27 Capacity: 22 x 25 Students = 550</p>	<p>UTPOND ELEMENTARY SCHOOLS Students: 176 (with 122 Day PE + 4 PE) Teaching Stations: 27 Capacity: 22 x 25 Students = 550</p>	<p>UTPOND ELEMENTARY SCHOOLS Students: 176 (with 122 Day PE + 4 PE) Teaching Stations: 27 Capacity: 22 x 25 Students = 550</p>	<p>UTPOND ELEMENTARY SCHOOLS Students: 176 (with 122 Day PE + 4 PE) Teaching Stations: 27 Capacity: 22 x 25 Students = 550</p>
<p>MILBURN ELEMENTARY SCHOOLS Students: 176 (with 122 Day PE + 4 PE) Teaching Stations: 27 Capacity: 22 x 25 Students = 550</p>	<p>MILBURN ELEMENTARY SCHOOLS Students: 176 (with 122 Day PE + 4 PE) Teaching Stations: 27 Capacity: 22 x 25 Students = 550</p>	<p>MILBURN ELEMENTARY SCHOOLS Students: 176 (with 122 Day PE + 4 PE) Teaching Stations: 27 Capacity: 22 x 25 Students = 550</p>	<p>MILBURN ELEMENTARY SCHOOLS Students: 176 (with 122 Day PE + 4 PE) Teaching Stations: 27 Capacity: 22 x 25 Students = 550</p>
<p>PRINCE ROSE ELEMENTARY SCHOOLS Students: 176 (with 122 Day PE + 4 PE) Teaching Stations: 27 Capacity: 22 x 25 Students = 550</p>	<p>PRINCE ROSE ELEMENTARY SCHOOLS Students: 176 (with 122 Day PE + 4 PE) Teaching Stations: 27 Capacity: 22 x 25 Students = 550</p>	<p>PRINCE ROSE ELEMENTARY SCHOOLS Students: 176 (with 122 Day PE + 4 PE) Teaching Stations: 27 Capacity: 22 x 25 Students = 550</p>	<p>PRINCE ROSE ELEMENTARY SCHOOLS Students: 176 (with 122 Day PE + 4 PE) Teaching Stations: 27 Capacity: 22 x 25 Students = 550</p>
<p>MILBURN MIDDLE SCHOOLS Students: 176 (with 122 Day PE + 4 PE) Teaching Stations: 27 Capacity: 22 x 25 Students = 550</p>	<p>MILBURN MIDDLE SCHOOLS Students: 176 (with 122 Day PE + 4 PE) Teaching Stations: 27 Capacity: 22 x 25 Students = 550</p>	<p>MILBURN MIDDLE SCHOOLS Students: 176 (with 122 Day PE + 4 PE) Teaching Stations: 27 Capacity: 22 x 25 Students = 550</p>	<p>MILBURN MIDDLE SCHOOLS Students: 176 (with 122 Day PE + 4 PE) Teaching Stations: 27 Capacity: 22 x 25 Students = 550</p>
<p>ROOSEVELT HIGH SCHOOLS Students: 176 (with 122 Day PE + 4 PE) Teaching Stations: 27 Capacity: 22 x 25 Students = 550</p>	<p>ROOSEVELT HIGH SCHOOLS Students: 176 (with 122 Day PE + 4 PE) Teaching Stations: 27 Capacity: 22 x 25 Students = 550</p>	<p>ROOSEVELT HIGH SCHOOLS Students: 176 (with 122 Day PE + 4 PE) Teaching Stations: 27 Capacity: 22 x 25 Students = 550</p>	<p>ROOSEVELT HIGH SCHOOLS Students: 176 (with 122 Day PE + 4 PE) Teaching Stations: 27 Capacity: 22 x 25 Students = 550</p>
<p>KNOWLEDGE QUEST ACADEMY Students: 176 (with 122 Day PE + 4 PE) Teaching Stations: 27 Capacity: 22 x 25 Students = 550</p>	<p>KNOWLEDGE QUEST ACADEMY Students: 176 (with 122 Day PE + 4 PE) Teaching Stations: 27 Capacity: 22 x 25 Students = 550</p>	<p>KNOWLEDGE QUEST ACADEMY Students: 176 (with 122 Day PE + 4 PE) Teaching Stations: 27 Capacity: 22 x 25 Students = 550</p>	<p>KNOWLEDGE QUEST ACADEMY Students: 176 (with 122 Day PE + 4 PE) Teaching Stations: 27 Capacity: 22 x 25 Students = 550</p>
<p>NEW DISTRICT CENTRAL TRANSPORTATION FACILITY Students: 176 (with 122 Day PE + 4 PE) Teaching Stations: 27 Capacity: 22 x 25 Students = 550</p>	<p>NEW DISTRICT CENTRAL TRANSPORTATION FACILITY Students: 176 (with 122 Day PE + 4 PE) Teaching Stations: 27 Capacity: 22 x 25 Students = 550</p>	<p>NEW DISTRICT CENTRAL TRANSPORTATION FACILITY Students: 176 (with 122 Day PE + 4 PE) Teaching Stations: 27 Capacity: 22 x 25 Students = 550</p>	<p>NEW DISTRICT CENTRAL TRANSPORTATION FACILITY Students: 176 (with 122 Day PE + 4 PE) Teaching Stations: 27 Capacity: 22 x 25 Students = 550</p>





PRE-BOND PLANNING GOAL

**Clearly articulate our BOND PROGRAM
for the VOTING PUBLIC with enough
SPECIFICITY to SECURE APPROVAL.**

MILLIKEN ES+MS CONVERSIONS

SCOPE

- Capital Renewal
- Program Conversions
- MODULARS BEING CONSIDERED: 1 @ MES, 2 @ MMS
- GRANT (TENTATIVE): New Roof @ MES
- GRANT (TENTATIVE): New Playground @ MES
- GRANT: Security @ MMS

SCHEDULE

- 6 Mos. Design
- 4 Mos. Construction

BUDGET

- \$7.90M @ MES
- \$9.40M @ MMS

**PIONEER RIDGE ES
REN. + ADD.**

SCOPE

- Mitigate Water Intrusion
- Re-Purpose "Kivas"?
- Expand Core Areas?
- MODULARS BEING CONSIDERED: 1

SCHEDULE

- 4 Mos. Design
- 6 Mos. Construction

BUDGET

- \$0.06M Capital Renewal
- \$1.00M Addition(s)

**ROOSEVELT HS
REN. + ADD.**

SCOPE

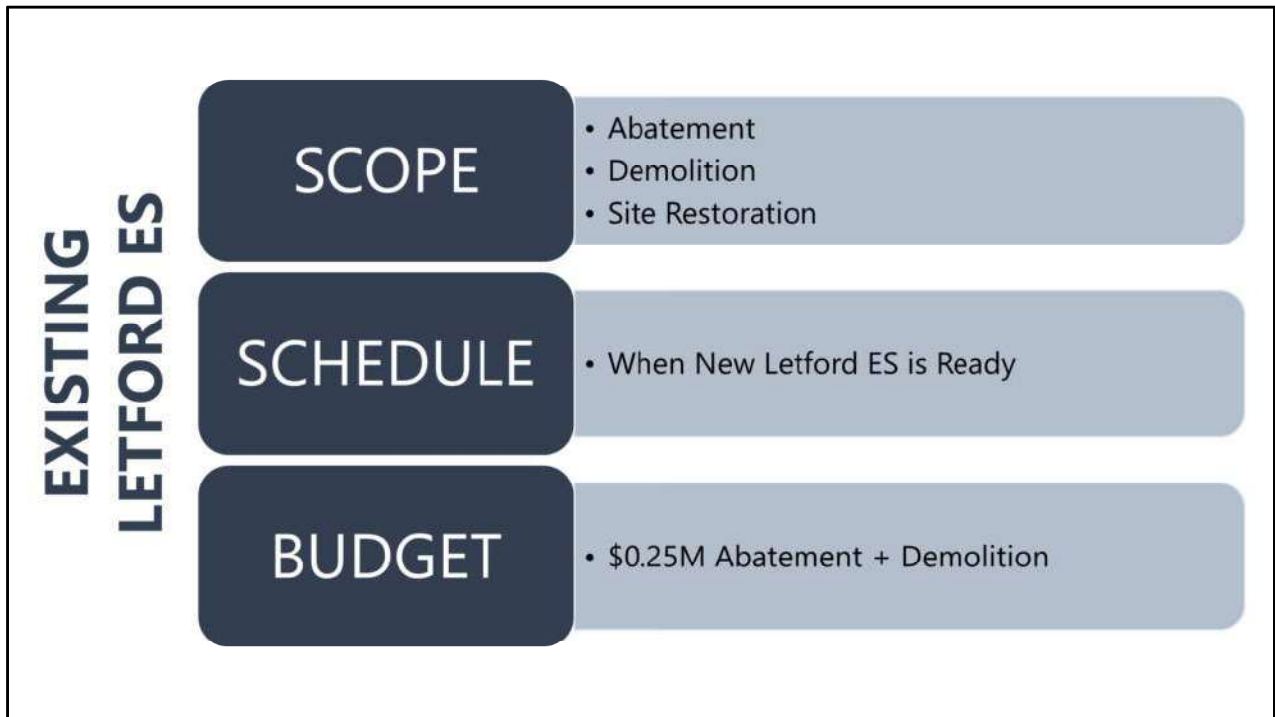
- Capital Renewal
- Expand Program Offerings
- Additional Capacity
- GRANT: Security

SCHEDULE

- 8 Mos. Design
- 16 Mos. Construction

BUDGET

- \$12.80M Capital Renewal
- \$7.20M Addition(s)



As of right now, the land the existing Letford ES is on would be returned to Johnstown and utilized as a public park.

**NEW
LETFORD ES**

SCOPE

- New Building
- New Site
- GRANT (TENTATIVE): Matching BEST Grant

SCHEDULE

- 12 Mos. Design
- 12 Mos. Construction

BUDGET

- \$33.75M New

Program for RE-5J New PK-5 ES, V-2B, Enhanced Condition

RB+B Architects, Inc.

700
114
80,000

Number of Students*
Square Feet per Student (Based on No. of Students)**
Gross Building Square Footage Target

*Program Capacity
**According to School Planning and Management's 2008 Annual School Construction Report (2014), National Median for ES is 188.0 SF/Student with Low Quartile being 149.4 SF/Student and High Quartile being 208.5 SF/Student.

1.00 Core Academics	Total Net SF	12,691	Teaching Stations	41	Capacity	478
2.00 Art	Total Net SF	1,450	Teaching Stations	1	Capacity	25
3.00 Music	Total Net SF	1,400	Teaching Stations	1	Capacity	25
4.00 Physical Education	Total Net SF	5,820	Teaching Stations	1	Capacity	25
5.00 Science	Total Net SF	0	Teaching Stations	0	Capacity	0
6.00 Learning Commons	Total Net SF	5,500	Teaching Stations	0	Capacity	0
7.00 Dining Commons	Total Net SF	4,315	Teaching Stations	0	Capacity	0
8.00 Administration	Total Net SF	2,590	Teaching Stations	0	Capacity	0
9.00 Building Support	Total Net SF	3,320	Teaching Stations	0	Capacity	0

Program Sub-Totals

Total Net SF	31,606	Teaching Stations	44	Capacity	773
--------------	--------	-------------------	----	----------	-----

Square Feet Remaining for Circulation and Wall Thickness:
 SF Remaining as Percentage of Gross SF (Target: 21%)

11,406 (36%)	11,406 (36%)
--------------	--------------

Total Gross Square Feet: 80,000

Utilization (Target: 81%) 26,300 (33%)

Program Capacity: 700 Students

Program for RE-5J New PK-5 ES, V-2B, Enhanced Condition

RB+B Architects, Inc.

1.00 Core Academics	No. of Rooms	Room Net SF	Total Net SF	Teaching Stations	Students Per TS	Capacity	Comments
---------------------	--------------	-------------	--------------	-------------------	-----------------	----------	----------

Accommodates Pre-Kindergarten through Fifth Grade.

A Typical Core Academics

Pre-K Studios	3	1000	3000	3	15	45	1/2 Day AM + PM Program
Pre-K Unisex lockers	3	75	225				
Pre-K Storage Alcove/Storage	1	50	50				
Pre-K Shared Storage	1	100	100				
Pre-K Shared Exterior Storage	1	100	100				
Kindergarten Studios	5	1000	5000	5	20	100	Full Day Program
Kindergarten Unisex lockers	5	75	375				
Kindergarten Shared Storage	1	200	200				
Kindergarten Shared Exterior Storage	1	200	200				
Pre-K + K Director's Office	1	120	120				
Pre-K + K Teacher Collaboration	1	250	250				
Pre-K + K Staff Unisex lockers	1	75	75				
1-5 Grade Station	20	850	17000	20	25	500	
1-5 Grade Full-Day / Intervention	4	200	800				
1-5 Grade Shared Storage	4	100	400				
1-5 Grade Teacher Collaboration	4	250	1000				
1-5 Grade Staff Unisex lockers	4	75	300				

Sub-Totals for Typical Classrooms

29720	38	648
-------	----	-----

B Special Education (SPED)

SPED Self-Contained/Moderate / Severe	1	850	850	1	10	10	
SPED In-Classroom	1	75	75				
SPED Unisex lockers	1	75	75				
SPED Storage	1	100	100				
English as Second Language (ESL)	1	600	600	1	10	10	
Behavior Studies	1	600	600	1	10	10	
Therapy (PT / OT / Speech / Vision)	1	300	300				
IEP Conferences/Meeting	1	185	185				
Special Education Teacher Collaboration	1	250	250				

Sub-Totals for Special Education

3090	1	30
------	---	----

C Outdoor Classroom

Outdoor Classroom (Interior)	1	1200					
Outdoor Classroom (Storage (Exterior))	1	100					

Sub-Totals for Outdoor Classroom

1300	1	10
------	---	----

Core Academics Totals	32885	31	678
------------------------------	--------------	-----------	------------

These programming sheets will help aid in the DAG discussions. An "Architectural Program of Spaces" is akin to a list of ingredients, defining the spaces and their size to be included in the proposed facility design.

Program for RE-5J New PK-5 ES, V-2B, Enhanced Condition

RB+B Architects, Inc.

2.00 Art	No. of Rooms	Space Net SF	Total Net SF	Teaching Stations	Students Per TS	Capacity	Comments
Accommodates Visual Arts.							
A Visual Arts							
2.0 + 3.0 Art Applied Learning Lab	1	1200	1200	1	25	25	
2.0 + 3.0 Art K12 Room	1	100	100				
2.0 + 3.0 Art Storage: Student Projects	1	100	100				
2.0 + 3.0 Art Storage: Supplies	1	200	200				
2.0 + 3.0 Art Gallery / Display Area	1	50	50				
Sub-Totals for Visual Arts:		1650	1		25		
Art Totals:		1650	1		25		

Program for RE-5J New PK-5 ES, V-2B, Enhanced Condition

RB+B Architects, Inc.

3.00 Music	No. of Rooms	Space Net SF	Total Net SF	Teaching Stations	Students Per TS	Capacity	Comments
Accommodates Vocal and Instrumental Music.							
A V + I Music							
V + I Music Applied Learning Lab*	1	1200	1200	1	25	25	
V + I Music Storage	1	200	200				
Sub-Totals for V + I Music		1400	1		25		
Music Totals		1400	1		25		

*Music Applied Learning Lab shall double as a Performance Platform by opening to the Dining Commons of the Main Gym.

Program for RE-5J New PK-5 ES, V-2B, Enhanced Condition

RB+B Architects, Inc.

4.00 Physical Education	No. of Rooms	Space Net SF	Total Net SF	Teaching Stations	Students Per TS	Capacity	Comments
Accommodates Physical Education and Athletics.							
A Physical Education							
Main Gym (Over 500 sq ft Full Size BB Court)	1	9200	9200	1	25	25	
PE Office	1	130	130				
PE Storage Locker**	1	250	250				
PE Storage Locker**	1	250	250				
Sub-Totals for Physical Education		9830	9830	1		25	
Physical Education Totals		9830	9830	1		25	

**May be combined into one space with direct interior and direct exterior access.

Program for RE-5J New PK-5 ES, V-2B, Enhanced Condition

RB+B Architects, Inc.

5.00 Science	No. of Rooms	Space Net SF	Total Net SF	Teaching Stations	Students Per TS	Capacity	Comments
Accommodates Science.							
A Science							
Science Applied Learning Lab	0	0	0	0	25	0	
Science Classroom/Woodwork Assembly	0	0	0	0			
Science Storage	0	0	0	0			
Science Gallery/Display Area	0	0	0	0			
Sub-Totals for Science		0	0	0		0	
Science Totals		0	0	0		0	

Program for RE-5J New PK-5 ES, V-2B, Enhanced Condition

RB+B Architects, Inc.

6.00 Learning Commons	No. of Spaces	Space Net SF	Total Net SF	Teaching Stations	Students Per TS	Capacity	Comments
-----------------------	---------------	--------------	--------------	-------------------	-----------------	----------	----------

Accommodates Learning Commons (Concentration/Quiet) and Maker Space (Hands-On/Noise)

A Learning Commons (Concentration/Quiet)

Seating / Chairs	1	2500	2500				
Supports	1	500	500				
Learning Lab	1	850	850				

Sub-Totals for Learning Commons		3850	0			0	
---------------------------------	--	------	---	--	--	---	--

B Maker Space (Hands-On/Noise)

Maker Space	1	1300	1300				
Maker Space Storage: Student Projects	1	200	200				
Maker Space Storage: Supplies	1	300	200				
Maker Space Gallery / Display Area	1	50	50				

Sub-Totals for Maker Space		1850	0			0	
----------------------------	--	------	---	--	--	---	--

Learning Commons Totals		5700	0			0	
--------------------------------	--	-------------	----------	--	--	----------	--

Program for RE-5J New PK-5 ES, V-2B, Enhanced Condition

RB+B Architects, Inc.

7.00 Dining Commons	No. of Spaces	Space Net SF	Total Net SF	Teaching Stations	Students Per TS	Capacity	Comments
---------------------	---------------	--------------	--------------	-------------------	-----------------	----------	----------

Accommodates Student Dining, Student "Before and After" Programs, Staff Dining, Production Kitchen, and Production Kitchen Support

A Dining Commons

Commons: Student Dining	1	2500	2500				
Commons: "Before and After" Office	1	120	120				
Commons: Tables and Other Storage	1	100	100				
Commons: Table and Chair Storage	1	250	250				
Kitchen: Seating	1	600	100				
Kitchen: Preparation	1	800	800				
Kitchen: Ware Washing	1	200	200				
Kitchen: Dry Food Storage	1	300	200				
Kitchen: Walk-In Cooler	2	100	100				
Kitchen: Walk-In Freezer	1	100	100				
Kitchen: Office	1	120	120				
Kitchen: Kitchen Staff Personal Items	1	120	120				
Kitchen: Linens Staff Toilet	1	75	75				
Kitchen: Custodial Closet	2	50	50				
Staff Dining: Dining Area	0	0	0				Occurs in Collaboration
Staff Dining: Private Phone Room	0	50	0				Occurs in Collaboration
Staff Dining: Mother's Room	0	75	0				Occurs in Administration
Staff Dining: Unisex Staff Toilet	0	75	0				Occurs in Administration

Sub-Totals for Dining Commons		4735	0			0	
-------------------------------	--	------	---	--	--	---	--

Dining Commons Totals		4735	0			0	
------------------------------	--	-------------	----------	--	--	----------	--

Program for RE-5J New PK-5 ES, V-2B, Enhanced Condition

RB+B Architects, Inc.

8.00 Administration	No. of Spaces	Space Net SF	Total Net SF	Teaching Stations	Students Per TS	Capacity	Comments
Accommodates Administration, Counseling, and Health Clinic.							
A Administration*							
Reception (Receptionist)	1	75	75				
Secretary (Workstation)	1	75	75				
Waiting	1	150	150				
Office - Principal	1	250	250				
Office - Assistant Principal	1	120	120				
Conference - Small	1	150	150				
Conference - Large	1	800	800				
Meal Room	1	200	200				
Stark Room	1	100	100				
Mother's Room	1	75	75				
Unisex Staff Toilet	2	75	250				
Sub-Totals for Administration			2845	0		0	
B Counseling*							
Counseling Suite	1	250	250				
Community Engagement Support	1	250	250				
Sub-Totals for Counseling			500	0		0	
C Health Clinic*							
Treatment Area	1	250	250				
March Office	1	120	120				
Health Clinic Unisex Toilet	1	75	75				
Sub-Totals for Health Clinic			445	0		0	
Administration Totals			3790	0		0	

*Administration and Counseling shall be separate Suites. Health Clinic shall occur within Administration Suite.

Program for RE-5J New PK-5 ES, V-2B, Enhanced Condition

RB+B Architects, Inc.

9.00 Building Support	No. of Spaces	Space Net SF	Total Net SF	Teaching Stations	Students Per TS	Capacity	Comments
Accommodates Restroom Groups, Custodial Support Spaces, Infrastructure Support Spaces, and Vertical Circulation.							
A Restroom Groups							
Student Restroom Groups	8	500	1500				
Family Restroom (Assembly Occupancy)	1	75	75				Code Requirement
Unisex Staff Toilet	0	75	0				Occurs in Core Academics
Sub-Totals for Restroom Groups			1575	0		0	
B Custodial Support							
Restroom/Workroom	1	200	200				
Central Building/Supply Storage	1	250	250				
Sanitary Custodial Rooms	4	75	300				
Custodial Office	1	120	120				
Outdoor Maintenance Equipment Box	1	250	250				
Sub-Totals for Custodial Support			1120	0		0	
C Infrastructure Support							
Data - Main Data Frame (MDF)	1	150	150				
Data - Intermediate Data Frame (IDF)	1	100	100				
Electrical - Primary	1	200	200				
Electrical - Secondary	1	100	100				
Fire Sprinkler Head Pipes	1	100	100				
Boiler Room	1	500	500				
Sub-Totals for Infrastructure Support			1150	0		0	
D Vertical Circulation							
Elevator (3 Triplex)	1	75	75				
Sub-Totals for Vertical Circulation			75	0		0	
Building Support Totals			3920	0		0	



Example Fit Study. This parcel is on the verge of being acquired by the District. Attorneys are finalizing an Agreement. Hwy 60 is just north of this site.

**NEW
MILLIKEN MS**

SCOPE

- New Building
- New Site

SCHEDULE

- 12 Mos. Design
- 18 Mos. Construction

BUDGET

- \$54.00M New

Program for RE-5J New 6-8 MS, V-00

RB+B Architects, Inc.

900
133
125,000

Number of Students*
Square Feet per Student (Based on No. of Students)**
Gross Building Square Footage Target

*Program Capacity
**According to School Planning and Management's 2008 Annual School Construction Report (2014), National Median for MS is 171.4 SF/Student with Low Quartile being 147.4 SF/Student and High Quartile being 193.4 SF/Student

1.00 Core Academics	Total Net SF	14,513	Teaching Stations	84	Capacity	915
2.00 Science	Total Net SF	6,460	Teaching Stations	6	Capacity	150
3.00 Fine Arts	Total Net SF	7,570	Teaching Stations	5	Capacity	125
4.00 CTE	Total Net SF	9,150	Teaching Stations	4	Capacity	100
5.00 Physical Education	Total Net SF	22,500	Teaching Stations	4	Capacity	100
6.00 Learning Commons	Total Net SF	4,150	Teaching Stations	0	Capacity	0
7.00 Dining Commons	Total Net SF	6,065	Teaching Stations	0	Capacity	0
8.00 Administration	Total Net SF	4,725	Teaching Stations	0	Capacity	0
9.00 Building Support	Total Net SF	3,620	Teaching Stations	0	Capacity	0

Program Sub-Totals

Total Net SF: 11,915 Teaching Stations: 91 Capacity: 1,010

Square Feet Remaining for Circulation and Wall Thickness:
If Remaining as Percentage of Gross SF (Target: 21%)

18,200 (Unallocated Value)
18,200 (Unallocated Value)

Total Gross Square Feet: 125,000

Utilization (Target: 81%) 21.32% (Unallocated Value)

Program Capacity: 900 Students

Program for RE-5J New 6-8 MS, V-00

RB+B Architects, Inc.

1.00 Core Academics	No. of Stations	Sq. Ft.	Capacity	Teaching Stations	Capacity	Comments
Academics (Sixth through Eighth Grade)						
A Sixth Grade Core						
Small Group 1 Student Station	1	600	600			
Medium Group 1 Student Station	4	2,400	2,400	4	24	100
Large Group 1 Student Station	1	1,200	1,200	1	12	50
Classroom	1	1,200	1,200			
Student Activity Room	1	100	100			
Student Resource Room	1	100	100			
Classroom Office	1	75	75			
Staff Collaboration 1 (Workroom)	1	100	100			
Staff Storage	1	75	75			
Student Storage	1	100	100			
Sub-Totals for Sixth Grade Core	12	6,075	6,075	4	36	150
B Seventh Grade Core						
Small Group 1 Student Station	1	600	600			
Medium Group 1 Student Station	4	2,400	2,400	4	24	100
Large Group 1 Student Station	1	1,200	1,200	1	12	50
Classroom	1	1,200	1,200			
Student Activity Room	1	100	100			
Student Resource Room	1	100	100			
Classroom Office	1	75	75			
Staff Collaboration 1 (Workroom)	1	100	100			
Staff Storage	1	75	75			
Student Storage	1	100	100			
Sub-Totals for Seventh Grade Core	12	6,075	6,075	4	36	150
C Eighth Grade Core						
Small Group 1 Student Station	1	600	600			
Medium Group 1 Student Station	4	2,400	2,400	4	24	100
Large Group 1 Student Station	1	1,200	1,200	1	12	50
Classroom	1	1,200	1,200			
Student Activity Room	1	100	100			
Student Resource Room	1	100	100			
Classroom Office	1	75	75			
Staff Collaboration 1 (Workroom)	1	100	100			
Staff Storage	1	75	75			
Student Storage	1	100	100			
Sub-Totals for Eighth Grade Core	12	6,075	6,075	4	36	150
D Special Education (SPED)						
SPED Self-Contained Student 1 Station	1	600	600	1	12	50
SPED Resource Library	1	75	75			
SPED Activity Room	1	100	100			
SPED Student Activity Room	1	100	100			
SPED Student Resource Room	1	100	100			
SPED Classroom Office	1	75	75			
SPED Staff Collaboration 1 (Workroom)	1	100	100			
SPED Staff Storage	1	75	75			
SPED Student Storage	1	100	100			
Sub-Totals for Special Education (SPED)	10	1,025	1,025	1	12	50
E Building Reserves						
Student Storage Reserve	1	100	100			
Student Resource Storage Reserve	1	100	100			
Sub-Totals for Building Reserves	2	200	200	0	0	0
Core Academics Totals	44	24,075	24,075	19	180	750

Program for RE-5J New 6-8 MS, V-00

RB+B Architects, Inc.

2.00 Science	No. of Rooms	Space Net SF	Total Net SF	Teaching Stations	Students Per TS	Capacity	Comments
Accommodates Science.							
A Science							
Science Applied Learning Lab	0	0000	0000	0	25	150	
Science Greenhouse Window Assembly	1	50	50				
Science Preparation / Storage	1	600	300				
Science Gallery / Display Area	1	50	25				
Sub-Totals for Science:			6400	0		150	
Science Totals			6400	0		150	

Program for RE-5J New 6-8 MS, V-00

RB+B Architects, Inc.

3.00 Fine Arts	No. of Rooms	Space Net SF	Total Net SF	Teaching Stations	Students Per TS	Capacity	Comments
Accommodates Visual Arts and Performing Arts.							
A Visual Arts							
Visual Arts Applied Learning Lab	1	1200	1200	1	25	25	
Visual Arts Office	1	130	130				
Visual Arts Kit Room	1	100	100				
Visual Arts Material Storage	1	300	200				
Visual Arts Project Storage	1	100	100				
Visual Arts Gallery / Display Area	1	50	50				
Sub-Totals for Visual Arts:			1870	1		25	
B Performing Arts							
Visual Applied Learning Lab	1	1200	1200	1	25	25	
Visual Equipment Storage	1	100	100				
Band Applied Learning Lab	1	1500	1500	1	25	25	
Band Instrument Storage	1	100	100				
Orchestra Applied Learning Lab	1	1200	1200	1	25	25	
Orchestra Instrument Storage	1	100	100				
Shared Instrumental Practice Rooms	2	100	200				
Shared Recording Studio	1	100	100				
Shared Shared Music Library	1	100	100				
Drama Applied Learning Lab*	1	1200	1200	1	25	25	
Drama Changing	2	60	100				
Staff Collaboration	1	300	300				
Sub-Totals for Performing Arts:			8200	0		120	
Fine Arts Totals			7870	0		125	

*Drama Applied Learning Lab shall double as a Performance Platform by opening to the Dining Commons or to the Main Gym.

Program for RE-5J New 6-8 MS, V-00

RB+B Architects, Inc.

4.00 CTE	No. of Rooms	Space Net SF	Total Net SF	Teaching Stations	Students Per TS	Capacity	Comments
----------	--------------	--------------	--------------	-------------------	-----------------	----------	----------

Accommodates Career and Technical Education (CTE).

A CTE

CTE Applied Learning Lab 1 <i>Business</i>	1	1500	1500	1	25	25	Medium-Flow Lab
Material Storage	1	100	100				
Project Storage	1	100	100				
CTE Applied Learning Lab 2 <i>Technology</i>	1	1500	1500	1	25	25	Medium-Flow Lab
Material Storage	1	100	100				
Project Storage	1	100	100				
CTE Applied Learning Lab 3 <i>Fabrication</i>	1	2000	2000	1	25	25	Large-Flow Lab
Material Storage	1	100	100				
Project Storage	1	100	100				
CTE Applied Learning Lab 4 <i>Culinary Arts</i>	1	2000	2000	1	25	25	Large-Flow Lab
Material Storage	1	100	100				
Project Storage	1	100	100				
Staff Collaboration	1	300	300				
CTE Gallery / Display Area	1	50	50				

Sub-Totals for CTE		8150	4	100			
CTE Totals		8150	4	100			

Program for RE-5J New 6-8 MS, V-00

RB+B Architects, Inc.

5.00 Physical Education	No. of Rooms	Space Net SF	Total Net SF	Teaching Stations	Students Per TS	Capacity	Comments
-------------------------	--------------	--------------	--------------	-------------------	-----------------	----------	----------

Accommodates Physical Education and Athletics.

A Physical Education

PE Classroom	1	900	900	1	25	25	
PE Studio (Mounting, Fitness, Weight)	1	1800	1800	1	25	25	
Main Gym (Zone 20 x 94 88 Court)	1	1500	1500	1	25	25	
Main Gym Storage*	1	750	750				
Auxiliary Gym (One 30 x 94 88 Court)	1	3000	3000	1	25	25	
Auxiliary Gym Storage*	1	250	250				
Men's Locker Room with Restrooms	1	800	800				
Women's Locker Room with Restrooms	1	800	800				
Men's Coach/Office with Restroom	1	300	300				
Women's Coach/Office with Restroom	1	300	300				
Exterior PE Storage*	1	250	250				

Sub-Totals for Physical Education		2250	4	100			
Physical Education Totals		2250	4	100			

*May be combined into one space with direct interior and direct exterior access.

Program for RE-5J New 6-8 MS, V-00

RB+B Architects, Inc.

6.00 Learning Commons	No. of Rooms	Space Net SF	Total Net SF	Teaching Stations	Students Per TS	Capacity	Comments
Accommodates Learning Commons.							
A Learning Commons							
Seating Tables	1	2500	2500				
Learning Commons Supports	1	500	500				
One-to-One Technology Support	1	250	250				
Learning Commons Lab	1	900	900				
Sub-Totals for Learning Commons						4150	0
Learning Commons Totals						4150	0

Program for RE-5J New 6-8 MS, V-00

RB+B Architects, Inc.

7.00 Dining Commons	No. of Rooms	Space Net SF	Total Net SF	Teaching Stations	Students Per TS	Capacity	Comments
Accommodates Student Dining, Staff Dining, Production Kitchens, Production Kitchen Supports, and Special After-Hours Event Support.							
A Dining Commons							
Commons Student Dining	1	3000	3000				
Commons PTO Kitchenette	1	200	200				
Commons Table and Chair Storage	1	250	250				
Kitchen Seating	1	100	100				
Kitchen Preparation	1	1000	1000				
Kitchen Warm Washing	1	200	200				
Kitchen Dry Food Storage	1	100	100				
Kitchen Walk-in Cooler	1	100	100				
Kitchen Walk-in Freezer	1	100	100				
Kitchen Office	1	120	120				
Kitchen Kitchen Staff Personal Items	1	120	120				
Kitchen Linear Staff Table	1	75	75				
Kitchen Custodial Closet	1	50	50				
Staff Dining Storage Area	1	500	500				
Staff Dining Private Phone Room	1	50	50				
Sub-Totals for Dining Commons						6065	0
Dining Commons Totals						6065	0

Program for RE-5J New 6-8 MS, V-00

RB+B Architects, Inc.

8.00 Administration	No. of Spaces	Space Net SF	Total Net SF	Teaching Stations	Students per TS	Capacity	Comments
Accommodates Administration, Counseling, and Health Clinic							
A Administration*							
Receptionist (Workstation)	1	75	75				
Administrative Assistant (Workstation)	2	75	150				
Waiting	1	150	150				
Office Principal	1	250	250				
Office Assistant Principal	1	150	150				
Office Building Director	1	120	120				
Office Administrative Manager	1	120	120				
Office SRG / Campus Supervisor	1	120	120				
Sub-Totals for Administration		1105	0			0	
B Counseling*							
Waiting	1	150	150				
In-School Supervisors	1	500	500				
Office Registrar	1	120	120				
Office Counselor	1	150	150				
Office Psychologist	1	120	120				
Office Social Worker	1	120	120				
Sub-Totals for Counseling		1110	0			0	
C Administration + Counseling Shared							
Community Engagement / Support	1	250	250				
Conference - Small	1	150	150				
Conference - Large	1	500	500				
Work Rooms	1	500	500				
Staff Mailboxes	1	100	100				
Archival Records	1	150	150				
Office Supply Storage	1	250	250				
Mother's Room	1	75	75				
Unisex Staff Toilet	2	75	150				
Sub-Totals for Shared		3225	0			0	
D Health Clinic*							
Nurse's Office	1	120	120				
Treatment Area	1	250	250				
Recovery / Drop Area	1	120	120				
Health Clinic Unisex Toilet	1	75	75				
Sub-Totals for Health Clinic		565	0			0	
Administration Totals		4225	0			0	

*Administration, Counseling, and Health Clinic shall be separate areas within a single suite.

Program for RE-5J New 6-8 MS, V-00

RB+B Architects, Inc.

9.00 Building Support	No. of Spaces	Space Net SF	Total Net SF	Teaching Stations	Students per TS	Capacity	Comments
Accommodates Restroom Groups, Custodial Support Spaces, Infrastructure Support Spaces, and Vertical Circulation.							
A Restroom Groups							
Student Restroom Groups	2	500	1000				Additional to Core Academics
Family Restroom (Assembly Occupancy)	1	75	75				Code Requirement
Unisex Staff Toilet	0	75	0				Occupies Core Academics
Sub-Totals for Restroom Groups		1075	0			0	
B Custodial Support							
Restroom/Workroom	1	200	200				
Central Building/Supply Storage	1	250	250				
Sanitary Custodial Rooms	4	75	300				Additional to Core Academics
Custodial Office	1	120	120				
Outdoor Maintenance Equipment Box	1	250	250				
Sub-Totals for Custodial Support		1120	0			0	
C Infrastructure Support							
Data - Main Data Frame (MDF)	1	150	150				
Data - Intermediate Data Frame (IDF)	2	100	200				
Electrical - Primary	1	200	200				
Electrical - Submittal	2	100	200				
Fire Sprinkler Head Pipes	1	100	100				
Boiler Room	1	500	500				
Sub-Totals for Infrastructure Support		1550	0			0	
D Vertical Circulation							
Elevator (3 Travel)	1	75	75				
Sub-Totals for Vertical Circulation		75	0			0	
Building Support Totals		3620	0			0	



Example Fit Study. MS Site: existing site is 6 acres – very limiting for MS programs. Need to expand on why renovations aren't occurring to keep current MS as a MS. Site is West of Centennial Farms. Fit study for transportation facility is shown on the west.

**EXISTING KNOWLEDGE
QUEST ACADEMY**

SCOPE

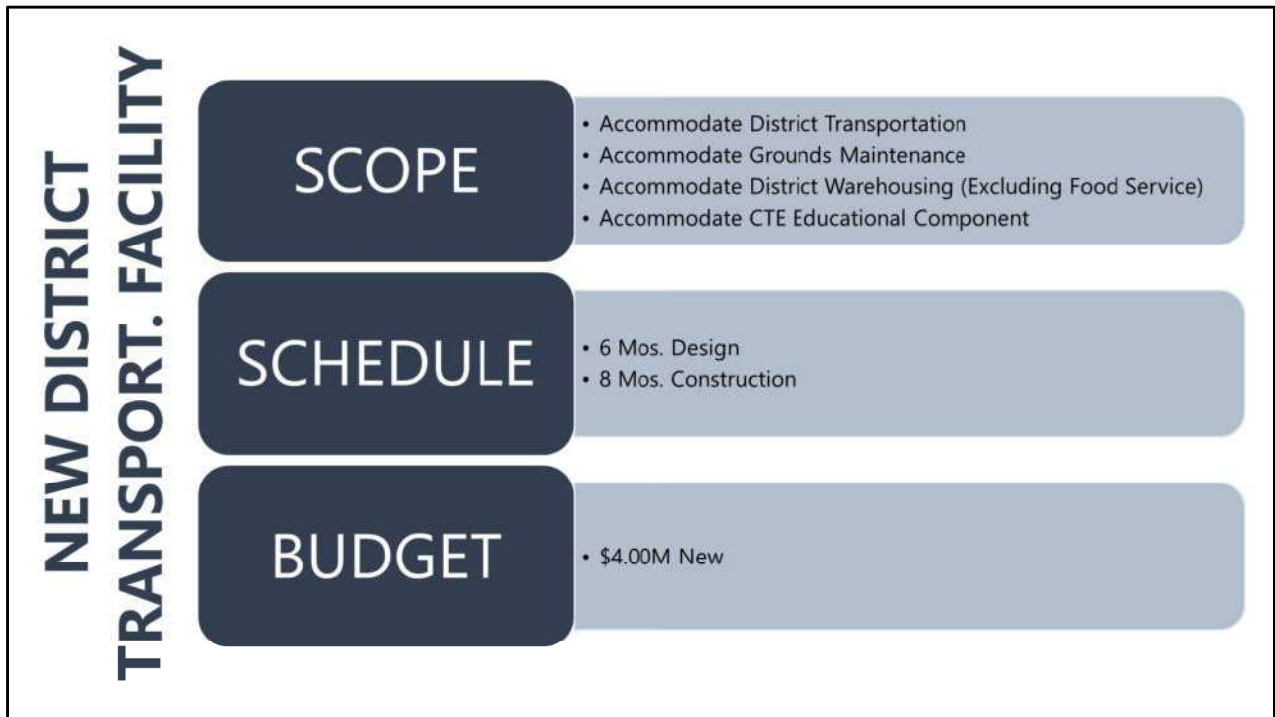
• TBD by KQA

SCHEDULE

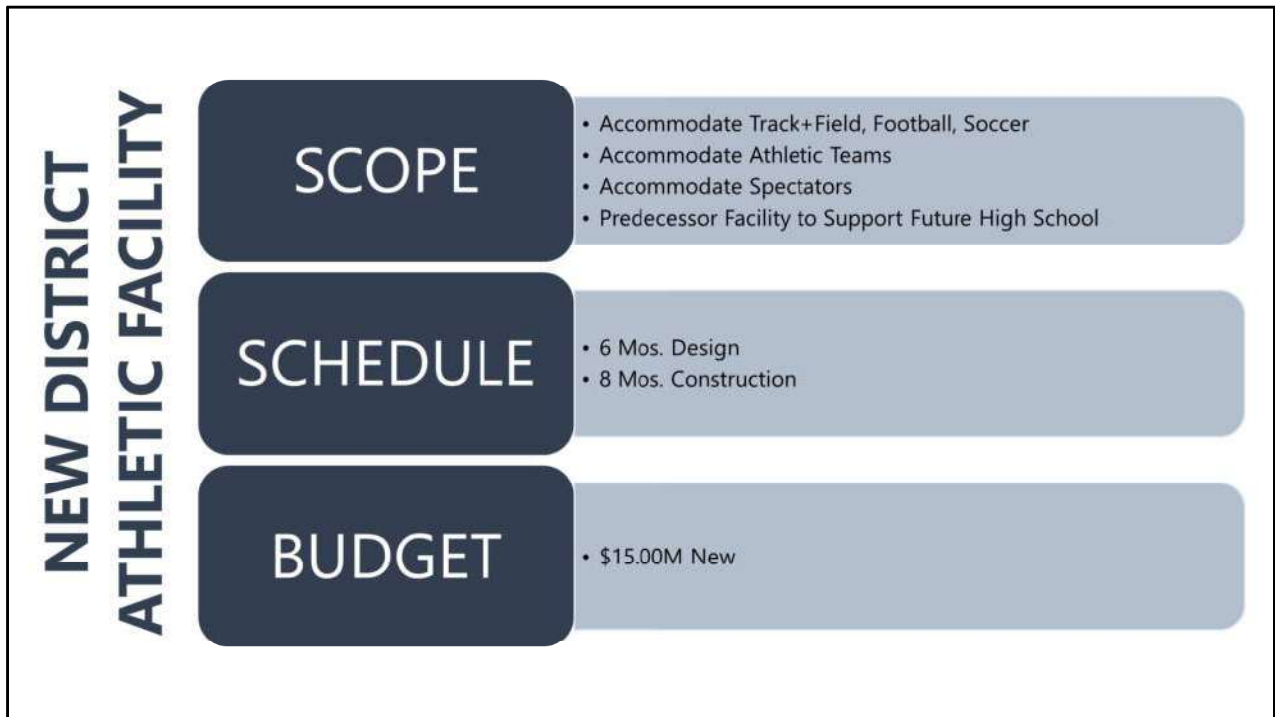
• TBD by KQA

BUDGET

• \$1.00M Capital Renewal



Jeff indicated current transportation facility needs to be removed from the Roosevelt site for many reasons, the most important of which is to improve student safety.



This gives the District an opportunity to secure a future high school site now in an appropriate location, as the cost of land is only increasing, and its availability, particularly in an appropriate location and of an appropriate acreage, is only declining.

01

02

03

04

05

06

07

08

09 NEXT STEPS

Next Steps:

**Schedule | Conduct
Design Advisory Group
Work Sessions**



Survey went out, 300 Responses already in the first 3 hours of being posted.

A mailer will be mailed to every registered voter, and will have a QR Code directing folks to the electronic survey.

Re-cap of current responses: As of now, most responses are 1 and 2 (1 is most positive on scale), very few 3s, less 4s and 5s (5 is most negative on scale).

- K-8 is not looking favorable.
- 60% support for Letford Replacement.
- 70% support for MMS Replacement.
- Expanding HS CTE, 90% support.
- Capital Improvements, Safety and Security, 85% support.
- Athletic Facility, 80% support.
- Mill Levy, support over 70% (for \$4/mo. tax increase).
- Open comments:
 - Leslie will formulate responses to the open comments by creating “Frequently Asked Questions” on the District website.
- Homestead Exemption – tax exemption for some seniors – Jeff pointed out to bring up when taking the survey to the Senior Center.

DAG – Waited until testing was over. Would like to have meetings before 5/21. Would like broad involvement from parents, staff, students – get it advertised.

Next Steps:

Next Meeting

Tuesday, May 7 21

5:30 PM – 7:00 PM

Weld RE-5J HQ, East Training Room



Thank You.

Point of Contact:
Matt Arabasz
marabasz@rbbarchitects.com

