

DOTHAN CITY SCHOOL REPORT CARD 2018-2019



The Alabama Department of Education released the Alabama State Report Card on October 18, 2019, containing a letter grade for schools and school-systems across the state. The report card provides parents and community members with an additional snapshot of information to understand how their school is performing, see successes, and know where to ask questions and get engaged. Dothan City Schools is happy to report their grade increased from a 79/C to an **81/B**.

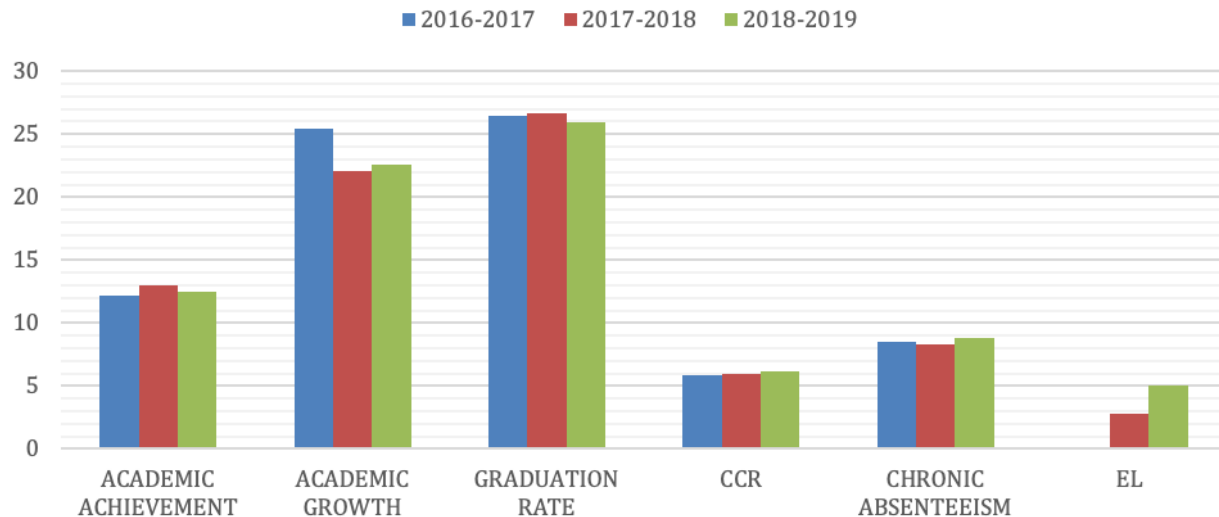
This grade reflects several different factors including academic achievement, academic growth, chronic absenteeism, graduation rates, college and career readiness, and English Language Proficiency.



EDUCATION
REPORT
CARD



DOTHAN CITY SCHOOLS



These factors are defined below:

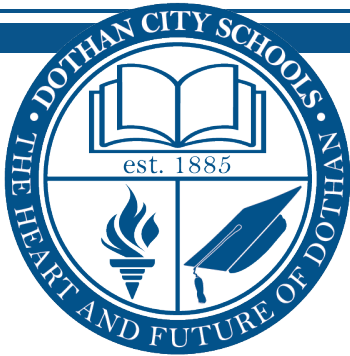
Academic Achievement is based on the percentage of proficient students in the areas of reading and math utilizing assessment results from Scantron, Alabama Alternate Assessment and ACT in test grades. The score is based on achievement levels as outlined below:

Level I - 0

Level II - 0.50

Level III - 1.00

Level IV - 1.25



Academic Growth is based on individual students who demonstrate improvement in reading and math with a growth record. The score is based on the weighted growth categories outlined below:

- Category 1 – 0
- Category 2 – 0.75
- Category 3 – 1.25
- Category 4 – 1.50

Graduation Rate is based on the percentage of high school students who graduate within 4 years of first entering the 9th grade. The 4-year graduation cohort for the fall 2019 accountability system is calculated 1 year in arrears and utilizes the 2017-2018 cohort data.

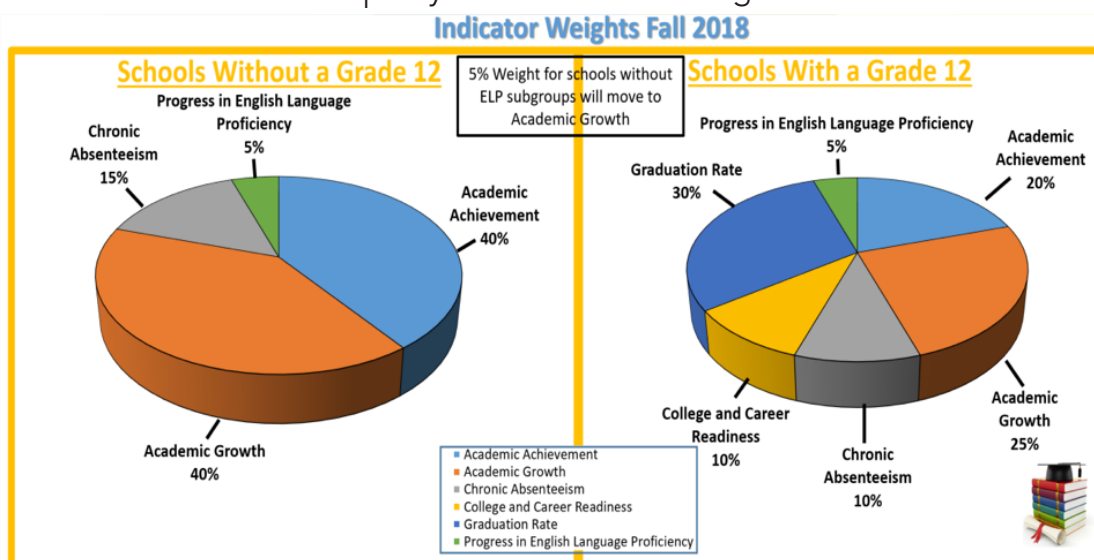
College and Career Readiness (CCR) is based on the percentage of students enrolled in the 4-year cohort who met at least one of the CCR indicators. The fall 2019 Accountability System utilizes the 2017-2018 data. CCR indicators are below:

- Benchmark on ACT subtest
- Qualifying Score on AP or IB Exam
- Military Enlistment
- Approved transcript college or postsecondary credit while in HS
- Silver Level or higher on the ACT WorkKeys
- Approved Industry Credentials

Progress in English Language Proficiency is based on the percentage of students who met their growth-to-target score, utilizing ACCESS 2.0 in grades 3-8 and 11.

Chronic Absenteeism is based on the percentage of students in grades K-12 who missed 18 or more days (both excused and unexcused). Points are based on students present.

Only students who are considered FAY (Full Academic Year) are included in the calculations for academic achievement, academic growth, and progress in English Language Proficiency. FAY student means a student must be enrolled at least 85% of the year with a matching assessment record. A break in enrollment does not disqualify a student from being FAY for a school or district.



DOTHAN CITY SCHOOL SCORES PER SCHOOL



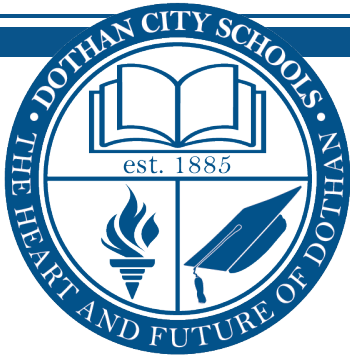
Twelve of the schools in DCS maintained or improved their scores from 2017-2018.

2018 – 2019 Report Card Scores	
Beverlye Middle School	88/B
Carver Middle School	99/A
Cloverdale Elementary	63/D
Dothan High School	72/C
Faine Elementary	58/F
Girard Elementary	61/D
Girard Middle School	68/D
Grandview Elementary	69/D
Heard Elementary	96/A
Hidden Lake Elementary	89/B
Highlands Elementary	94/A
Honeysuckle Middle School	58/F
Kelly Springs Elementary	82/B
Montana Elementary	95/A
Morris Slingluff Elementary	77/C
Northview High School	79/C
Selma Street Elementary	79/C

ELEMENTARY SCHOOLS

In the elementary level over a three-year period, Highlands Elementary, Morris Slingluff Elementary, and Kelly Springs Elementary showed improvement all three years. Highlands Elementary moved up one point maintaining their A score and Kelly Springs Elementary's score increased by 5 points moving their school score from C to B. Hidden Lake Elementary (now Primary) increased their school's score by 3 points to an 89 (B).

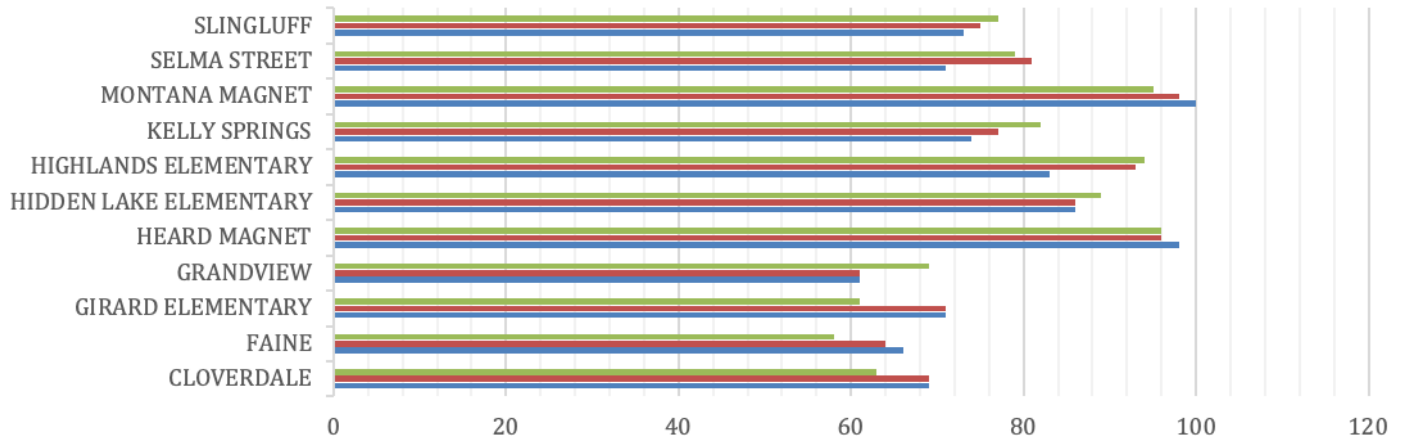
Slingluff Elementary is continuing their upward trend and now sits with a 77 that is a high C. Selma Street Elementary moved up almost 10 points last year but dropped by 2 points lowering the school grade to a C. Because of restructuring, some elementary schools where some schools changed in either grade designation or were closed.



Of the three now closed elementary schools, Cloverdale Elementary maintained their D score, Montana Magnet maintained an A but dropped three points, and Grandview Elementary remained a D school although the school moved up 8 points. Although Faine Elementary was in school improvement, the entire school has been completely reconstituted with many new teachers and programs. We expect Faine to move up with the upcoming school year.

Elementary Schools

■ 2018-2019 ■ 2017-2018 ■ 2016-2017

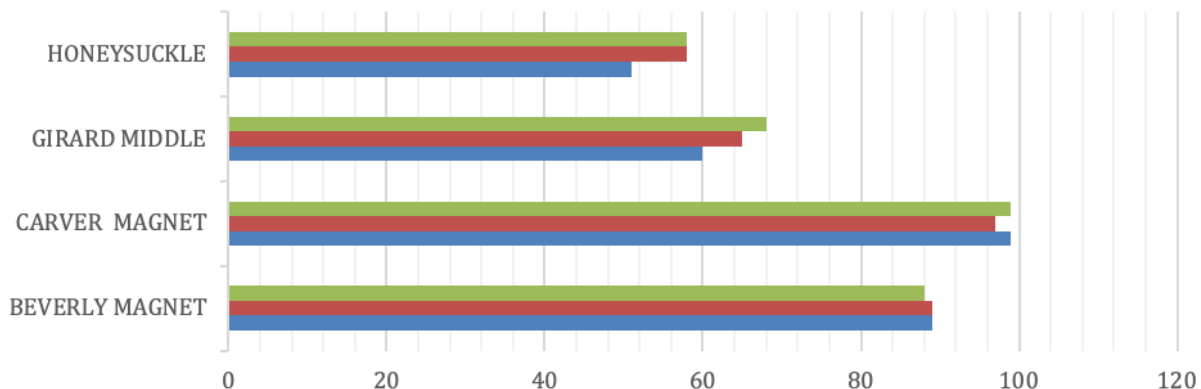


MIDDLE SCHOOLS

Several DCS schools have changed in grade designation. Beverly which was a middle school maintained a B on the report card, Beverly is now an intermediate school with grades 3-6. Carver maintained an A and moved the needle up by 2 points. Carver is no longer a middle school and now serves grades 3-6. Girard Middle School, which is now closed and changed to an intermediate school, moved up three points but remained with a D score. Honeysuckle Middle was closed and changed to the Dothan City Early Education Center and eventually Dothan City Central Office. Honeysuckle remained at an F status.

Middle Schools

■ 2018-2019 ■ 2017-2018 ■ 2016-2017

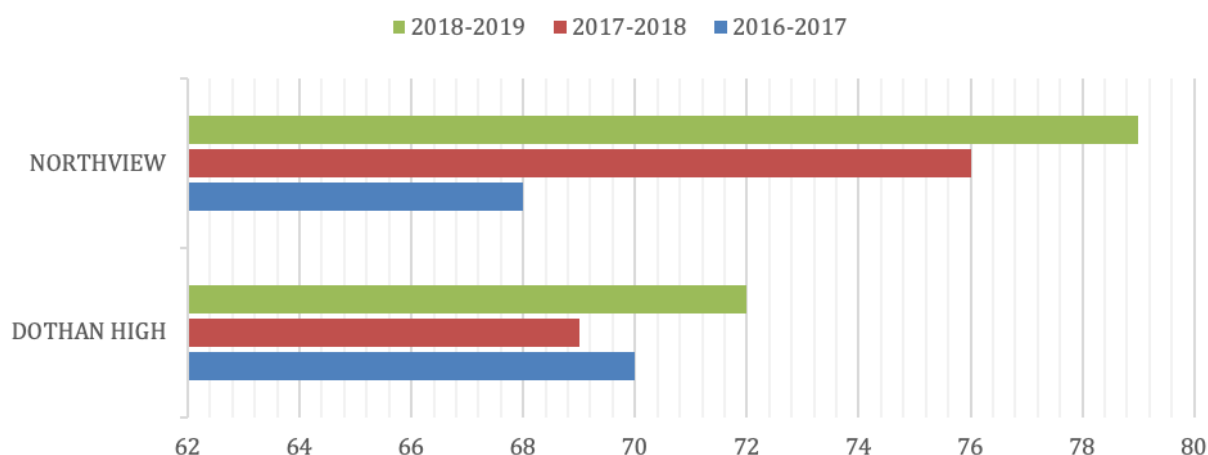


HIGH SCHOOLS



From last year to this year, the focus was clear on increasing academic achievement and attendance, and strengthening CTE programs. On the secondary level, Dothan High School and Northview High School both moved up 3 points. Dothan High School moved to a low C grade and Northview came up to a 79 or a high C.

High Schools



We commend all DCS administrators, principals, teachers and staff for their work on continuous improvement for our community and most importantly our students.

Our report card grades are important for several reasons. Although it is important to understand a letter grade is a snapshot of how a school is performing, it does show areas in which we are doing well, as well as areas in which we need to improve. Of course, one grade doesn't tell the whole story. We hope the this report card will add to our community discussion about how to constantly improve our schools—regardless of where it falls on the grading scale.

Our district has been restructured to give the best educational opportunities for all of our children. With changes in grade configuration, additional academic offerings, and many other innovations, we believe our system is on a steady upward climb.

We also hope you will view this report as a way to assist and become more involved in Dothan City Schools. See how you can use the report card information to support and improve our school. Help us raise the grades together for all schools and the system by taking a community approach to the mission of educating children. Together we can strive for excellence in all areas of education. Together we can.

Additional data and details about the factors used to determine grades are available on the Alabama State Department of Education's website, www.alsde.edu.