

## **CHS STEM prepares EVERY Student to EXCEL in the future he/ she creates.**

The CHS STEM Program is positioned to offer a college preparatory course of study to a broad spectrum of students. Immersion in STEM learning brings an unprecedented high school experience to our area. The STEM high school will move beyond the classroom, and connect its students with important university and business partnerships and resources. The CHS STEM Program utilizes already existing programs, curriculum, and teaching strategies from AP, AVID, and STEM in order to guarantee rigor, relevance, and relationships for all students involved.



### CHS STEM

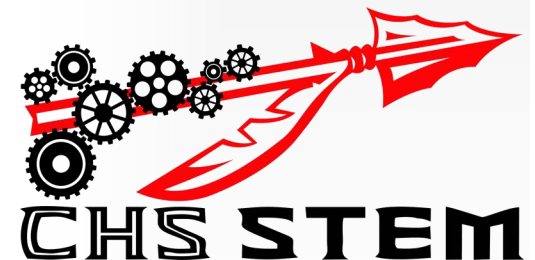
---

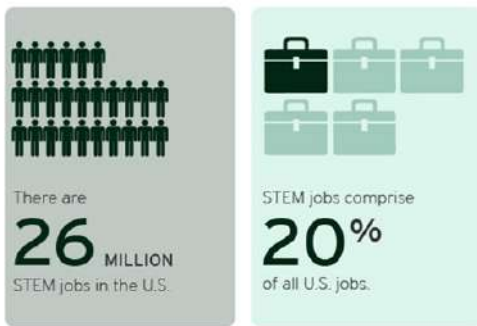
Central High School  
550 Warrior Way  
Grand Junction, CO 81504

Phone: 970-254-6200, x 22107  
E-mail:  
[tracy.arledge@d51schools.org](mailto:tracy.arledge@d51schools.org)

## **Central High School STEM**

### **Science, Technology, Engineering and Math**





## STEM Graduates

- Fully **comprehend** how their actions and decisions impact others and the world.
- **Understand** and are comfortable with uncertainty in and outside the classroom.
- Successfully **transfer** skills and knowledge gained through internships, apprenticeships, and similar experiences to future opportunities.
- Have the confidence to **strive** for success, effectively **manage** challenges, and **persist** in the face of unforeseen outcomes.
- Are **well-informed** and **contributing** members of society.
- **Acquire** and **assimilate** information to develop knowledge.
- **Possess** and **utilize** the knowledge, skills, and **habits of mind** necessary to pursue college, technical training, or immediately enter the work force.



## What Does a STEM Education Look Like?

**STEM** is an interdisciplinary approach to learning where rigorous academic concepts are coupled with real-world lessons as students apply science, technology, engineering, and mathematics in contexts that make connections between school, community, work and the global enterprise... We hope to foster the development of STEM literacy and with it the ability to compete in the new economy... STEM from the workforce perspective is significantly different and more about grooming workers with 21<sup>st</sup> century skills who are ready to jump right in.

Source: National Science Teachers Association

## STEM Certification:

- Teaching Cohort #1: 15 teachers are working on National STEM certification with NISE.
- Schoolwide: Our campus will be the first in Colorado to obtain NISE certification by the spring of 2018.

## STEM at CHS:

Please come to an informational meeting at  
**CHS on February 9th or on February 28th from 6:30-7:30 in the Room 501**

## STEM Partners with CHS:



COORSTEK  
 Caption: use only pictures or graphics