

AHERA 2016 REINSPECTION

WIGGINS SCHOOL DISTRICT
320 CHAPMAN STREET
WIGGINS, CO 80654

OWNER'S REPRESENTATIVE:

RLH Engineering, Inc.
541 East Garden Drive, Unit S
Windsor, CO 80550
970-686-5695
970-686-5696 FAX

RLH Engineering Project #16072

RLHengineering, inc.

Facility Planning, Engineering, & Environmental Services

December 23, 2016

Mr. John Kopetzky
Wiggins School District
320 Chapman Street
Wiggins, CO 80654

SUBJECT: Wiggins School District
2016 AHERA 3-Year Reinspection
RLH Engineering Project Number 16072

Dear John,

RLH Engineering has completed all of the 2016 AHERA 3-Year Reinspection of Wiggins School District buildings that are managed under AHERA. All ACM currently in the WSD Asbestos Management Plan continue to be in good condition, with the exception or notes of the following:

Wiggins Elementary School

Prior to the reinspection, it was noted that it was thought all ACM had been removed prior to a 2007 renovation of WES. However, no documentation existed from this 2007 renovation regarding abatement or architect letter stating no ACM was used in the renovation. As such, a survey update was performed for the building. While no ACM was identified in materials installed in 2007, several ACM were identified as remaining in the facility (either from previous AHERA plan notation, or discovery of new materials by sampling). The following materials should continue to be managed under the AHERA plan:

- 12"x12" Floor Tile – Kitchen Storage/Office: This material is in good condition
- Adhesive under 2"x2" ceramic floor tile – Kitchen: This material is assumed ACM, as it is inaccessible for sampling without damaging the ceramic tile. The tile itself is in good condition.
- Adhesive under 4"x4" ceramic wall tile – Kitchen: This material was confirmed ACM through sampling, but was not previously identified as ACM in the management plan. The material is in good conduit and protected by ceramic tile.

- **Black Mastic – Misc. Areas:** This material exists in many of the locations where asbestos floor tile formerly existed. The material is in good condition and covered by non-ACM flooring, with the exception of the main data closet. It is recommended this material be covered with non-ACM flooring, in order to preserve the ACM in good condition.
- **Transite Panels – Exterior, at windows/doors:** This material is assumed ACM, but was not previously identified in the AHERA management plan. The panels are in good condition but should be painted to preserve the panels in good condition.

Wiggins Event Center

This facility was constructed in 2007, but no documentation exists in the form of an architect letter stating no ACM was used in the construction. As such, RLH performed a comprehensive asbestos survey of the facility and identified no ACM. A complete survey report has been provided under separate cover.

Wiggins Middle School

This facility was constructed in the late 90's, but no documentation exists in the form of an architect letter stating no ACM was used in the construction. As such, RLH performed a comprehensive asbestos survey of the facility and identified no ACM. A complete survey report has been provided under separate cover.

Wiggins High School

Several ACMs were identified as remaining in the facility (either from previous AHERA plan notation, or discovery of new materials by sampling). The following materials should continue to be managed under the AHERA plan:

- **12"x12" Floor Tile, Cream/Tan/Brown, Non-ACM Mastic – Restrooms, Locker Rooms, Concessions Area, Sick Room:** This material is in good condition. However, some areas noted are not consistent with the material description from the previous management plan documents. Sampling of these materials is recommended to confirm presence of ACM.
- **9"x9" Floor Tile, Green with White and Black, ACM mastic – Concessions:** This material is in good condition. However, some areas noted are not consistent with the material description from the previous management plan documents. Sampling of these materials is recommended to confirm presence of ACM.

- 9"x9" Floor Tile, Tan with Cream and Brown Streaks, non-ACM mastic – Home Ec, Math: This material is in good condition and covered by carpet or other non-ACM flooring.
- 9"x9" Floor Tile, Green with White Blotch, ACM mastic – Science Rooms, Prep Room, Dark Room, Library: This material is in good condition. However, some areas noted are not consistent with the material description from the previous management plan documents. In particular, in the Science Rooms, visible floor tile is a 12"x12" white/gray tile. However, green 9"x9" tile is visible under older casework. Although the exposed areas of 9"x9" tiles may have been removed/replaced, the presence of ACM mastic under the newer tile is suspected to remain and these materials should remain managed under the asbestos management plan program. Sampling of these materials is recommended to confirm presence of ACM.
- Pipe Insulation – Crawlspace/Tunnels: This material exhibits localized damage at various locations, but is inaccessible to most building occupants, accessible only to district administration and maintenance staff. However, doors and hatches further segregating this material from personnel were noted as in poor condition, and lacked proper warning placards. For damaged materials in storage or utility areas accessible to staff, repair or abatement of damaged materials is recommended. Where materials can be closed off to staff via locked doors, it is recommended these barriers be reestablished and proper warning placards affixed.
- Transite Panels – Above Main Entrance at Admin Office: This material is assumed ACM, but was not previously identified in the AHERA management plan. The panels are in good condition but should be painted to preserve the panels in good condition.

Wiggins VoAg Bldg

Several ACM were identified as remaining in the facility (either from previous AHERA plan notation, or discovery of new materials by sampling). The following materials should continue to be managed under the AHERA plan:

- 12"x12" Floor Tile, Cream/Tan/Brown, Assumed ACM Mastic – Boys Restroom: This material is in good condition.
- 12"x12" Floor Tile, Cream/Gray, Assumed ACM Mastic – Girls Restroom: This material is in good condition.
- 9"x9" Floor Tile, Light Tan with Brown Streaks, non-ACM Mastic – East/West Classrooms: This material is in good condition, covered by carpet in Music (West) Classroom.

- 9"x9" Floor Tile, Brown with Cream Streaks, non-ACM Mastic – Office: This material is in good condition,

All pertinent documentation for this AHERA 3-Year Reinspection has been added to your current asbestos files and Management Plans.

Beyond 3-Year Reinspection obligations, a copy of a Notice of Inspection form, provided to the District by CDPHE in May 2016 was provided for our review and assessment. The Inspection form indicates several potential deficiencies in the District's AHERA Management Plan. The following are our observations and recommendations on these potential deficiencies:

- It is noted the last 3-Year Reinspection documentation is from 2007 and a reinspection needs to be performed. The information presented previously in this letter, and in the attached documentation, serve as the current 3-Year Reinspection. The next Reinspection should be scheduled for summer 2019.
- It is noted the management plan lacks sampling records for wall textures and block fillers. However, there is indication only the original management plan information, provided by Hall-Kimbrel, was reviewed by the CDPHE inspector. Our review of district records indicates further surveys of District facilities have been conducted, including 1992 surveys by ATC Associates. These surveys include wall board samples for most District facilities that were in existence at the time. Block filler samples were indeed not present, therefore, RLH collected samples of block filler materials during our survey/reinspection work. Some block filler at Wiggins Elementary School was determined to be asbestos containing. This material is noted in the survey and reinspection information, and is now included in the asbestos management plan. Block fillers at other facilities, including the Jr/Sr High School and Event Center, were determined to be non-ACM. Sampling information is included in either survey and/or reinspection documentation.
- Two-hour Awareness training is noted as needed by custodial/maintenance personnel. RLH concurs with this assessment, and recommends training sessions be scheduled for applicable personnel. Several training providers are located in the Denver/Front Range area, and several offer online course offerings.
- Periodic Surveillance is noted as needing documentation. This is an informal review of material conditions on a 6-month interval. This review does not need to be conducted by a certified asbestos Building Inspector, but should be conducted by an individual with 2-hour Awareness training and knowledge of ACM in the District facilities.
- Annual Notification of asbestos-related activities and Notices to Short-term (Contractors) Workers were noted as missing. Annual notifications should be posted in a location where all District patrons can review the information. It is not uncommon for school districts to post their annual notifications on their district website, dedicating a link to such information. If a website link is not possible, annual notification within a newsletter

Mr. John Kopetzky
December 23, 2016
Page 5 of 5

is typically sufficient. In addition to annual notification to patrons, a form letter should be made available to contract workers regarding the districts AHERA plan and availability of these documents, prior to their work within District facilities.

If you need additional information or assistance, please contact me.

Sincerely,
RLH Engineering, Inc.



Jeff Kirtley
Senior Project Manager

Attachments: For each facility –	Assessment Table Preventative Measures/Response Action Table Floor Plan Updates
Enclosed, under Separate Cover:	Wiggins Elem. School Asb. Survey (Update) Wiggins Middle School Asb. Survey Wiggins Event Center Asb. Survey

WSD_AHERA3YR_16072

October 2016

LEA: Wiggins School District
BUILDING: Wiggins Elementary School
415 Main Street
Wiggins, CO 80654

ASSESSMENT OF MATERIALS

HOMOGENEOUS MATERIAL	LOCATION	FRIAB	ACCESS	CONDITION	AHERA CLASS	REASONS FOR CLASSIFICATION	2016 REINSPECTION
12"x12" Floor Tile – Cream with tan streaks (Mastic is ACM)	Kitchen Storage Areas, Kitchen Office	NF	LOW	GOOD	5	Non-friable material in good condition	Floor tile in good condition, minor chips and cracks.
4"x4" Ceramic Tile – White (Adhesive is ACM)	Kitchen	NF	LOW	GOOD	5	Non-friable material in good condition	ACM adhesive is covered by ceramic tile
2"x2" Ceramic Tile – Tan (Adhesive is ASSUMED ACM)	Kitchen	NF	LOW	GOOD	5	Non-friable material in good condition	Material is ASSUMED ACM to avoid damage to ceramic tile when sampling. Material is in good condition, protected by ceramic tile. Sampling recommended if renovation will impact ceramic tile, to determine if material is ACM/non-ACM
Mastic - Black	Kindergarten Rooms, 1 st Grade Rooms, Board Room, 4 th Grade Room, Admin Area, Gym restrooms and storage areas (All areas where ACM floor tile once existed)	NF	LOW	GOOD	5	Non-friable material in good condition	Most of mastic is protected by carpet or other non-ACM flooring, except where exposed in Date Closet.
Transite Panels (assumed ACM)	Panels below classroom windows	NF	LOW	GOOD	5	Non-friable material in good condition	Paint is peeling from some panels, but panels are intact.
Block Filler	Kindergarten Rooms, 1 st Grade Rooms, Board Room	NF	LOW	GOOD	5	Non-friable material in good condition	Material is covered by paint and in good condition

2016 Inspection: State of Colorado Asbestos Building Inspector Name and Signature:

 #91683

Inspection Date:

10/14/16

AHERA assessment category:

1 = Damaged or significantly damaged TSI ACBM, 2 = Damaged friable surfacing ACBM, 3 = Significantly damaged friable surfacing ACBM
4 = Damaged or significantly damaged friable miscellaneous ACBM, 5 = ACBM with potential for damage, 6 = ACBM with potential for significant damage
7 = Any remaining friable ACBM or friable suspected ACBM, X = not applicable (material is non ACBM or non-friable surfacing or miscellaneous material)

FRIABILITY: F = friable, NF = non-friable

HOMOGENEOUS AREA NUMBER EACH LOCATION	PREVENTIVE MEASURES AND RESPONSE ACTIONS SCHEDULED		SCHEDULE		2016 REINSPECTION
	Preventive measure, response actions, and initial/additional cleanings	Begin		Complete	
12"x12" Floor Tile – Cream with tan streaks (Mastic is ACM)	PM: See original AHERA plan for Preventative Measures prescribed RA: See original AHERA plan for Recommended Actions prescribed	1989		Continuous	PM: Continue waxing tile to maintain material in good condition RA: None, unless disturbance by renovation/demolition anticipated. Sampling of material should be conducted to verify presence of ACM. Perform abatement if necessary.
4"x4" Ceramic Tile – White (Adhesive is ASSUMED ACM)	PM: None prescribed, material not identified in previous surveys/inspections; RA: None prescribed, material not identified in previous surveys/inspections;	2016		Continuous	PM: Continue maintaining tile in present location RA: None, unless disturbance by renovation/demolition anticipated. Sampling of material should be conducted to verify presence of ACM. Perform abatement if necessary.
2"x2" Ceramic Tile – Tan (Adhesive is ASSUMED ACM)	PM: None prescribed, material not identified in previous surveys/inspections; RA: None prescribed, material not identified in previous surveys/inspections;	2016		Continuous	PM: Continue waxing tile to maintain material in good condition RA: None, unless disturbance by renovation/demolition anticipated. Sampling of material should be conducted to verify presence of ACM. Perform abatement if necessary.
Mastic - Black	PM: See original AHERA plan for Preventative Measures prescribed RA: See original AHERA plan for Recommended Actions prescribed	1989		Continuous	PM: Maintain non-ACM flooring on mastic in good condition. Cover exposed mastic in Data Closet RA: None, unless disturbance by renovation/demolition anticipated. Sampling of material should be conducted to verify presence of ACM. Perform abatement if necessary.
Transite Panels (assumed ACM)	PM: None prescribed, material not identified in previous surveys/inspections; exterior material not managed under AHERA RA: None prescribed, material not identified in previous surveys/inspections; exterior material not managed under AHERA	2016		Continuous	PM: Keep materials painted and in good condition RA: None

2016 Inspection: State of Colorado Asbestos Management Planner Name and Signature






Inspection Date: 12/16/17

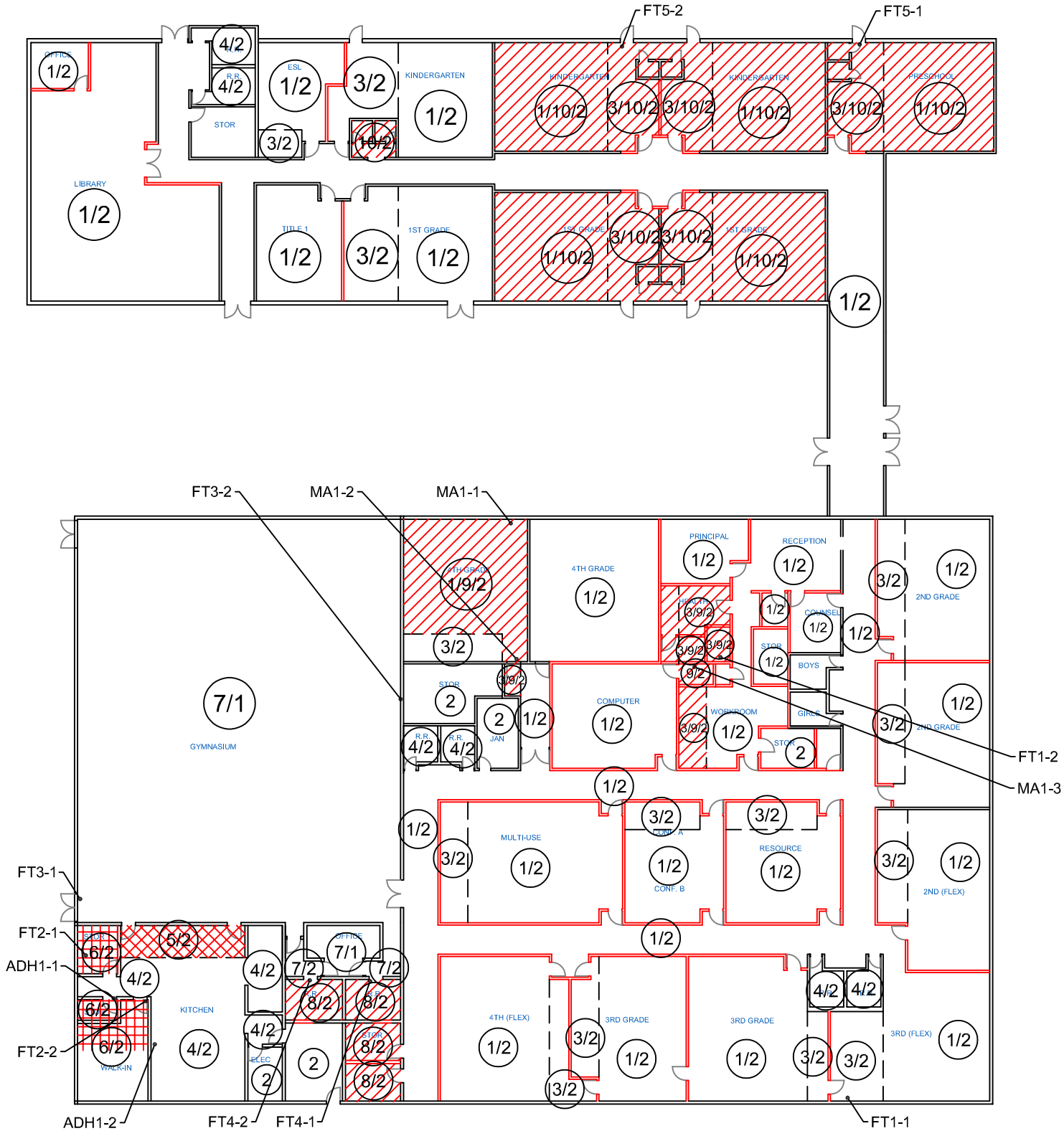
Remaining ACBM

WIGGINS SCHOOL DISTRICT - WIGGINS ELEMENTARY SCHOOL					
Homogeneous Materials - Floors					
Code	Material	Sample Number	Quantity	ACM?	
1	carpet	NOT SAMPLED	~ ~	NON-SUSPECT	
2	concrete	NOT SAMPLED	~ ~	NON-SUSPECT	
3	12"x 12" vct - white w/blue/grey specks floor tile	FT1-1, FT1-2	3,190 SF	NO	
4	1"x 1" tan ceramic tile	ADH1-1, ADH1-2	1,425 SF	NO	
5	2"x 2" brown ceramic tile	NOT SAMPLED	190 SF	ASSUMED	
6	12"x 12" vct - tan w/brown streaks floor tile	FT2-1, FT2-2	290 SF	TILE: YES MASTIC: YES	
7	12"x 12" vct - white w/grey streaks floor tile	FT3-1, FT3-2	6,500 SF	TILE: NO MASTIC: NO	
8	12"x 12" vct - white w/black/grey streaks, green accent floor tile	FT4-1, FT4-2	325 SF	TILE: NO BLACK MASTIC: YES	
9	black mastic	MA1-1, MA1-2, MA1-3	1,090 SF	YES	
10	12"x 12" white w/grey streaks floor tile	FT5-1, FT5-2	4,285 SF	TILE: NO BLACK MASTIC: YES	

LEGEND

-  THIS SYMBOL INDICATES THE APPROXIMATE LOCATION OF ASBESTOS CONTAINING FLOOR TILE AND BLACK MASTIC
-  THIS SYMBOL INDICATES THE APPROXIMATE LOCATION OF ASBESTOS CONTAINING BLACK MASTIC BENEATH NON-ACM FLOOR TILE OR CARPETING
-  THIS SYMBOL INDICATES THE APPROXIMATE LOCATION OF ASSUMED ASBESTOS CONTAINING CERAMIC TILE, ADHESIVE, AND GROUT

NOTE:
THIS DOCUMENT IS FOR THE EXCLUSIVE USE OF
WIGGINS SCHOOL DISTRICT AND SHOULD NOT BE USED
AS A BIDDING DOCUMENT.



MAIN FLOOR PLAN
SCALE: 1"=30'-0"

FLOORS

RLH engineering, inc.
Facility Planning, Engineering, & Environmental Services

541 East Garden Drive, Unit S
Windsor, Colorado 80550
Office (719) 686-5695
Fax (719) 686-5696

WIGGINS SCHOOL DISTRICT
WIGGINS ELEMENTARY SCHOOL
ASBESTOS MANAGEMENT PLAN

STREET ADDRESS
CITY, COLORADO ZIP

DRAWING #: 1
SHEET TITLE: ASBESTOS
MANAGEMENT PLAN
RLH Project #: 16072
DATE: OCTOBER 2016
CAD File: \\...\\16072\\CAD\\
WIGGINS ES_MP.DWG

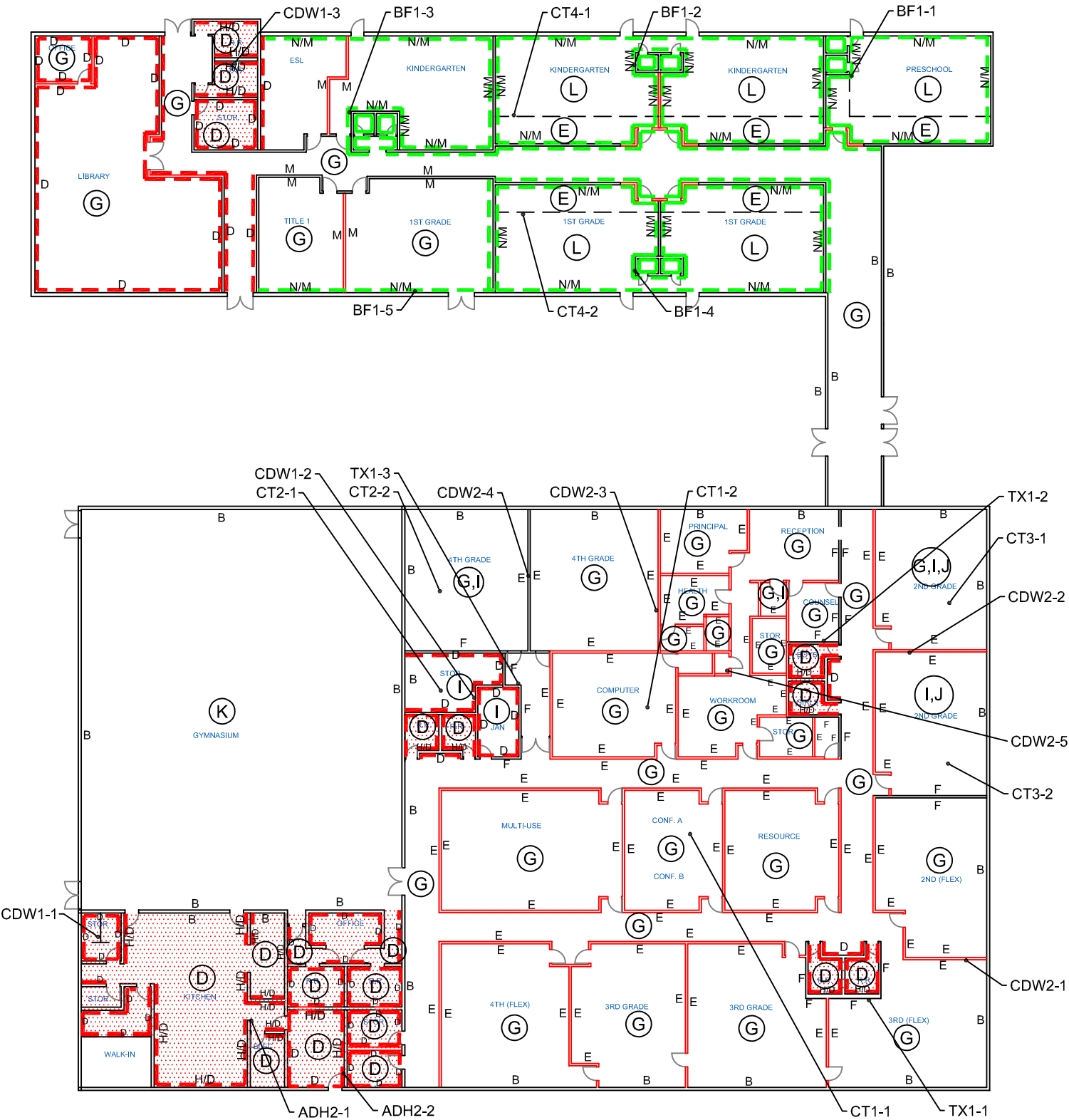
NOTE:
THIS DRAWING MUST BE
PRINTED IN COLOR TO
SHOW ALL INFORMATION
ACCURATELY.

WIGGINS SCHOOL DISTRICT - WIGGINS ELEMENTARY SCHOOL				
Homogeneous Materials - Ceilings & Walls				
Code	Material	Sample Number	Quantity	ACM?
A	wood	NOT SAMPLED	~ ~	NON-SUSPECT
B	brick	NOT SAMPLED	~ ~	NON-SUSPECT
C	concrete	NOT SAMPLED	~ ~	NON-SUSPECT
D	drywall (original)	CDW1-1, CDW1-2, CDW1-3	13,200 SF	JOINT COMPOUND: YES TRACE (<1%) BY COMPOSITE
E	drywall (2004) textured	CDW2-1, CDW2-2, CDW2-3, CDW2-4, CDW2-5	15,600 SF	NO
F	original drywall w/2004 texture	TX1-1, TX1-2, TX1-3	2,250 SF	NO
G	2x 4' chicken feet/pinhole ceiling tile	CT1-1, CT1-2	20,800 SF	NO
H	4"x 4" white ceramic tile	ADH2-1, ADH2-2	3,725 SF	YES***
I	2x 4' crater/pinhole ceiling tile	CT2-1, CT2-2	950 SF	NO
J	2x 4' widthwise fissure/pinhole ceiling tile	CT3-1, CT3-2	775 SF	NO
K	vinyl/fiberglass panel	NOT SAMPLED	~ ~	NON-SUSPECT
L	12"x 12" chicken feet/glue-on ceiling tile	CT4-1, CT4-2	3,200 SF	NO
M	ceramic block	NOT SAMPLED	~ ~	NON-SUSPECT
N	cmu block - painted	BF1-1, BF1-2, BF1-3, BF1-4, BF1-5	3,960 SF	BLOCK FILLER: YES
***The white ceramic tile and associated adhesive is labeled as ACM because the samples taken contained "white compound" in the lab report that was asbestos containing. This is joint compound from the drywall that the white ceramic tile is adhered to.				

LEGEND

- THIS SYMBOL INDICATES THE APPROXIMATE LOCATION OF ASBESTOS CONTAINING BLOCK FILLER ON CMU BLOCK WALLS
- THIS SYMBOL INDICATES THE APPROXIMATE LOCATION OF ASBESTOS CONTAINING JOINT COMPOUND ON DRYWALL

NOTE:
THIS DOCUMENT IS FOR THE EXCLUSIVE USE OF
WIGGINS SCHOOL DISTRICT AND SHOULD NOT BE USED
AS A BIDDING DOCUMENT.



MAIN FLOOR PLAN
SCALE: 1"=30'-0"



CEILINGS & WALLS

RLH engineering, inc.
Facility Planning, Engineering, & Environmental Services

541 East Garden Drive, Unit S
Windsor, Colorado 80550
Office: (719) 686-5695
Fax: (719) 686-5696

WIGGINS SCHOOL DISTRICT
WIGGINS ELEMENTARY SCHOOL
ASBESTOS MANAGEMENT PLAN

DRAWING #: 2
SHEET TITLE: ASBESTOS
MANAGEMENT PLAN
RLH Project #: 16072
DATE: OCTOBER 2016
CAD File: \\...\\16072\\CAD\\
WIGGINS ES_MP.DWG

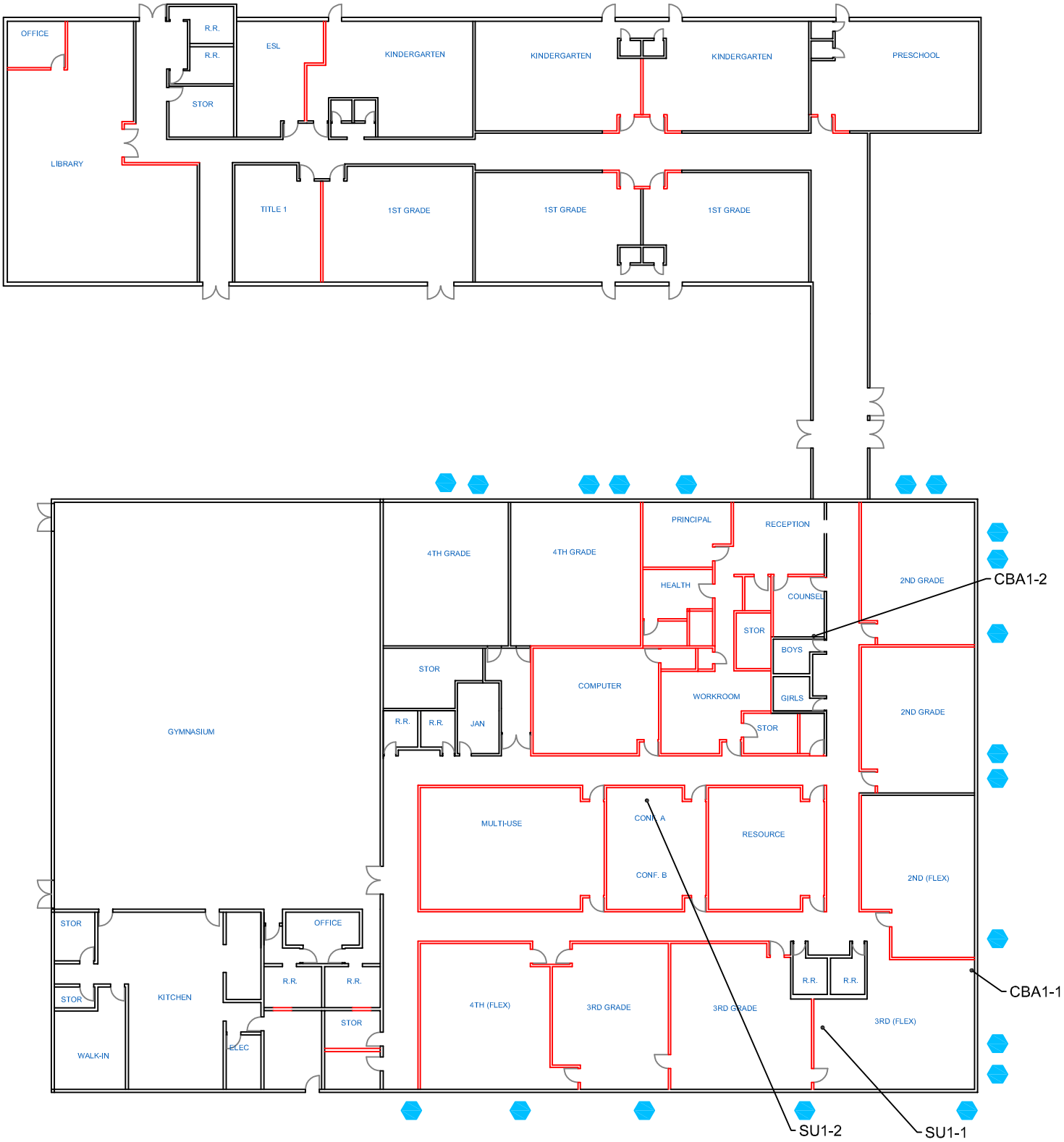
NOTE:
THIS DRAWING MUST BE
PRINTED IN COLOR TO
SHOW ALL INFORMATION
ACCURATELY.

WIGGINS SCHOOL DISTRICT - WIGGINS ELEMENTARY SCHOOL			
Homogeneous Materials - TSI & Miscellaneous			
Material	Sample Number	Quantity	ACM?
grey sink undercoating	SU1-1, SU1-2	13 EA	NO
covebase adhesive	CBA1-1, CBA1-2	~ ~	NO
transite window panels	NOT SAMPLED	20 EA	ASSUMED

LEGEND

THIS SYMBOL INDICATES THE APPROXIMATE LOCATION OF ASSUMED ASBESTOS CONTAINING TRANSITE WINDOW PANELS

NOTE:
THIS DOCUMENT IS FOR THE EXCLUSIVE USE OF WIGGINS SCHOOL DISTRICT AND SHOULD NOT BE USED AS A BIDDING DOCUMENT.



MAIN FLOOR PLAN
SCALE: 1"=30'-0"



TSI & MISCELLANEOUS

RLH engineering, inc.
Facility Planning, Engineering, & Environmental Services

541 East Garden Drive, Unit S
Windsor, Colorado 80550
Office (719) 846-6995
Fax (719) 846-5096

WIGGINS SCHOOL DISTRICT
WIGGINS ELEMENTARY SCHOOL
ASBESTOS MANAGEMENT PLAN

STREET ADDRESS
CITY, COLORADO ZIP

DRAWING #: 3
SHEET TITLE: ASBESTOS
MANAGEMENT PLAN
RLH Project #: 16072
DATE: OCTOBER 2016
CAD File: \\...\\16072\\CAD\\
WIGGINS ES_MP.DWG

NOTE:
THIS DRAWING MUST BE
PRINTED IN COLOR TO
SHOW ALL INFORMATION
ACCURATELY.

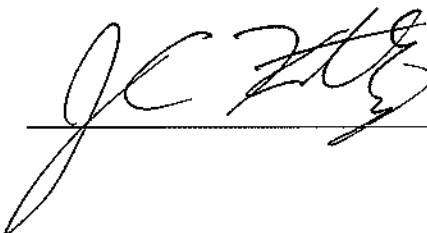
October 2016

LEA: Wiggins School District
BUILDING: Wiggins Jr/Sr High School
320 Chapman Street
Wiggins, CO 80654

ASSESSMENT OF MATERIALS

HOMOGENEOUS MATERIAL	LOCATION	FRIAB	ACCESS	CONDITION	AHERA CLASS	REASONS FOR CLASSIFICATION	2016 REINSPECTION
12"x12" Floor Tile – Cream, Tan, Brown (Mastic is non-ACM)	Girls/Boys Restrooms, Girls/Boys Locker Rooms, Concessions Area, Sick Room	NF	LOW	GOOD	5	Non-friable material in good condition	All exposed floor tile in Restrooms, sick Room and Concessions Area in good condition and well waxed. However, some areas are not consistent with description. Sampling should be conducted to confirm presence of ACM prior to disturbance. Floor tile in Locker Rooms, if still exists, covered by epoxy floor
9"x9" Floor Tile – Green with White and Black streaks (Mastic is also ACM)	Concession	NF	LOW	GOOD	5	Non-friable material in good condition	Floor tile in good condition. However, tile is a 12"x12" cream, rather than 9"x9" green, as indicated in previous inspections. Sampling should be conducted to confirm presence of ACM prior to disturbance. ACM mastic assumed to still exist under Floor Tile
9"x9" Floor Tile – Tan with Cream and Brown streak (Mastic is non-ACM)	Home Ec, Math (assumed)	NF	LOW	GOOD	5	Non-friable material in good condition	Previous 3-yr reinspection notes this material in Math, but room is carpeted, tile assumed under carpet. Floor tile is apparent under carpet in Home Ec. Portion of room is tiled with newer VCT, ACM tile assumed under newer VCT.
9"x9" Floor Tile – Green with White Blotch (Mastic is also ACM)	Science Rooms, Prep Room, Dark Room, Library (assumed)	NF	LOW	GOOD	5	Non-friable material in good condition	Previous 3-yr reinspection notes this material in Library, but room is carpeted, tile assumed under carpet. Science Rooms, Prep Room and Dark Room are all newer white 12"x12" VCT, but 9"x9" green can still be seen under fixed casework. . ACM mastic assumed to still exist under Floor Tile
Pipe Insulation	Crawlspace/Tunnels under Gym and Jr. High	F	LOW	DAMAGED	1	Localized damage on less than one-tenth of TSI (where visible), but may be more in inaccessible areas	Areas accessible with TSI noted as having damaged material. Prior reinspection information notes damage to material in tunnels and crawlspace. Access doors to areas with TSI have placards, but doors are not secured.
Transite Panels (assumed ACM)	Above main entrance at Admin	NF	LOW	GOOD	5	Non-friable material in good condition	Material is installed at a height out of reach and in good condition

2016 Inspection: State of Colorado Asbestos Building Inspector Name and Signature:

 #9683

Inspection Date:

10/14/16

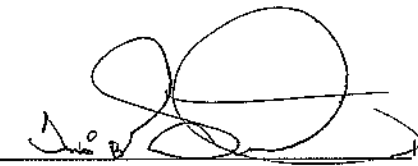
AHERA assessment category:

1 = Damaged or significantly damaged TSI ACBM, 2 = Damaged friable surfacing ACBM, 3 = Significantly damaged friable surfacing ACBM
4 = Damaged or significantly damaged friable miscellaneous ACBM, 5 = ACBM with potential for damage, 6 = ACSM with potential for significant damage
7 = Any remaining friable ACBM or friable suspected ACBM, X = not applicable (material is non ACBM or non-friable surfacing or miscellaneous material)

FRIABILITY: F = friable, NF = non-friable

PREVENTIVE MEASURES AND RESPONSE ACTIONS SCHEDULED					
HOMOGENEOUS AREA NUMBER EACH LOCATION	Preventive measure, response actions, and Initial/additional cleanings	Begin	SCHEDULE	Complete	2016 REINSPECTION
12"x12" Floor Tile – Cream, Tan, Brown (Mastic is non- ACM)	PM: See original AHERA plan for Preventative Measures prescribed	1989		Continuous	PM: Continue waxing tile to maintain material in good condition
	RA: See original AHERA plan for Recommended Actions prescribed				RA: None, unless disturbance by renovation/demolition anticipated. Sampling of material should be conducted to verify presence of ACM. Perform abatement if necessary.
9"x9" Floor Tile – Green with White and Black streaks (Mastic is also ACM)	PM: See original AHERA plan for Preventative Measures prescribed	1989		Continuous	PM: Continue waxing tile to maintain material in good condition
	RA: See original AHERA plan for Recommended Actions prescribed				RA: None, unless disturbance by renovation/demolition anticipated. Sampling of material should be conducted to verify presence of ACM. Perform abatement if necessary.
9"x9" Floor Tile – Tan with Cream and Brown streak (Mastic is non- ACM)	PM: See original AHERA plan for Preventative Measures prescribed	1989		Continuous	PM: Continue waxing tile to maintain material in good condition
	RA: See original AHERA plan for Recommended Actions prescribed				RA: None, unless disturbance by renovation/demolition anticipated. Sampling of material should be conducted to verify presence of ACM. Perform abatement if necessary.
9"x9" Floor Tile – Green with White Blotch (Mastic is also ACM)	PM: See original AHERA plan for Preventative Measures prescribed	1989		Continuous	PM: Continue waxing tile to maintain material in good condition
	RA: See original AHERA plan for Recommended Actions prescribed				RA: None, unless disturbance by renovation/demolition anticipated. Sampling of material should be conducted to verify presence of ACM. Perform abatement if necessary.
Pipe Insulation	PM: See original AHERA plan for Preventative Measures prescribed	1989		Continuous	PM: Secure access ways to tunnels and crawlspace; affix appropriate warning labels.
	RA: See original AHERA plan for Recommended Actions prescribed				RA: Repair damaged TSI in accessible locations. Perform abatement if renovation/demolition will further disturb material.
Transite Panels (assumed ACM)	PM: None prescribed, material not identified in previous surveys/inspections; exterior material not managed under AHERA	2016		Continuous	PM: Keep materials painted and in good condition
	RA: None prescribed, material not identified in previous surveys/inspections; exterior material not managed under AHERA				RA: None

2016 Inspection: State of Colorado Asbestos Management Planner Name and Signature



Inspection Date: 12/16/17

Remaining ACBM

Attached is a detailed description in the form of a blueprint, diagram, or in writing of any ACBM or suspected ACBM assumed to be ACM which remains in the school once response actions are undertaken pursuant to 763.90. This description shall be updated as response actions are completed.
CDPHE (3/88)

RLH engineering, inc.
Facility Planning, Engineering, & Environmental Services

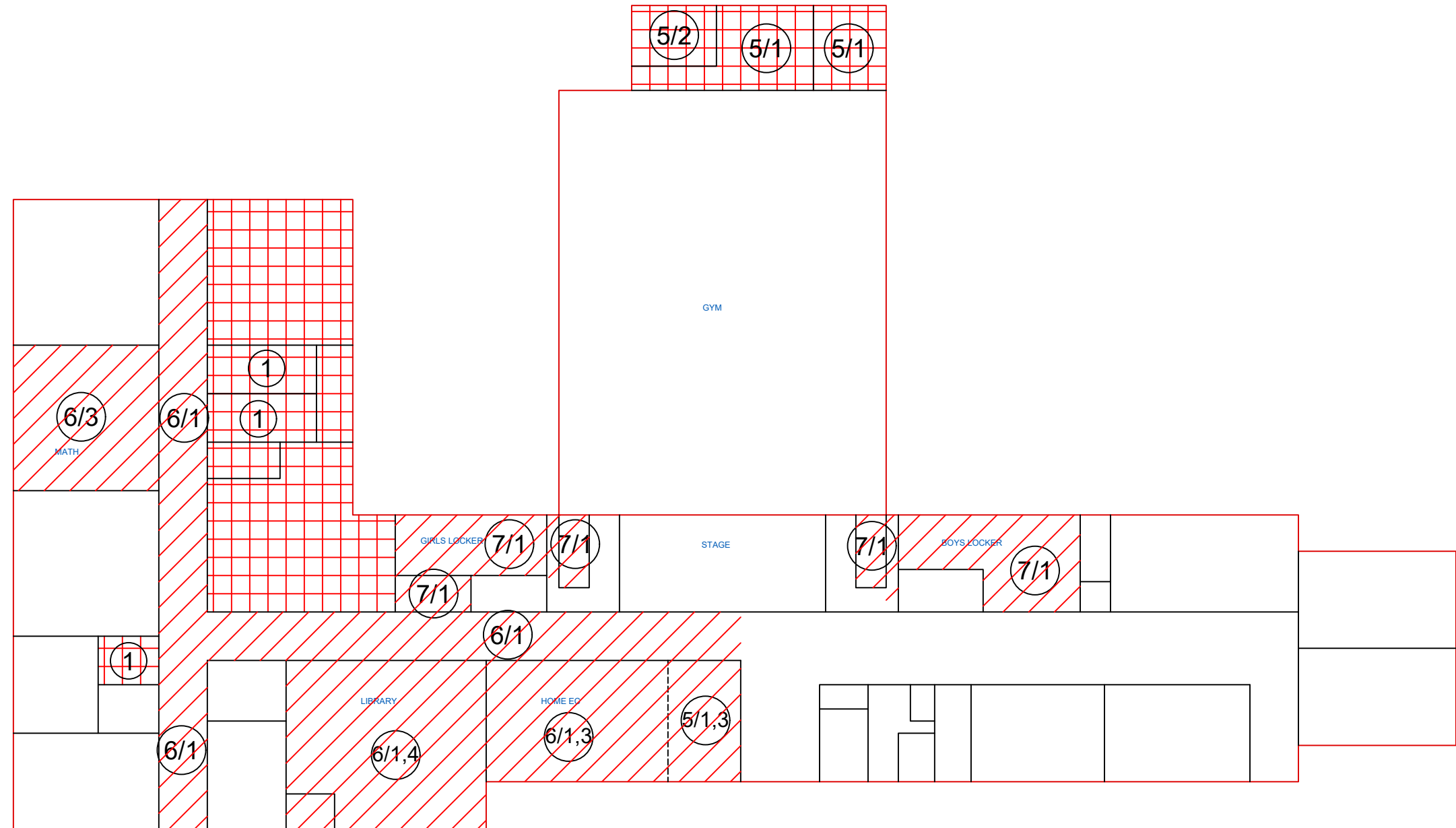
WIGGINS SCHOOL DISTRICT
WIGGINS JR/SR HIGH SCHOOL
ASBESTOS MANAGEMENT PLAN

DRAWING #: 1
SHEET TITLE: ASBES
MANAGEMENT PLAN
RLH Project #: 16072
DATE: DECEMBER 20
CAD File:\...\16072\CA
WIGGINS HS_MP.DWG

LEGEND



THIS SYMBOL INDICATES THE APPROXIMATE LOCATION
OF CARPET OR OTHER FLOORING OVER ACM TILE
AND/OR ACM MASTIC



MAIN FLOOR PLAN
SCALE: NONE



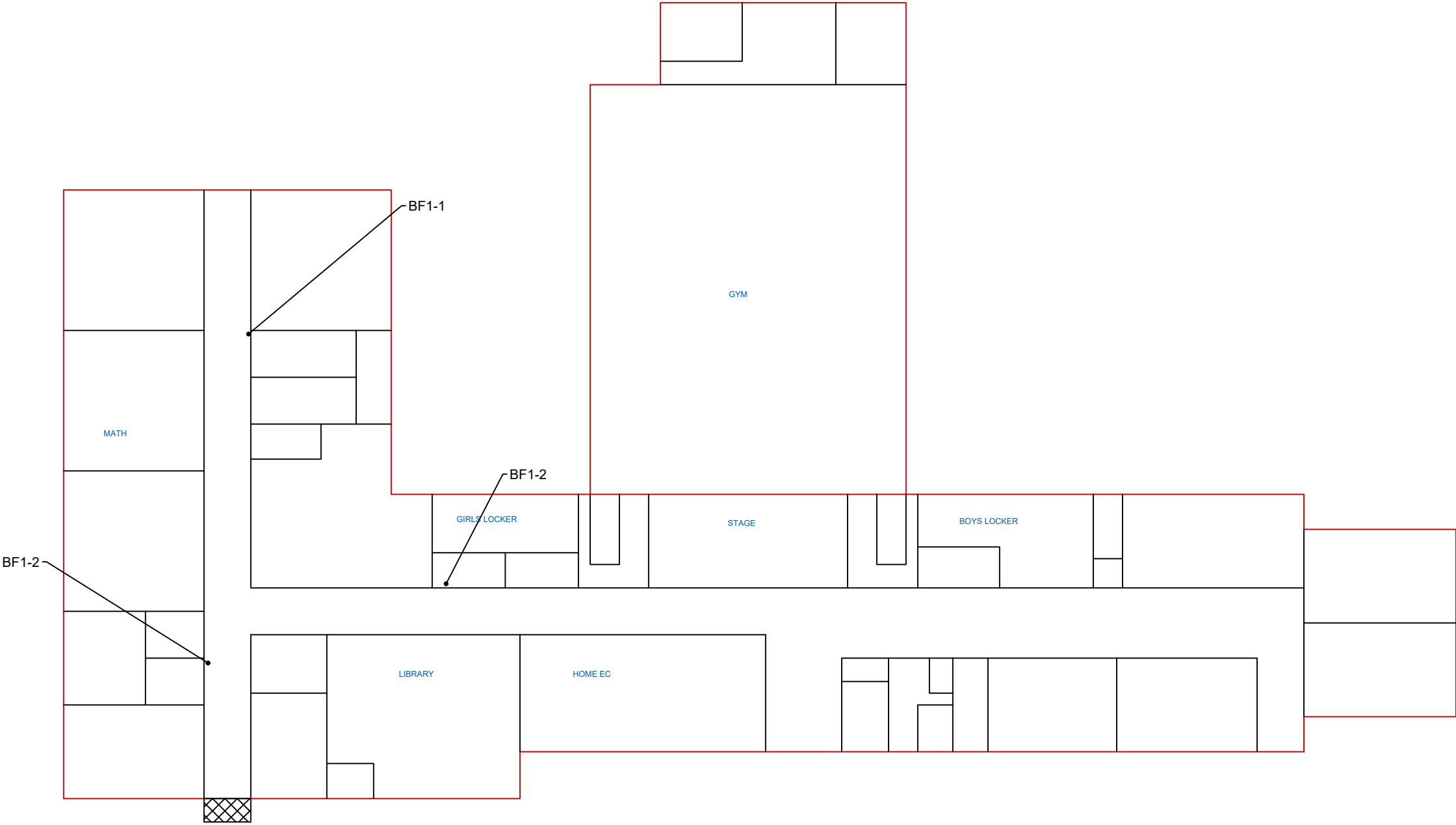
LEGEND



THIS SYMBOL INDICATES THE APPROXIMATE LOCATION OF ASSUMED ACM TRANSITE SOFFIT

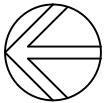
SEE 1992 ATC SURVEY FOR SAMPLE INFORMATION FOR WALLS AND CEILINGS

BLOCK FILLER SAMPLES (BF1-1, BF1-2, BF1-3)
NON-DETECT FOR ASBESTOS



NOTE:
THIS DOCUMENT IS FOR THE EXCLUSIVE USE OF WIGGINS SCHOOL DISTRICT AND SHOULD NOT BE USED AS A BIDDING DOCUMENT. INFORMATION ON MATERIALS AND LOCATIONS BASED UPON PRIOR REINSPECTION (R.E.M.S., 2007) AND 1992 SURVEY (ATC).

MAIN FLOOR PLAN
SCALE: NONE



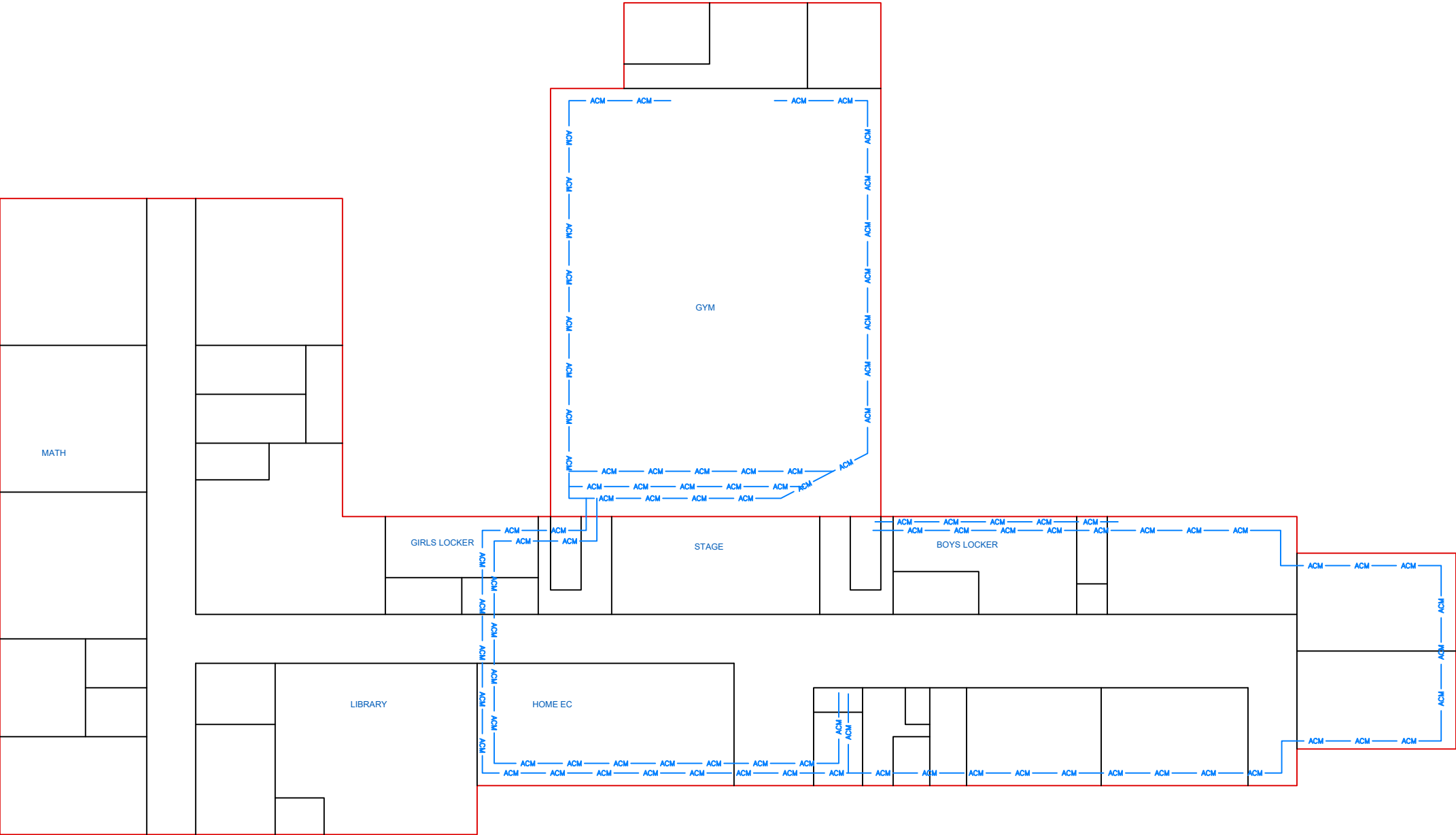
CEILINGS & WALLS

NOTE:
THIS DRAWING MUST BE PRINTED IN COLOR TO SHOW ALL INFORMATION

RLH engineering, inc.
Facility Planning, Engineering, & Environmental Services
541 East Garden Drive, Unit S

WIGGINS SCHOOL DISTRICT
WIGGINS JR/SR HIGH SCHOOL
ASBESTOS MANAGEMENT PLAN

DRAWING #: 2
SHEET TITLE: ASBESTOS MANAGEMENT PLAN
RLH Project #: 16072
DATE: DECEMBER 2016
CAD File: \\...\\16072\\CA
WIGGINS HS_MP.DWG

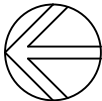


LEGEND

— ACM — THIS SYMBOL INDICATES THE APPROXIMATE LOCATION OF TSI ON PIPING

NOTE:
THIS DOCUMENT IS FOR THE EXCLUSIVE USE OF WIGGINS SCHOOL DISTRICT AND SHOULD NOT BE USED AS A BIDDING DOCUMENT. INFORMATION ON MATERIALS AND LOCATIONS BASED UPON PRIOR REINSPECTION (R.E.M.S., 2007) AND 1992 SURVEY (ATC).

MAIN FLOOR PLAN
SCALE: NONE



TSI & MISCELLANEOUS



November 2, 2016

Subcontract Number: NA
Laboratory Report: RES 364491-1
Project # / P.O. # 16027
Project Description: Wiggins HS

Matt Little
RLH Engineering
541 East Garden Drive, Unit S
Windsor CO 80550

Dear Customer,

Reservoirs Environmental, Inc. is an analytical laboratory accredited for the analysis of Industrial Hygiene and Environmental matrices by the National Voluntary Laboratory Accreditation Program (NVLAP), Lab Code 101896-0 for Transmission Electron Microscopy (TEM) and Polarized Light Microscopy (PLM) analysis and the American Industrial Hygiene Association (AIHA), Lab ID 101533 - Accreditation Certificate #480 for Phase Contrast Microscopy (PCM) analysis. This laboratory is currently proficient in both Proficiency Testing and PAT programs respectively.

Reservoirs Environmental, Inc. has analyzed the following samples for asbestos content as per your request. The analysis has been completed in general accordance with the appropriate methodology as stated in the attached analysis table. The results have been submitted to your office.

RES 364491-1 is the job number assigned to this study. This report is considered highly confidential and the sole property of the customer. Reservoirs Environmental, Inc. will not discuss any part of this study with personnel other than those of the client. The results described in this report only apply to the samples analyzed. This report must not be used to claim endorsement of products or analytical results by NVLAP or any agency of the U.S. Government. This report shall not be reproduced except in full, without written approval from Reservoirs Environmental, Inc. Samples will be disposed of after sixty days unless longer storage is requested. If you have any questions about this report, please feel free to call 303-964-1986.

Sincerely,

Sabrina Martinez
Sabrina Martinez for

Jeanne Spencer
President

RESERVOIRS ENVIRONMENTAL INC.

NVLAP Lab Code 101896-0

TABLE: PLM BULK ANALYSIS, PERCENTAGE COMPOSITION BY VOLUME

RES Job Number: RES 364491-1
Client: RLH Engineering
Client Project Number / P.O.: 16027
Client Project Description: Wiggins HS
Date Samples Received: November 02, 2016
Method: EPA 600/R-93/116 - Short Report, Bulk
Turnaround: 24 Hour
Date Samples Analyzed: November 02, 2016

ND=None Detected
TR=Trace, <1% Visual Estimate
Trem/Act=Tremolite/Actinolite

Client Sample Number	Lab ID Number	L A Y E R	Physical Description	Sub Part (%)	Asbestos Content		
					Mineral	Visual Estimate (%)	Non-Fibrous Components (%)
16027-102116-BF-1-1	EM 1739020	A	Gray cinder block w/ white paint	100		ND	100
16027-102116-BF-1-2	EM 1739021	A	Gray cinder block w/ white paint	100		ND	100
16027-102116-BF-1-3	EM 1739022	A	Gray cinder block w/ white paint	100		ND	100

TEM Analysis recommended for organically bound material (i.e. floor tile) if PLM results are <1%.

Michael Scales
Michael Scales

Analyst / Data QA



Reservoirs Environmental, Inc.

5801 Logan St. Denver, CO 80216 • Ph: 303-554-1888 • Fax: 303-477-4275 • Toll Free 866-RES-ENV

Pager: 303-505-2998

RES 364491

Page 1 of 1

Due Date: 11-3-16

Due Time: 11:30 AM

INVOICE TO: (IF DIFFERENT)

Company:	Address:	Contact:
Address:	Address:	Phone:
Address:	Address:	Fax:
Address:	Address:	Cell/Mobile:
Address:	Address:	Project/Invoicing Email Address:

CONTACT INFORMATION:

SKittley; RLH@RLHEngineering.com

ASBESTOS LABORATORY HOURS: Weekdays: 7am - 7pm
PLM / PCM / TEM RUSH (Same Day) ☒ PRIORITY (Next Day) STANDARD
(Rush PCM = 2hr, TEM = 5hr.)

CHEMISTRY LABORATORY HOURS: Weekdays: 8am - 5pm
Metals / Dust RUSH 24 hr. 3-5 Day

RCRA 8 / Metals & Welding Fume Scan / TCLP RUSH 5 day 10 day

Organics 24 hr. 3 day 5 Day

MICROBIOLOGY LABORATORY HOURS: Weekdays: 9am - 6pm
E.coli O157:H7, Coliforms, S aureus 24 hr. 2 Day 3-5 Day

Salmonella, Listeria, E.coli, APC 48 hr. 3-5 Day

Yeast: Mold 3-5 Day 7 Day

Turnaround times establish a laboratory priority, subject to laboratory volume and are not guaranteed. Additional fees apply for afterhours, weekends and holidays.

Special Instructions:

Client sample ID number (Sample ID's must be unique)

1 16027-102116-13F1-1

2

3

4

5

6

7

8

9

10

REQUESTED ANALYSIS

PLM - Short report, Long report, Point Count	TM - AHERA, Level II, 7402, ISO, +/- Quant	Semi-quant, Micro-quant, ISO-Indirect Preps	PCM - 7400A, 7400B, GSHA	DUST - Total, Respirable	METALS - Analyte(s)	RCRA 8, TCLP, Welding Fume, Metals Scan	ORGANICS - STEX, MTBE, 8260, GRO, METH	Salmonella: +/-	E.coli O157:H7: +/-	Listeria: +/-	Aerobic Plate Count: +/- or Quantification	Coliforms: +/- or Quantification	S aureus: +/- or Quantification	Yeast/Mold: +/- or Quantification	OTHER -
--	--	---	--------------------------	--------------------------	---------------------	---	--	-----------------	---------------------	---------------	--	----------------------------------	---------------------------------	-----------------------------------	---------

VALID MATRIX CODES

Air = A	Bulk = B
Dust = D	Paint = P
Soil = S	Wipe = W
Swab = SW	F = Food
Drinking Water = DW	Waste Water = WW
O = Other	

ASTM E1752 approved wipe media only

LAB NOTES:

Sample Volume	Matrix Code	Date Collected	Time Collected	EM Number (Laboratory Use Only)
				1739220
				1 21
				2 22

Number of samples received: 3

(Additional samples shall be listed on attached long form.)

NOTE: RETLAB analyzes incoming samples based upon information received and will not be responsible for errors or omissions in calculations resulting from the inaccuracy of original data. By signing client/company representative agrees that submission of the following samples for requested analysis as indicated on this Chain of Custody shall constitute an analytical services agreement with payment terms of NET 30 days. Failure to comply with payment terms may result in a 1.5% monthly interest surcharge.

Relinquished By: RLH

Received By: RLH

Results:

Date/Time: 11/2/16 1:50

Carrier: RLH

Page Phone Email Fax

Date/Time: 11-2-16 11:30 AM

Page Phone Email Fax

Page Phone Email Fax

Sample Condition: On Ice Sealed Inlet

Temp. (F) Yes / No Yes / No

Time Time Time Time

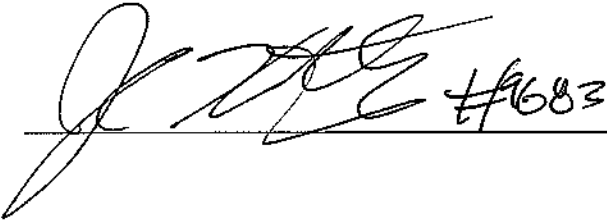
October 2016

LEA: Wiggins School District
BUILDING: Wiggins Vocational Agriculture Building
320 Chapman Street
Wiggins, CO 80654

ASSESSMENT OF MATERIALS

HOMOGENEOUS MATERIAL	LOCATION	FRIAB	ACCESS	CONDITION	AHERA CLASS	REASONS FOR CLASSIFICATION	2016 REINSPECTION
12"x12" Floor Tile – Cream, Tan, Brown (Mastic is Assumed ACM)	Boys Restroom	NF	LOW	GOOD	5	Non-friable material in good condition	Minor cracking noted at doorway. Otherwise, material in good condition
12"x12" Floor Tile – Cream and Gray (Mastic is Assumed ACM)	Girls Restroom	NF	LOW	GOOD	5	Non-friable material in good condition	Minor cracking noted at doorway. Otherwise, material in good condition
Transite Chalkboard	West (Band) Classroom	NF	LOW	GOOD	5	Non-friable material in good condition	Material in good condition
9"x9" Floor Tile – Light Tan with Brown Streaks (Mastic is ACM)	East and West Classrooms	NF	LOW	GOOD	5	Non-friable material in good condition	Minor cracking in East Classroom. Under carpet in West (Band) Classroom
9"x9" Floor Tile – Brown with Cream Streaks (Mastic is non-ACM)	Office	NF	LOW	GOOD	5	Non-friable material in good condition	Material in good condition

2016 Inspection: State of Colorado Asbestos Building Inspector Name and Signature:

 #683

Inspection Date:

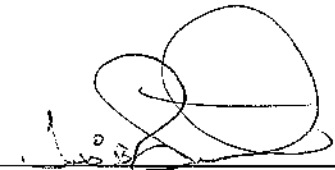
10/14/16

AHERA assessment category:

1 = Damaged or significantly damaged TSI ACBM, 2 = Damaged friable surfacing ACBM, 3 = Significantly damaged friable surfacing ACBM
4 = Damaged or significantly damaged friable miscellaneous ACBM, 5 = ACBM with potential for damage, 6 = ACSM with potential for significant damage
7 = Any remaining friable ACBM or friable suspected ACBM, X = not applicable (material is non ACBM or non-friable surfacing or miscellaneous material)
FRIABILITY: F = friable, NF = non-friable

HOMOGENEOUS AREA NUMBER EACH LOCATION	PREVENTIVE MEASURES AND RESPONSE ACTIONS SCHEDULED		SCHEDULE		2016 REINSPECTION
	Preventive measure, response actions, and initial/additional cleanings	Begin		Complete	
12"x12" Floor Tile – Cream, Tan, Brown (Mastic is Assumed ACM)	PM: See original AHERA plan for Preventative Measures prescribed	1989		Continuous	PM: Continue waxing tile to maintain material in good condition
	RA: See original AHERA plan for Recommended Actions prescribed				RA: None, unless disturbance by renovation/demolition anticipated. Sampling of material should be conducted to verify presence of ACM. Perform abatement if necessary.
12"x12" Floor Tile – Cream and Gray (Mastic is Assumed ACM)	PM: See original AHERA plan for Preventative Measures prescribed	1989		Continuous	PM: Continue waxing tile to maintain material in good condition
	RA: See original AHERA plan for Recommended Actions prescribed				RA: None, unless disturbance by renovation/demolition anticipated. Sampling of material should be conducted to verify presence of ACM. Perform abatement if necessary.
Transite Chalkboard	PM: See original AHERA plan for Preventative Measures prescribed	1989		Continuous	PM: Avoid damage to chalkboard
9"x9" Floor Tile – Light Tan with Brown Streaks (Mastic is ACM)	RA: See original AHERA plan for Recommended Actions prescribed	1989		Continuous	RA: None
	PM: See original AHERA plan for Preventative Measures prescribed				PM: Continue waxing tile to maintain material in good condition
9"x9" Floor Tile – Brown with Cream Streaks (Mastic is non-ACM)	RA: See original AHERA plan for Recommended Actions prescribed	1989		Continuous	RA: None, unless disturbance by renovation/demolition anticipated. Sampling of material should be conducted to verify presence of ACM. Perform abatement if necessary.
	PM: See original AHERA plan for Preventative Measures prescribed				PM: Continue waxing tile to maintain material in good condition
	RA: See original AHERA plan for Recommended Actions prescribed				RA: None, unless disturbance by renovation/demolition anticipated. Sampling of material should be conducted to verify presence of ACM. Perform abatement if necessary.

2016 Inspection: State of Colorado Asbestos Management Planner Name and Signature

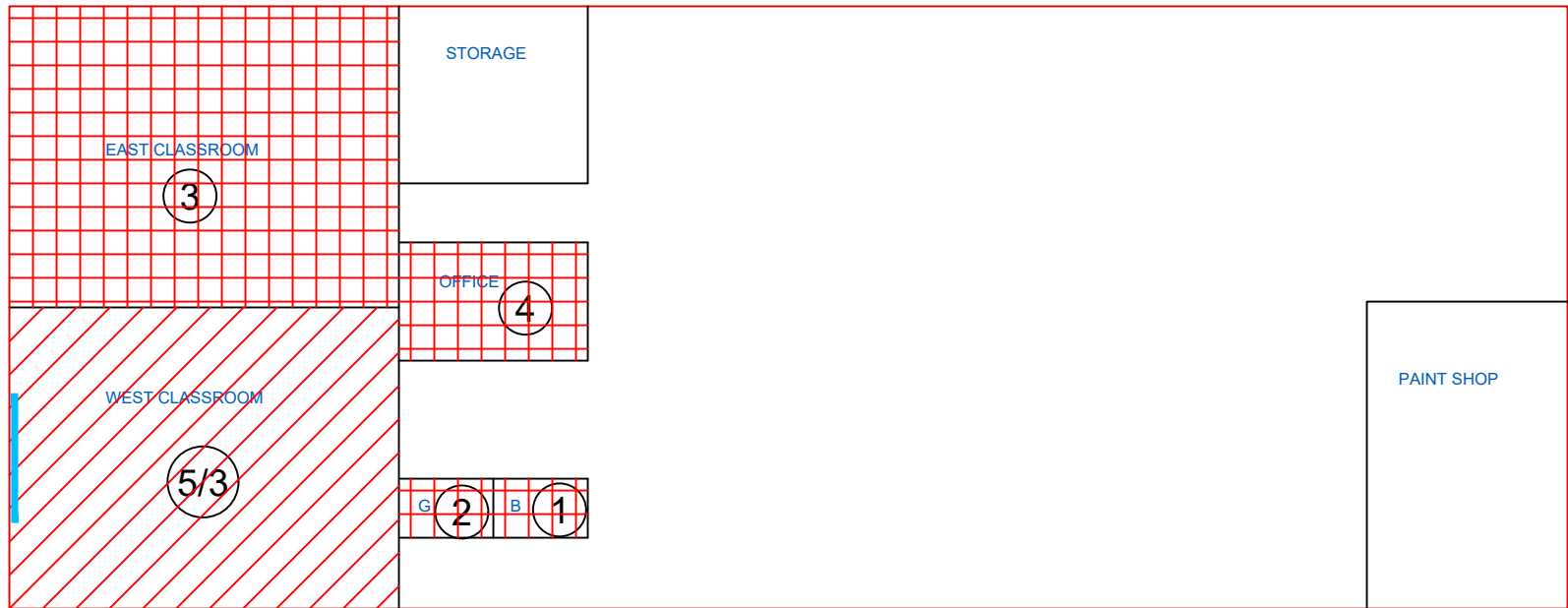


Inspection Date:

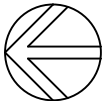
12.1.17

Remaining ACBM

NOTE:
THIS DOCUMENT IS FOR THE EXCLUSIVE USE
OF WIGGINS SCHOOL DISTRICT AND SHOULD
NOT BE USED AS A BIDDING DOCUMENT.
INFORMATION ON MATERIALS AND
LOCATIONS BASED UPON PRIOR
REINSPECTION (R.E.M.S., 2007) AND 1992
SURVEY (ATC).



MAIN FLOOR PLAN
SCALE: NONE



FLOORS

LEGEND



THIS SYMBOL INDICATES THE APPROXIMATE LOCATION
OF ACM TILE AND/OR ACM MASTIC



THIS SYMBOL INDICATES THE APPROXIMATE LOCATION
OF CARPET OR OTHER FLOORING OVER ACM TILE
AND/OR ACM MASTIC

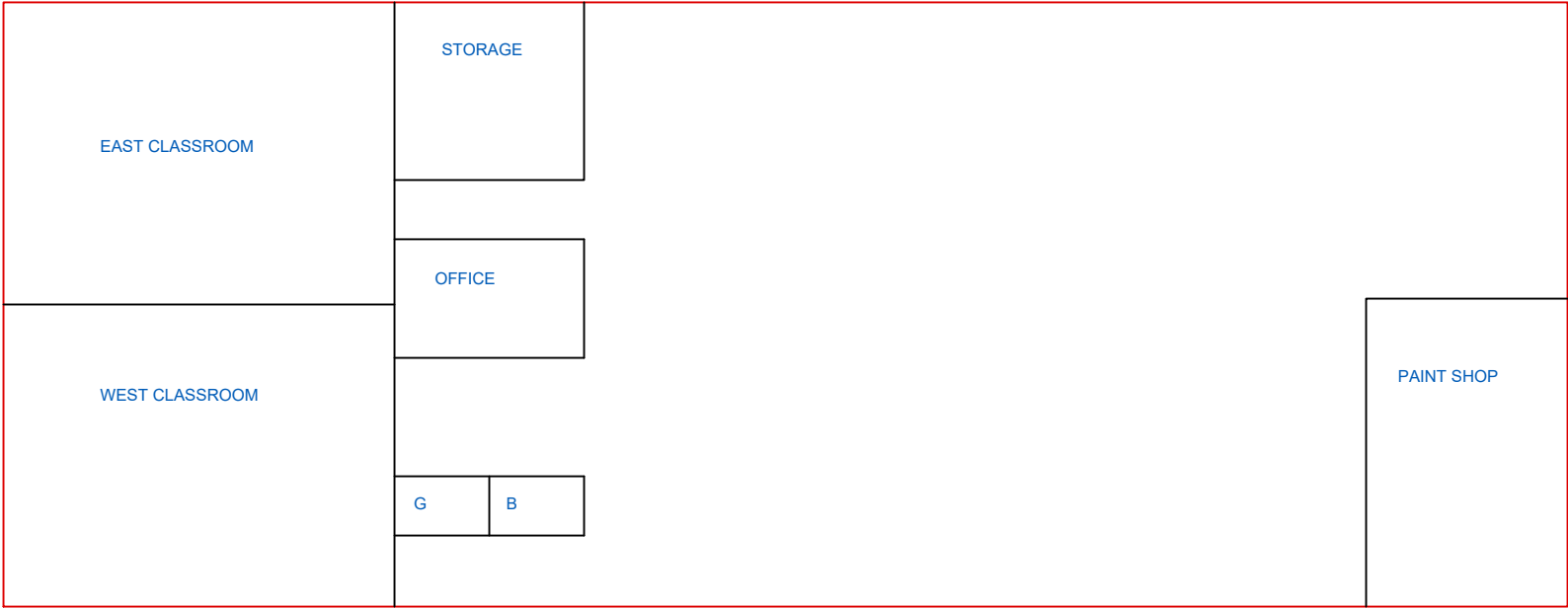
WIGGINS SCHOOL DISTRICT
WIGGINS VO AG BUILDING
ASBESTOS MANAGEMENT PLAN

DRAWING #: 1
SHEET TITLE: ASBESTOS
MANAGEMENT PLAN
RLH Project #: 16072
DATE: DECEMBER 2016
CAD File: \\...\\16072\\CA
WIGGINS VOAG_MP.dwg

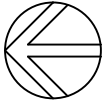
RLH engineering, inc.
Facility Planning, Engineering, & Environmental Services
541 East Garden Drive, Unit S

NOTE:
THIS DRAWING MUST BE
PRINTED IN COLOR TO
SHOW ALL INFORMATION

NOTE:
THIS DOCUMENT IS FOR THE EXCLUSIVE USE
OF WIGGINS SCHOOL DISTRICT AND SHOULD
NOT BE USED AS A BIDDING DOCUMENT.
INFORMATION ON MATERIALS AND
LOCATIONS BASED UPON PRIOR
REINSPECTION (R.E.M.S., 2007) AND 1992
SURVEY (ATC).



MAIN FLOOR PLAN
SCALE: NONE



CEILINGS & WALLS

WIGGINS SCHOOL DISTRICT
WIGGINS VO AG BUILDING
ASBESTOS MANAGEMENT PLAN

DRAWING #: 2
SHEET TITLE: ASBESTOS
MANAGEMENT PLAN
RLH Project #: 16072
DATE: DECEMBER 2016
CAD File: \\...\\16072\\CA
WIGGINS VOAG_MP.dwg

RLH engineering, inc.
Facility Planning, Engineering, & Environmental Services
541 East Garden Drive, Unit S

NOTE:
THIS DRAWING MUST BE
PRINTED IN COLOR TO
SHOW ALL INFORMATION

NOTE:
THIS DRAWING MUST BE
PRINTED IN COLOR TO
SHOW ALL INFORMATION

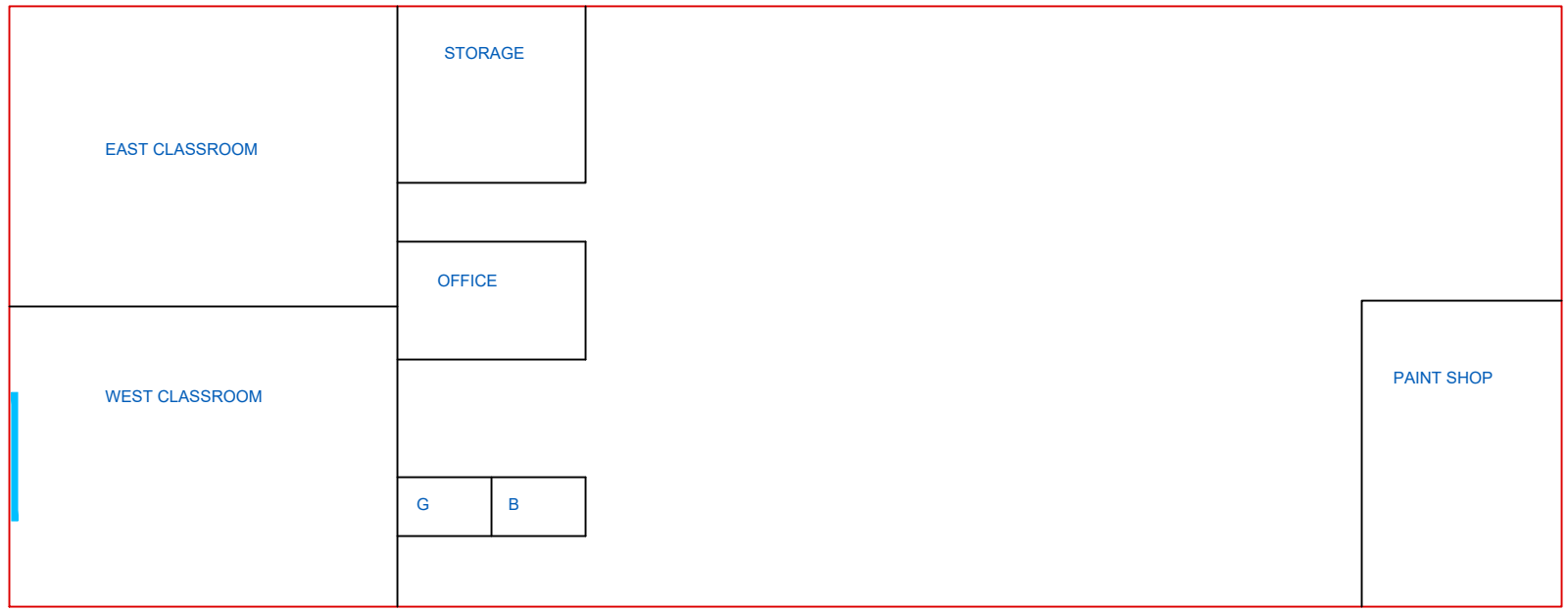
RLH engineering, inc.
Facility Planning, Engineering, & Environmental Services
541 East Garden Drive, Unit S

WIGGINS SCHOOL DISTRICT
WIGGINS VO AG BUILDING
ASBESTOS MANAGEMENT PLAN

DRAWING #: 3
SHEET TITLE: ASBESTOS
MANAGEMENT PLAN
RLH Project #: 16072
DATE: DECEMBER 2016
CAD File: \\...\\16072\\CA
WIGGINS VOAG_MP.dwg

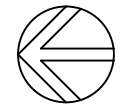
LEGEND

THIS SYMBOL INDICATES THE APPROXIMATE LOCATION
OF ACM TRANSITE CHALKBOARD



NOTE:
THIS DOCUMENT IS FOR THE EXCLUSIVE USE
OF WIGGINS SCHOOL DISTRICT AND SHOULD
NOT BE USED AS A BIDDING DOCUMENT.
INFORMATION ON MATERIALS AND
LOCATIONS BASED UPON PRIOR
REINSPECTION (R.E.M.S., 2007) AND 1992
SURVEY (ATC).

MAIN FLOOR PLAN
SCALE: NONE



TSI & MISCELLANEOUS



Colorado Department
of Public Health
and Environment

ASBESTOS CONSULTING FIRM

This certifies that

RLH Engineering, Inc.

Registration No.: ACF- 14755

has met the registration requirements of 25-7-507, C.R.S. and the Air Quality Control Commission Regulation No. 8, Part B, and is hereby authorized to perform asbestos consulting activities as required under Regulation No. 8, Part B, in the state of Colorado.

Issued: January 27, 2016

Expires: January 30, 2017

[Signature]
Authorized APCD Representative

SEAL



Colorado Department
of Public Health
and Environment

ASBESTOS CERTIFICATION*

This certifies that

Jeff Kirtley

Certification No.: 9683

has met the requirements of 25-7-507, C.R.S. and Air Quality Control
Commission Regulation No. 8, Part B, and is hereby certified by the
state of Colorado in the following discipline:

Building Inspector*

Issued: November 12, 2015

Expires: November 12, 2016

** This certificate is valid only with the possession of a
current Division-approved training course certification
in the discipline specified above.*


Authorized APCD Representative
SEAL

ETC

Environmental Training & Consulting

2761 West Oxford Avenue #7
Englewood, CO 80110
(303)781-0422

This course meets the
requirements of
AQCC Reg.#8

CERTIFIES THAT

JEFF KIRTLEY

has successfully completed the

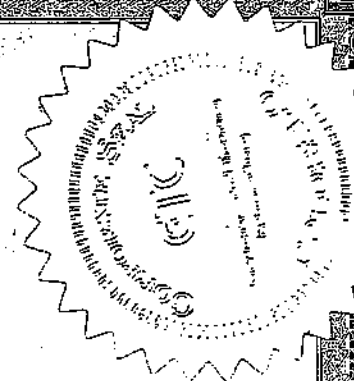
EPA-APPROVED AHERA ANNUAL REFRESHER COURSE for INSPECTOR

and passed the required examination in that discipline

This course is EPA-approved under Section 206 of the Toxic Substance Control Act (TSCA)

Course Date 11/04/15
No. of hours 4
Certificate No. DR110415 - 20AI
Expires 11/04/16


Authorized Signature





Colorado Department
of Public Health
and Environment

ASBESTOS CERTIFICATION*

This certifies that

Travis B. Guerette

Certification No.: 4118

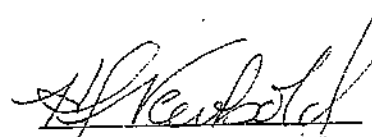
has met the requirements of 25-7-507, C.R.S. and Air Quality Control
Commission Regulation No. 8, Part B, and is hereby certified by the
state of Colorado in the following discipline:

Inspector/Management Planner*

Issued: May 25, 2016

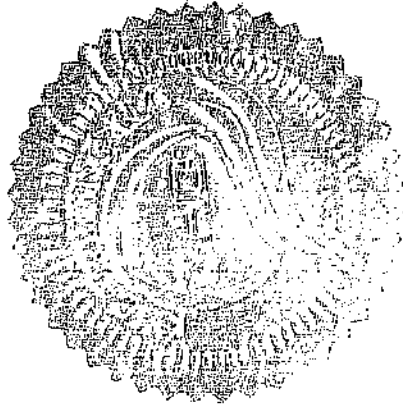
Expires: May 25, 2017

** This certificate is valid only with the possession of a
current Division-approved training course certification
in the discipline specified above.*


Authorized APCD Representative
SEAL



1775 West 55th Avenue
Denver, CO 80221
303.410.4941
trainingchc.com



Certifies that

Travis B. Guerette

4118

*Has Successfully Completed the EPA Approved Annual Asbestos Refresher Training Course
Under Section 206 of the Toxic Substance Control Act (TSCA), Title II.*

Building Inspector / Management Planner

Course Date: January 22, 2016
Certificate No.: R16-027-AIMP-CO
No. of Hours: 8
Expiration Date: January 22, 2017
Certification not valid without watermark

Mike Benedetto - Instructor

Danaya Benedetto

Danaya Benedetto- Training Program Manager