



BROOKFIELD PUBLIC SCHOOLS

PUBLIC FORUM #1

NEW ELEMENTARY SCHOOL
AT THE HUCKLEBERRY HILL SITE

Tecton
ARCHITECTS

09.26.19

BROOKFIELD PUBLIC SCHOOLS / AGENDA

1. INTRODUCTIONS
2. PROJECT RECAP/BACKGROUND
3. DESIGN PROCESS/PROJECT SCHEDULE
4. RECENT ACTIVITIES
5. KEY ASPECTS TO INTEGRATE
6. ENVISIONING YOUR SCHOOL
7. SUSTAINABILITY
8. PUBLIC COMMENT - LET US HEAR IT

INTRODUCTIONS / A COLLABORATIVE APPROACH

MUNICIPAL BUILDING COMMITTEE

Mr. Paul Checco

Municipal Building Committee
Chairperson

Mr. Josh Flowers

Municipal Building Committee
Member

KEY PARTICIPANTS

Dr. John W. Barile

Superintendent of Schools

Mrs. Colette Sturm

Board of Education

Teachers and Faculty

Principals
Grade Level Teachers
Music & Arts
Media Specialists
Health Care
Physical Education

Parks & Recreation

**Transportation
Development Services Team**

Mr. Steve Dunn

First Selectman

DESIGN TEAM

Tecton Architects

Architecture & Programming

Jeff Wyszynski, AIA

Eddie Widofsky, AIA, LEED AP BD+C, MCPPO

Antonia Ciaverella, LEED AP BD+C, WELL AP, Fitwel

Milone & MacBroom

Site, Civil, Landscape,
Planning

Darin Overton, PE

CES

MEP Engineering

Derek Bride

Szewczak Associates

Structural Engineering

Peter Celella, PE

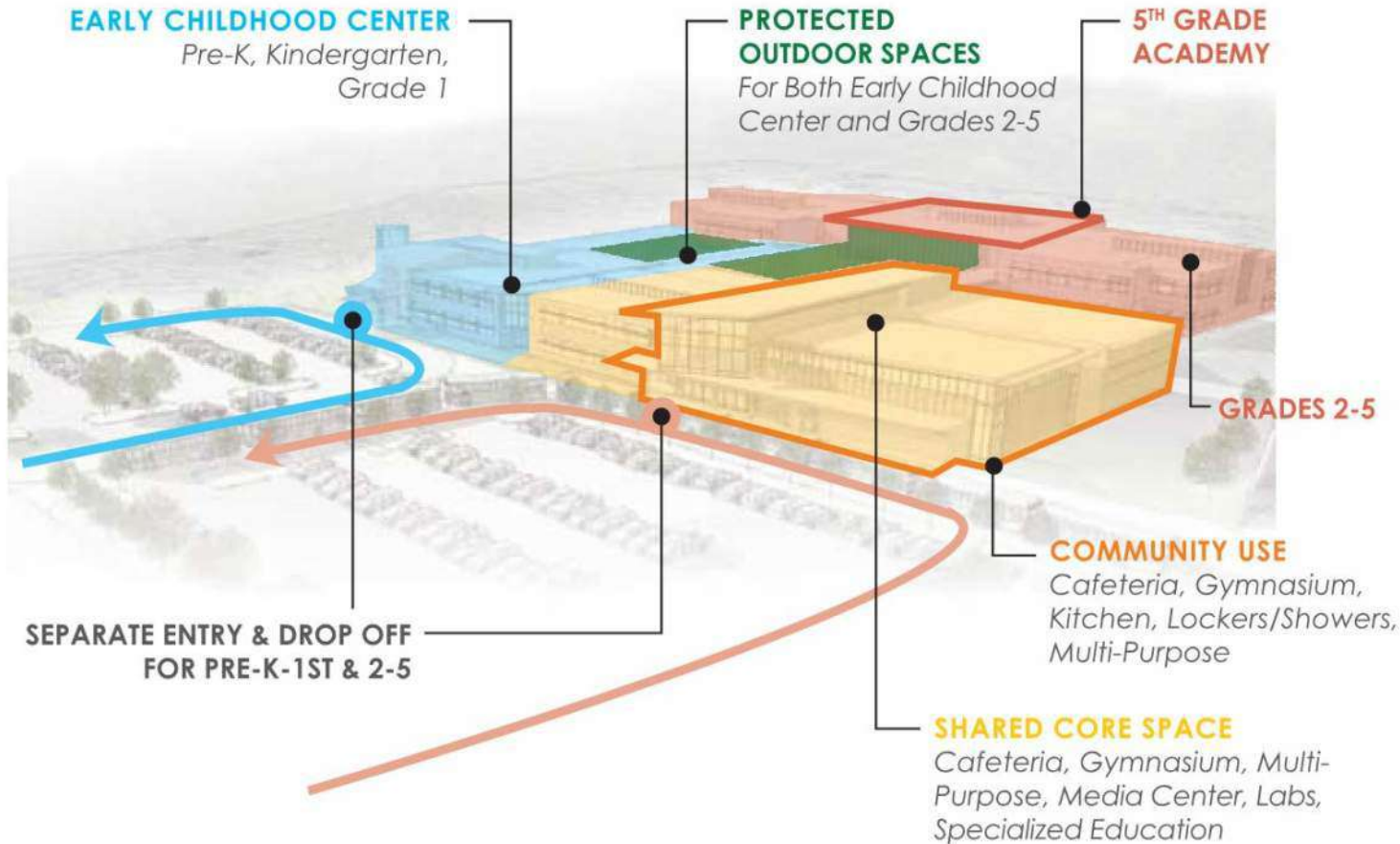


PROJECT RECAP

PROJECT RECAP / ORIGINAL SCHEDULE



PROJECT RECAP / ORIGINAL CONCEPT



PROJECT RECAP / ORIGINAL CONCEPT



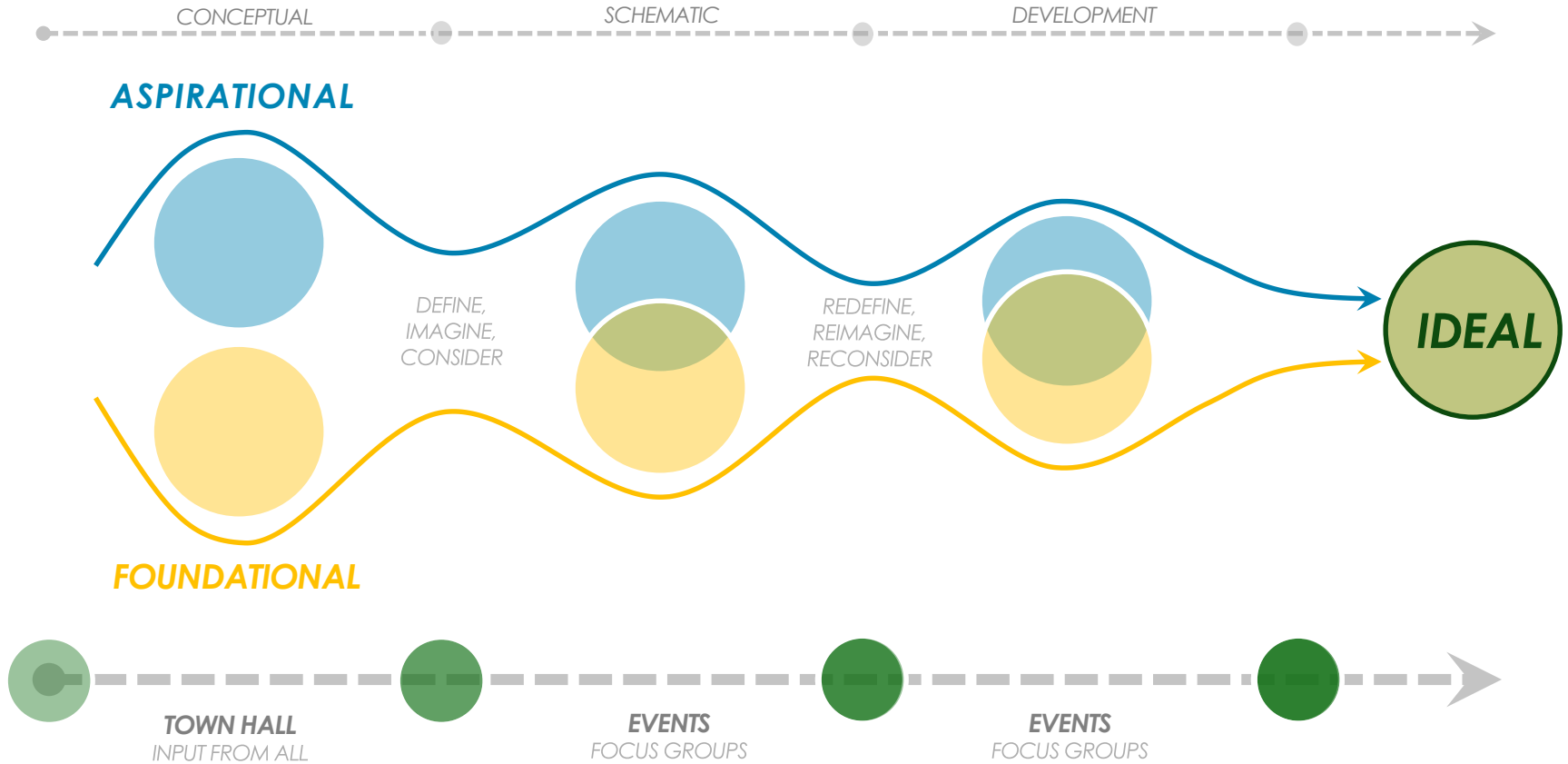
Keys to Concept

- Two Schools – Early Learning Center & Upper Elementary
- Establish neighborhoods
- Flexible & Innovative
- Supports Student Centered Learning, Project Based Learning, and Personalization
- Separate entry and drop off for PK&K
- Shared core spaces – Cafeteria, Multipurpose, Media, Gymnasium, Music
- Creation of 5th Grade Academy
- Protected exterior courtyards for play, activity and learning
- Ability to expand for universal PK & K
- Layout promotes transitions between – PK/K/1 to Grades 2,3,4 to 5th Grade Academy

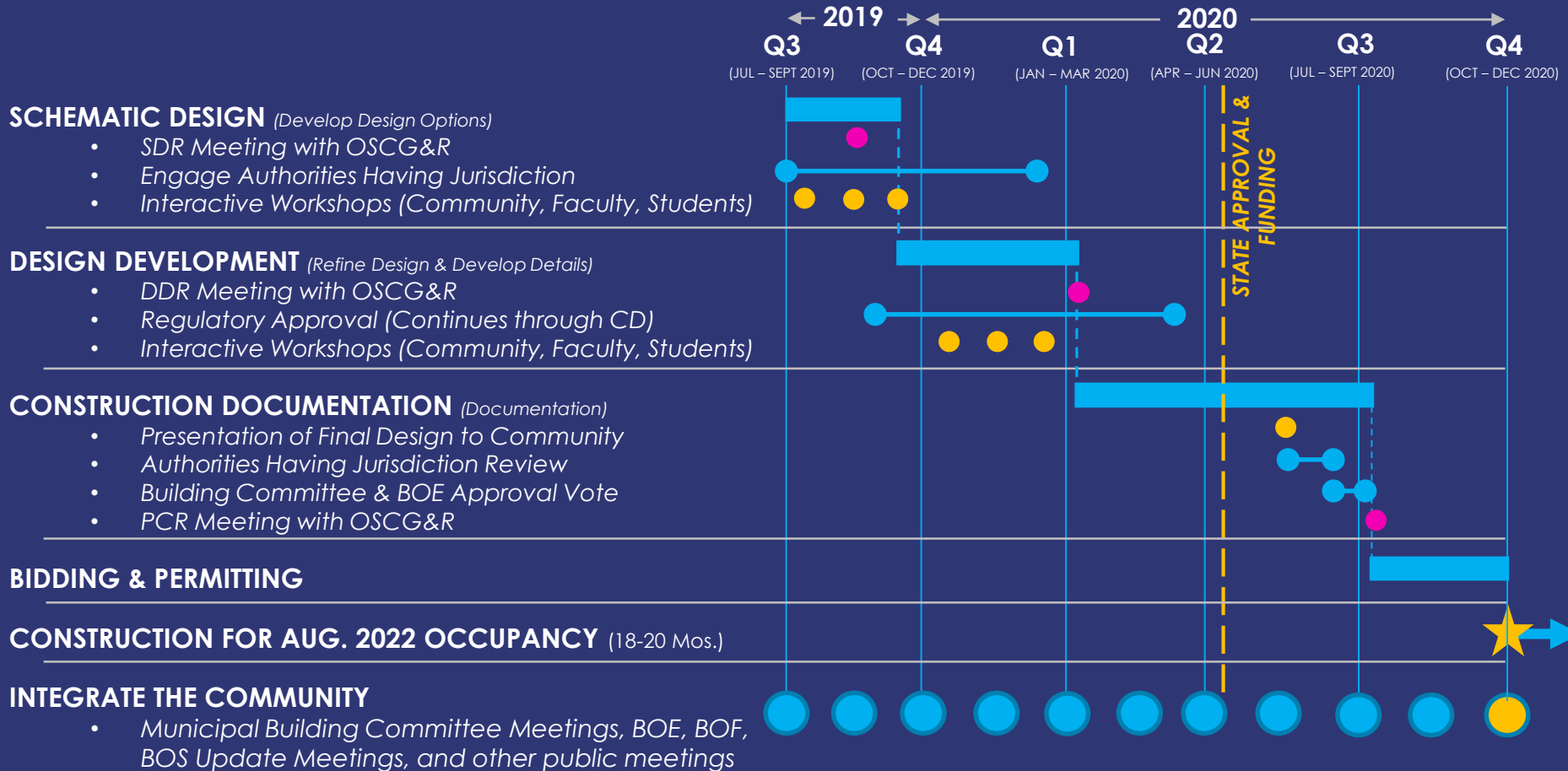


DESIGN PROCESS,
SCHEDULE

DEVELOPING THE VISION TOGETHER



PROPOSED MILESTONE SCHEDULE / DESIGN PROCESS



An aerial photograph of a large, modern building complex, possibly a university or corporate campus. The building features multiple interconnected wings, some with glass facades, and a central courtyard area. The entire image is overlaid with a semi-transparent blue filter. The text "RECENT ACTIVITIES" is centered in white, bold, sans-serif font.

RECENT ACTIVITIES

RECENT ACTIVITIES / ON-GOING WORK

- **DUE DILIGENCE**
 - Site Survey
 - Geotechnical
 - Wetlands Identification And Delineation
 - Traffic
 - Utility Infrastructure (Gas & Water)
- **DEMOGRAPHIC VALIDATION & PLANNING**
- **OSCG&R**
- **SELECTION OF PARTNERS**
 - OPM (Owner’s Project Manager)
 - CM (Construction Manager)

Town of Brookfield
New Huckleberry Hill Elementary School (PK-5)
Event ID: DASM1-SCP0000002, Priority Event

Tecton Architects Project No.: BRX01AR.01
 Meeting Document Date: 6.10.19

Table of Contents:

- A. Grant Application Event Details
- B. Space Compilation Worksheet & Enrollment Projections
- C. Educational Specifications
- D. Cost Estimate
- E. SCG-P000, Lockdown Drill, Homeland Security Meetings
- F. Site Information:
 - a. SCG-053
 - b. SCG-5003
 - c. Maps
 - d. Conceptual Site Plan
 - e. Phase I (partial print)
- G. Preview Meeting Information
- H. Subsequent Information (Requested at Mtg with OSCG&R on 6.10.19 @ 10 a.m.)

Brookfield Public Schools Enrollment Projections - June 2018

Year	Birth Year	Births	K	1	2	3	4	5	6	7	8	9	10	11	12	PK	PK-12	K-12	K-1	2-4	5-8	9-12	PK-5
2017-18	2012	110	148	171	173	171	179	206	246	307	331	323	314	315	315	40	2,609	2,599	319	523	890	867	1,088
2018-19	2013	110	144	158	174	180	172	193	217	245	209	221	231	214	215	36	2,608	2,572	302	525	865	880	1,056
2019-20	2014	112	147	153	160	180	181	186	204	216	248	200	229	230	214	36	2,583	2,547	300	521	853	873	1,043
2020-21	2015	138	181	156	156	166	181	195	196	203	219	237	207	228	230	36	2,591	2,555	337	504	812	903	1,071
2021-22	2016	124	162	192	159	182	167	186	206	195	205	209	245	207	228	36	2,569	2,533	355	488	802	890	1,074
2022-23	2017	109	143	173	195	165	163	180	207	205	197	196	217	245	207	36	2,528	2,492	316	523	789	865	1,055
2023-24	2018	136	170	152	176	203	166	175	190	206	207	189	203	216	245	36	2,533	2,497	322	544	779	853	1,077
2024-25	2019	133	166	181	155	182	204	179	185	190	208	198	195	203	216	36	2,497	2,461	346	541	761	812	1,102
2025-26	2020	142	176	176	184	160	183	220	189	184	192	199	205	195	203	36	2,502	2,466	353	527	785	802	1,136
2026-27	2021	141	176	188	179	191	161	198	232	188	186	183	206	205	195	36	2,524	2,488	364	531	804	789	1,129
2027-28	2022	144	180	187	191	186	192	174	209	231	190	178	190	206	205	36	2,553	2,517	367	568	804	778	1,145

prepared by Milone & MacBroom, Inc.

RECENT ACTIVITIES / TOWN INVOLVEMENT



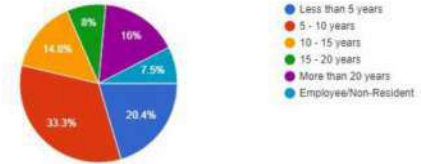
MEET WITH DST (DEVELOPMENT SERVICES TEAM)

- Board of Education
- Board of Finance
- Board of Selectmen
- Building Department
- Department of Public Works
- Economic And Community Development
- Fire Marshal
- Health Department
- Land Use Department
- Planning Commission
- Police Department
- Water Pollution Control Authority
- Zoning Commission

RECENT ACTIVITIES / PROGRAMMING AND SCHEMATIC DESIGN

- **COMMUNITY GROUP SURVEYS & INPUT**
- **SUSTAINABLE STRATEGIES**
 - CT HPBS (Equivalency of LEED Silver)
 - WELL Building
 - Resiliency
 - Net Zero
- **DEVELOP DETAILED PROGRAMMING**
 - Meet With Principals, Grade Level Teachers, Music & Arts, Media Specialists, Health Care, Physical Education, Parks & Recreation, Special Education, Transportation
 - List Each Space/Amenity, Adjust Areas, Discuss Flexibility, Review Specific Needs, Setup and Equipment
- **DESIGN CHARRETTES, ALTERNATIVE DESIGN OPTIONS**

How long have you resided in Brookfield?
412 responses



An aerial architectural rendering of a modern building complex. The building features multiple interconnected volumes with flat roofs. One central section is covered with solar panels, while another section has a green roof. The building is surrounded by landscaped grounds with trees and a winding path. The entire scene is overlaid with a semi-transparent blue filter.

KEY ASPECTS TO INTEGRATE

KEY ASPECTS TO INTEGRATE / DESIGN CONSIDERATIONS

1

BUILDING

- Schools Within A School
- Shared Core Spaces
- Thriving Neighborhoods
- The Gift Of Time
- Flexible Academic Spaces
- Multiple Venues For Public Functions:
Performances, Assemblies
- Flexible Athletic Program Spaces
- Community Use

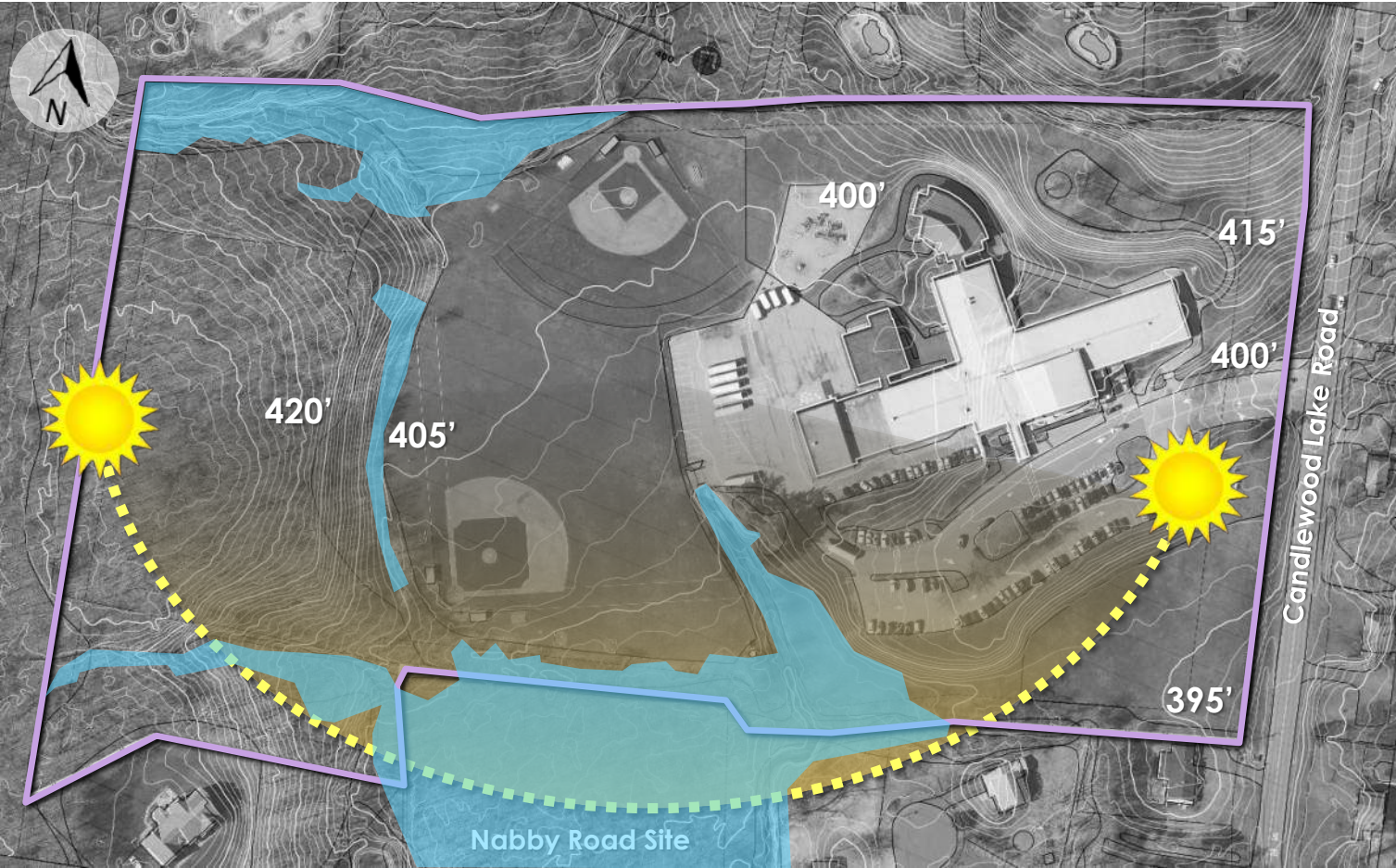
2

EXTERIOR

- Outdoor Learning Areas
- Embrace The Site
- Restore
Environments/Habitats
- Accessible And Age
Appropriate Play Areas
- Athletic/Recreational Fields
That Can Be Used By School
And By The Public

SAFETY/SECURITY & SUSTAINABILITY

ENVISIONING YOUR SCHOOL / FITTING INTO THE ENVIRONMENT



ENVISIONING YOUR SCHOOL / CONCEPTUAL BUILDING/SITE PLAN



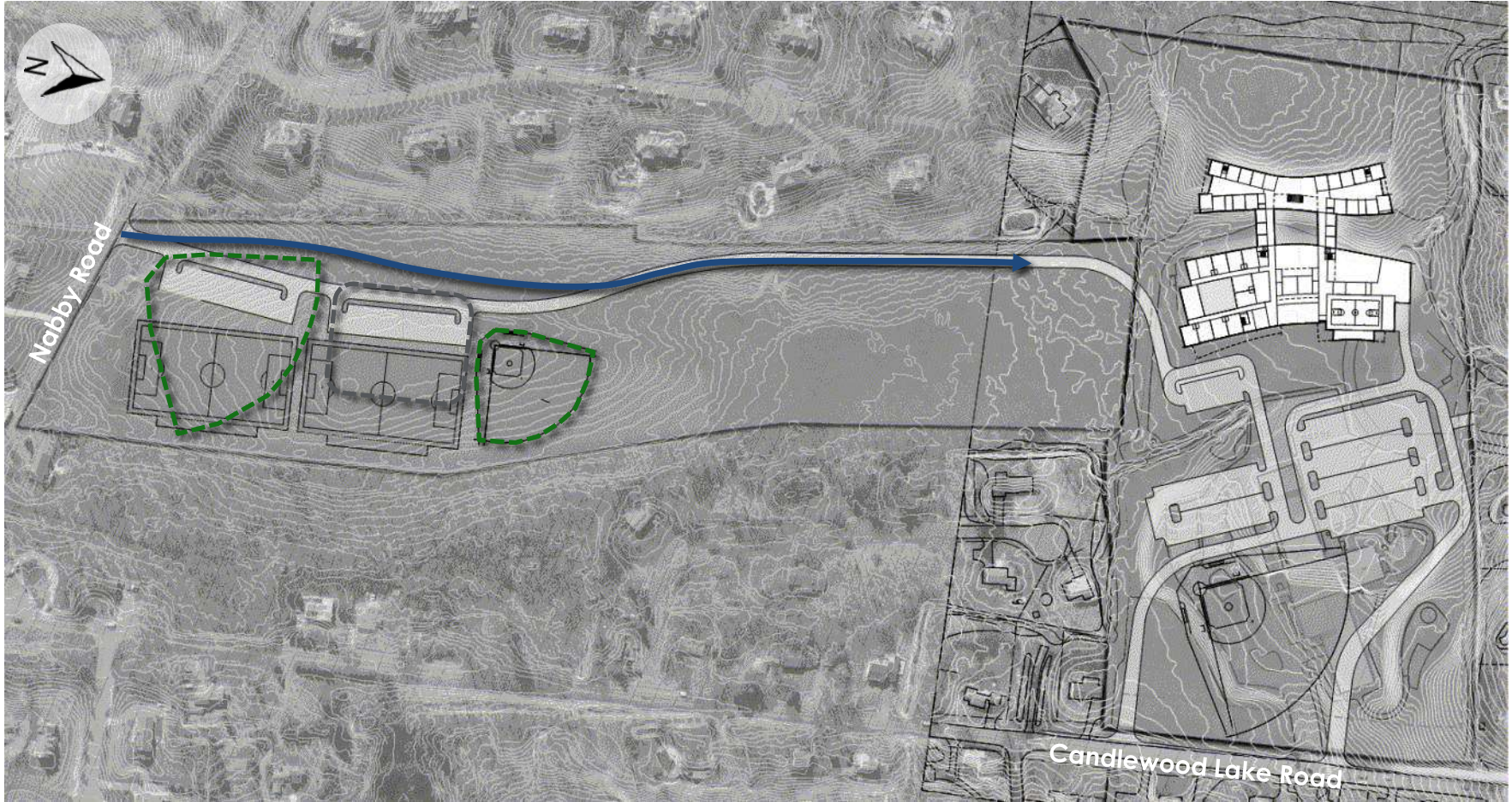
ENVISIONING YOUR SCHOOL / CONCEPTUAL BUILDING/SITE PLAN



ENVISIONING YOUR SCHOOL / NABBY ROAD CONNECTION



ENVISIONING YOUR SCHOOL / NABBY ROAD CONNECTION



ENVISIONING YOUR SCHOOL / NABBY ROAD CONNECTION



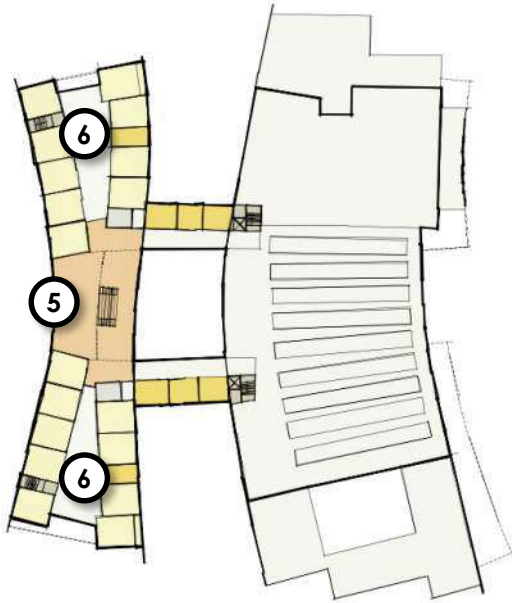
ENVISIONING YOUR SCHOOL / NABBY ROAD CONNECTION



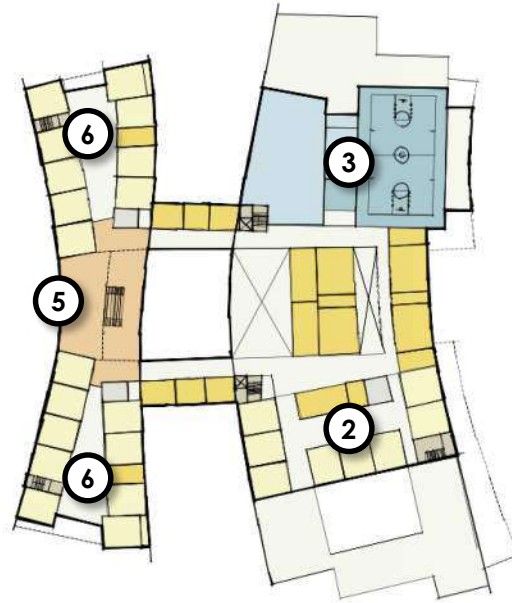
ENVISIONING YOUR SCHOOL / NABBY ROAD CONNECTION



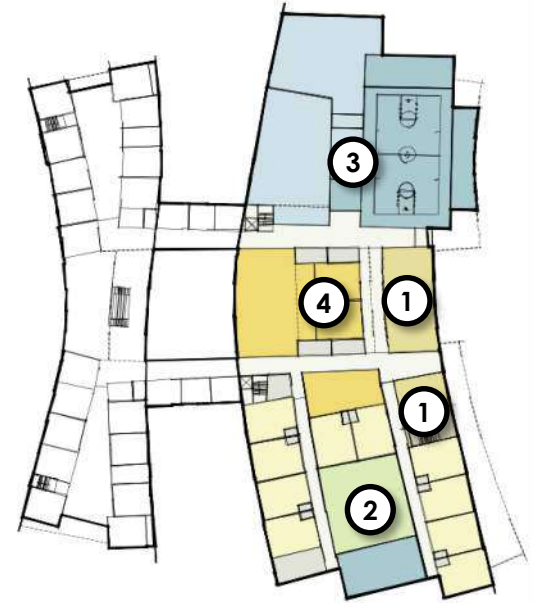
ENVISIONING YOUR SCHOOL / CONCEPTUAL PLANS



Upper Level Plan



Main Level Plan



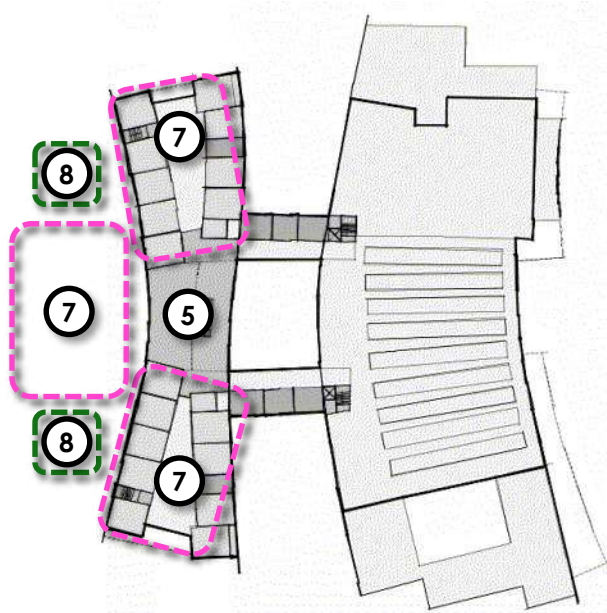
Entrance/Grade Level Plan

- ① Administration
- ② Early Childhood Center (PK-1)

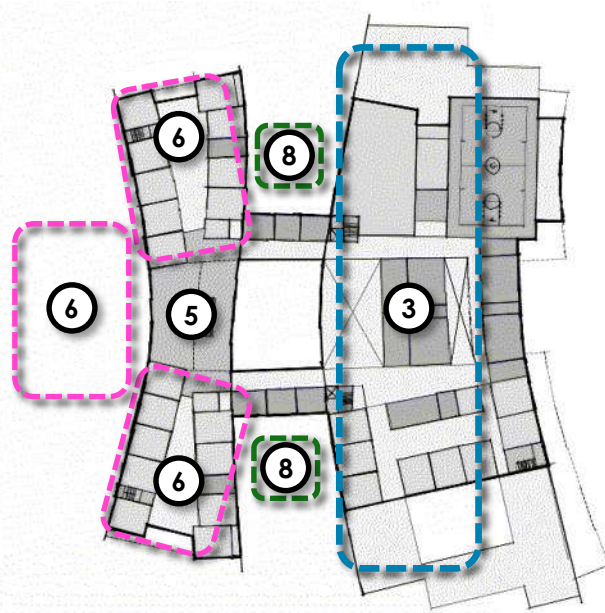
- ③ Assembly: Gym/Cafeteria
- ④ Black Box/Music/Art

- ⑤ Learning Commons
- ⑥ Grade Pods (2-5)

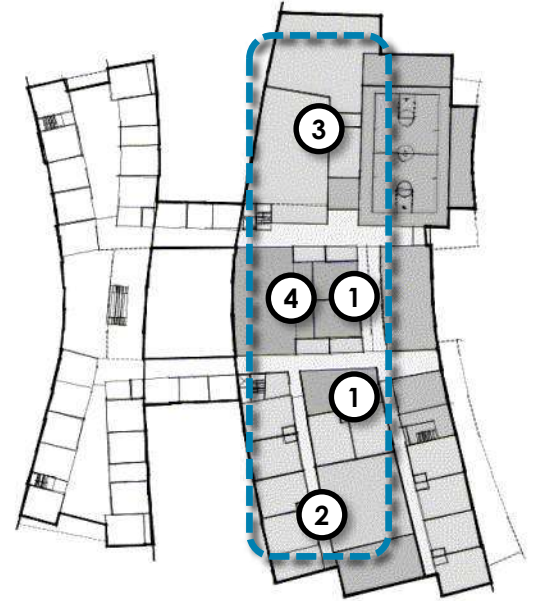
ENVISIONING YOUR SCHOOL / CONCEPTUAL PLANS



Upper Level Plan



Main Level Plan



Entrance/Grade Level Plan

- ① Administration
- ② Early Childhood (PK)
- ③ Assembly: Gym/Cafeteria

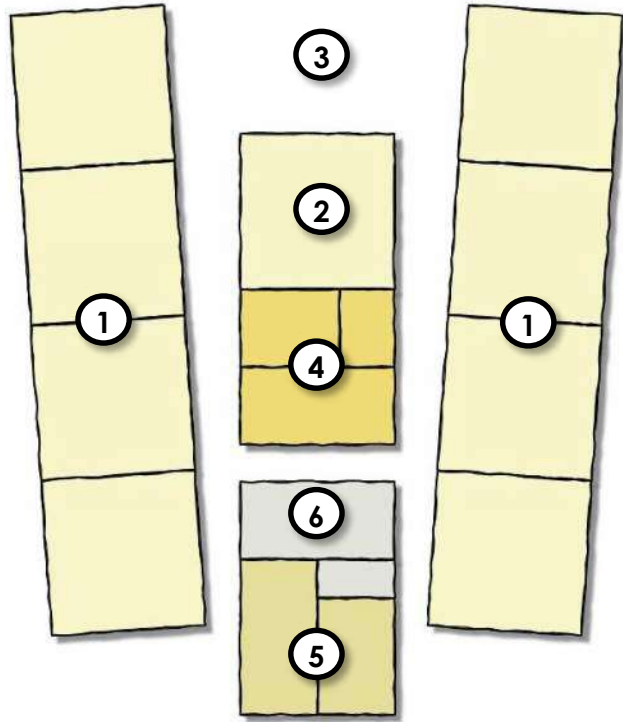
- ④ Black Box/Music/Art
- ⑤ Learning Commons
- ⑥ Lower Elementary Neighborhoods (K-2)

- ⑦ Upper Elementary Neighborhoods (3-5)
- ⑧ Play Areas

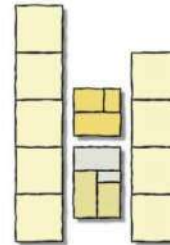
ENVISIONING YOUR SCHOOL / CONCEPTUAL RENDERING



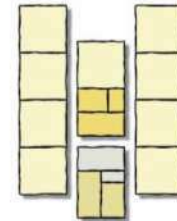
ENVISIONING YOUR SCHOOL / NEIGHBORHOOD DIAGRAM



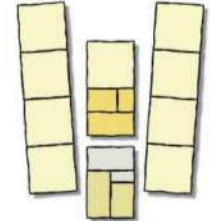
- ① Standard Classrooms
- ② Flex Classroom
- ③ Collaboration Area
- ④ Multi-Function Rooms (OT/PT, Special Education, Literacy)
- ⑤ Faculty/Staff Areas
- ⑥ Restrooms



Concept 1

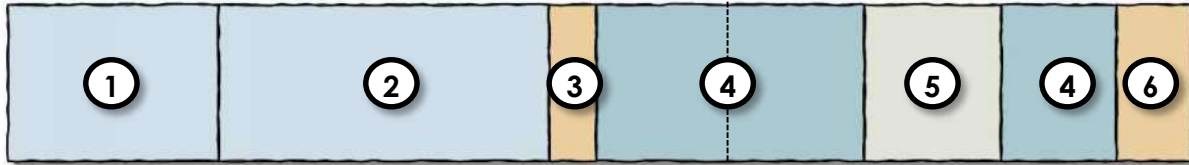


Concept 2



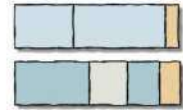
Concept 3

ENVISIONING YOUR SCHOOL / PUBLIC SPACES DIAGRAM

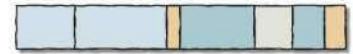


- ① Kitchen
- ② Cafeteria
- ③ Stage
- ④ Gym
- ⑤ Lockers, Storage & Offices
- ⑥ Multi-Purpose

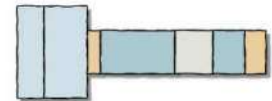
Concept 1



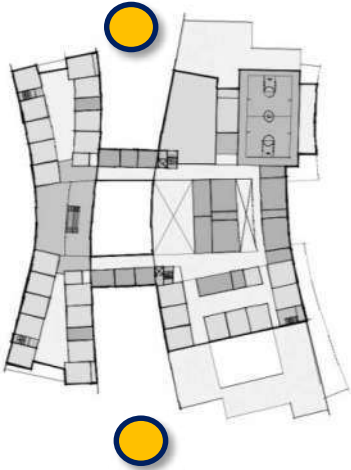
Concept 2



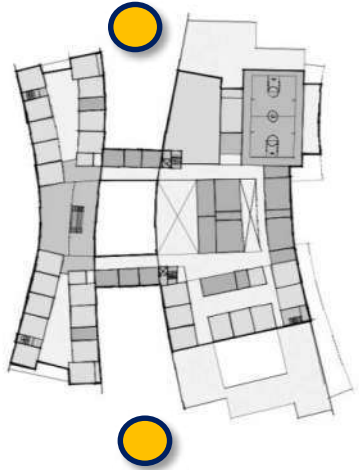
Concept 3



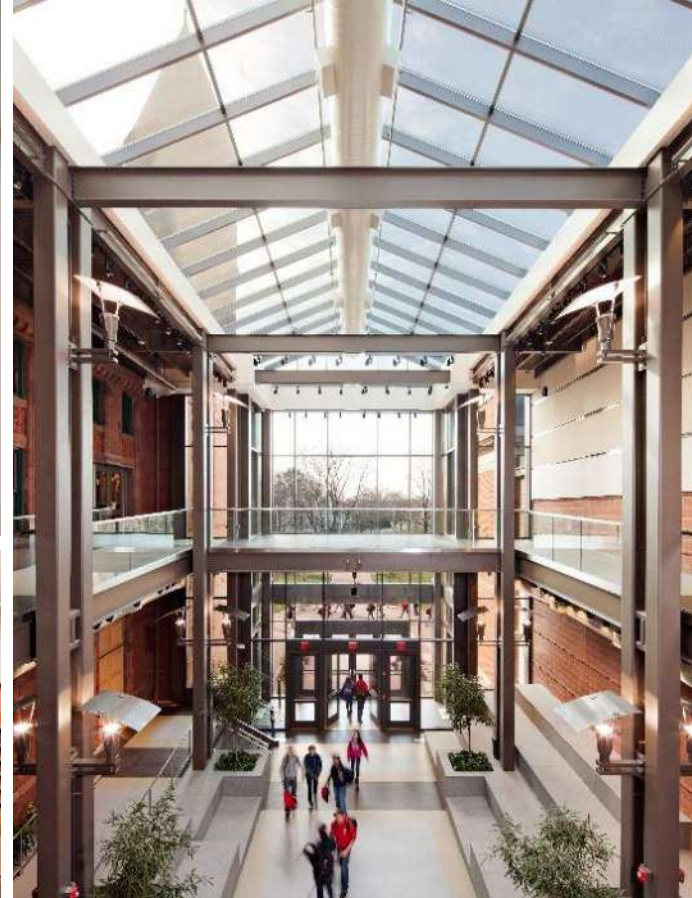
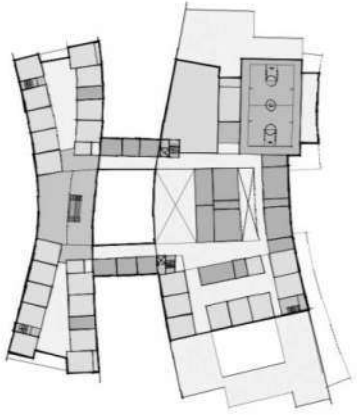
ENVISIONING YOUR SCHOOL / OUTDOOR LEARNING ENVIRONMENTS



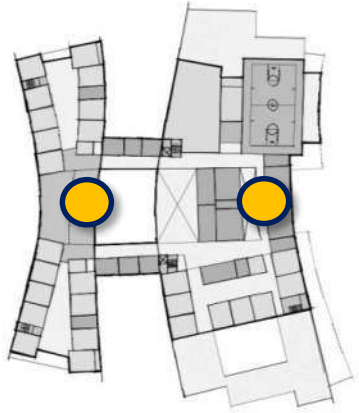
ENVISIONING YOUR SCHOOL / OUTDOOR ACTIVITY ZONES



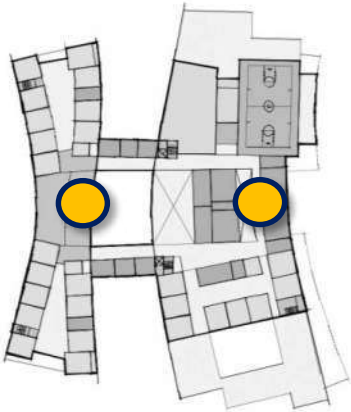
ENVISIONING YOUR SCHOOL / DAYLIGHTING



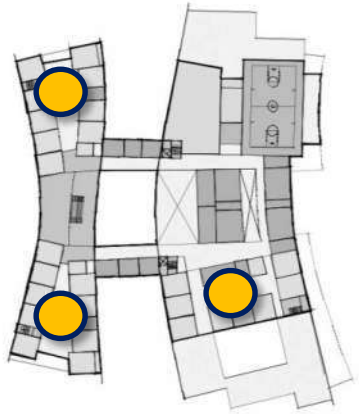
ENVISIONING YOUR SCHOOL / SOCIAL INTERACTION & COLLABORATION



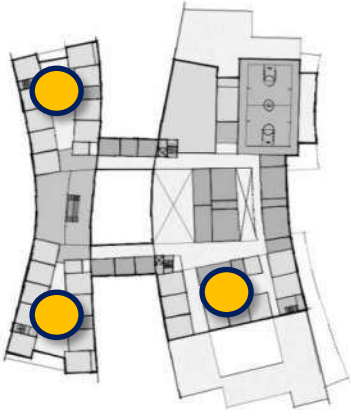
ENVISIONING YOUR SCHOOL / INQUIRY, PROJECT BASED LEARNING



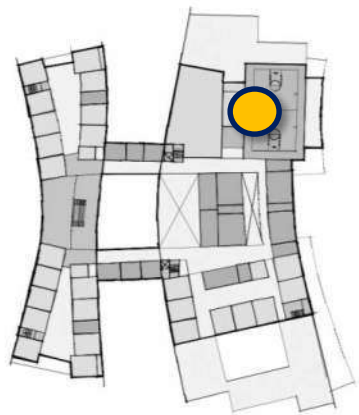
ENVISIONING YOUR SCHOOL / PUBLIC AND PRIVATE LEARNING AREAS



ENVISIONING YOUR SCHOOL / FLEXIBLE CLASSROOMS



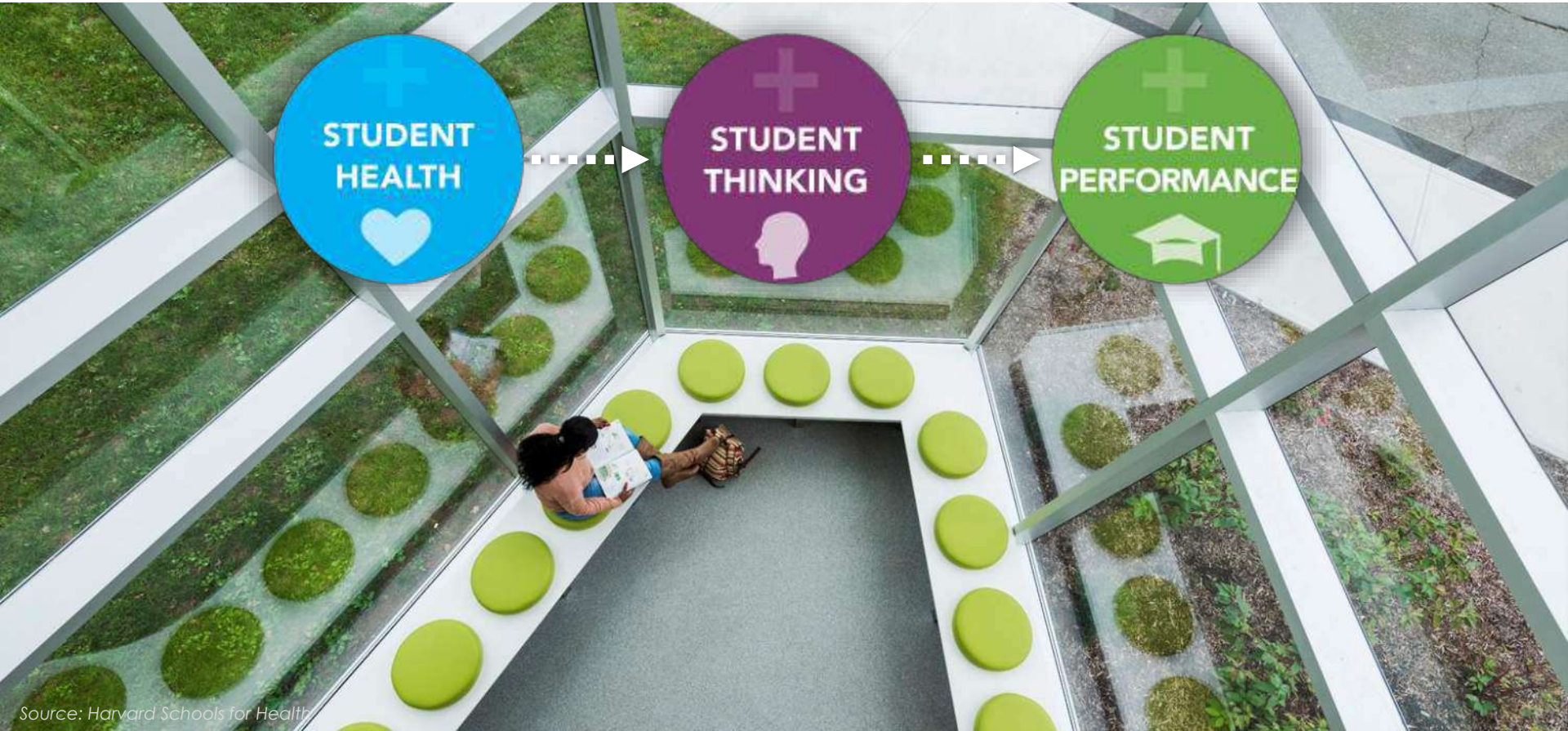
ENVISIONING YOUR SCHOOL / FLEXIBLE ASSEMBLY SPACES



An aerial photograph of a modern, multi-story building complex, likely a university or corporate campus. The building features a mix of architectural styles, including sections with large glass facades and others with solid walls. A prominent feature is a large array of solar panels installed on the roof of one of the central buildings. Another building in the foreground has a green roof. The surrounding area includes landscaped grounds with trees and a paved walkway. The entire image is overlaid with a semi-transparent blue filter. The word "SUSTAINABILITY" is written in large, white, sans-serif capital letters across the center of the image.

SUSTAINABILITY

WELL IS FOR PEOPLE



HOW CAN WE
OPTIMIZE THE
BUILDING THROUGH
DESIGN?

Fundamental Strategies:

Orientation

Envelope

Lighting

Mechanical Systems

Explore:

Active vs. Passive Strategies

Daylighting

Rainwater Harvesting

Geothermal

Energy Recovery

Photovoltaics

Solar Hot Water Heating

SUSTAINABILITY / DESIGNING TO YOUR GOALS

HOW CAN WE
OPTIMIZE THE
BUILDING THROUGH
DESIGN?

Fundamental Strategies:

Orientation

Envelope

Lighting

Mechanical Systems

HOW CAN WE
**MAKE SMALL
TWEAKS** TO
SAVE ENERGY?

Explore everything!

Engagement with
facilities, administration,
staff, educators, and
students

SUSTAINABILITY / DESIGNING TO YOUR GOALS

HOW CAN WE
OPTIMIZE THE
BUILDING THROUGH
DESIGN?

Fundamental Strategies:

Orientation

Envelope

Lighting

Mechanical Systems

HOW CAN WE
**MAKE SMALL
TWEAKS** TO
SAVE ENERGY?

Explore everything!

Engagement with
facilities, administration,
staff, educators, and
students

HOW CAN WE
**CREATE
ENVIRONMENTAL
STEWARDSHIP?**



An aerial, semi-transparent blue-tinted rendering of a modern architectural complex. The building features a central courtyard with a colorful, abstract mural on the ground. A large section of the roof is covered with solar panels. The building is surrounded by greenery, trees, and a winding path. The overall aesthetic is clean and futuristic.

LET US HEAR IT!