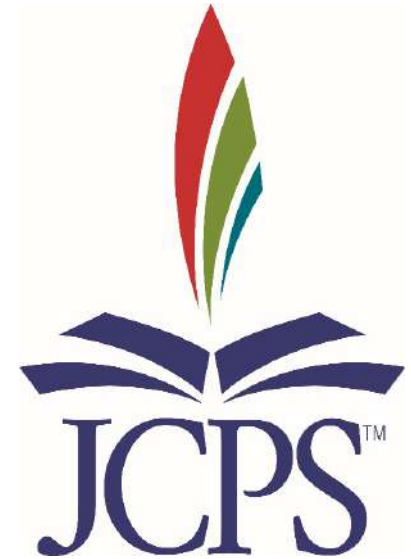


# JCPS Final Corrective Action Plan



*Kentucky Board of Education Meeting  
December 5, 2018*

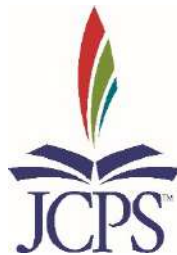
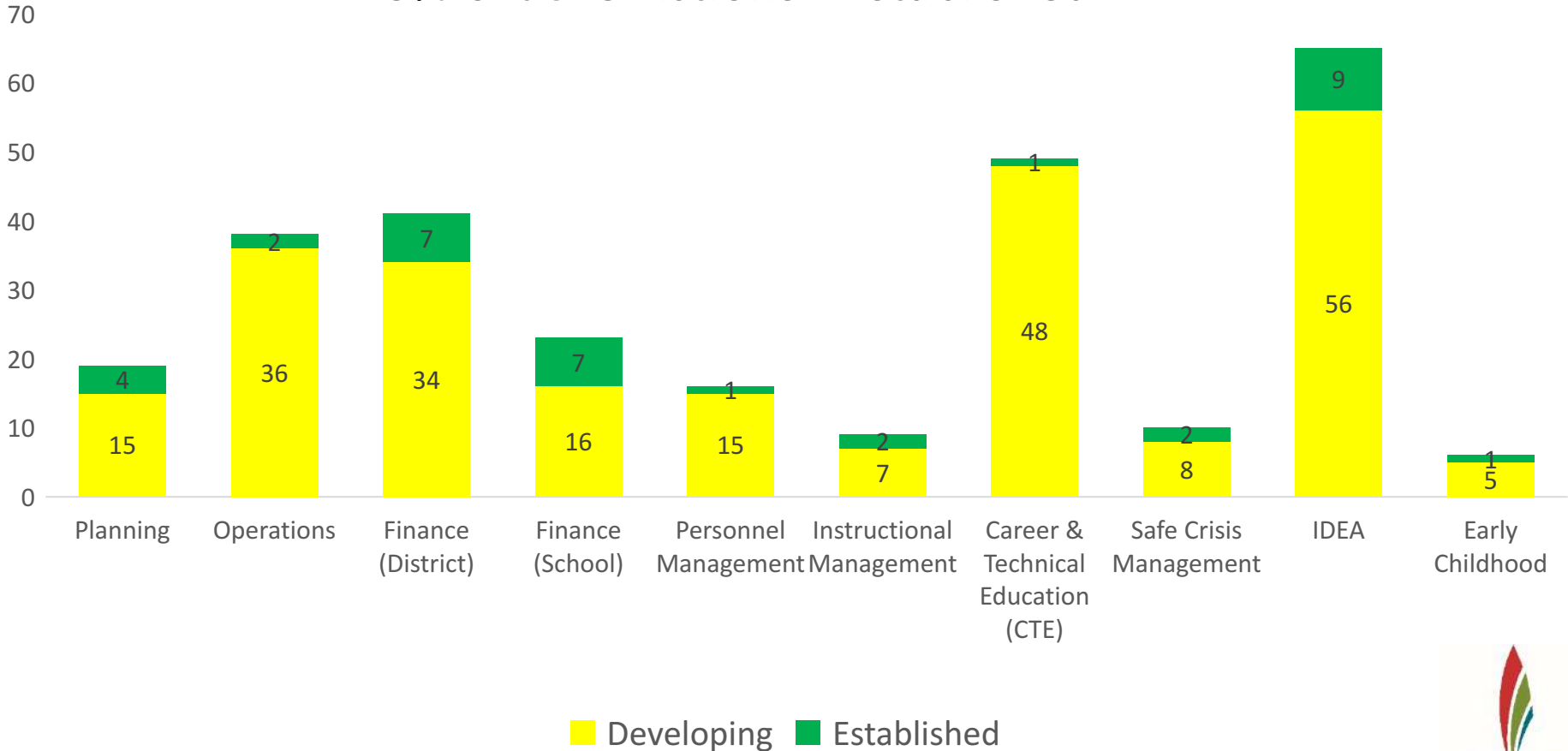
# Corrective Action Plan Areas

- Instructional Management
- Career & Technical Education (CTE)
- Planning
- Operations
- Finance (District)
- Finance (School)
- Personnel Management
- IDEA
- Safe Crisis Management (SCM)
- Early Childhood



# December 2018 – Status Update

13% of JCPS Actions - Established



# Instructional Management – Audit Findings

- Improve Communication
- Create Monitoring System
- Increase Accountability

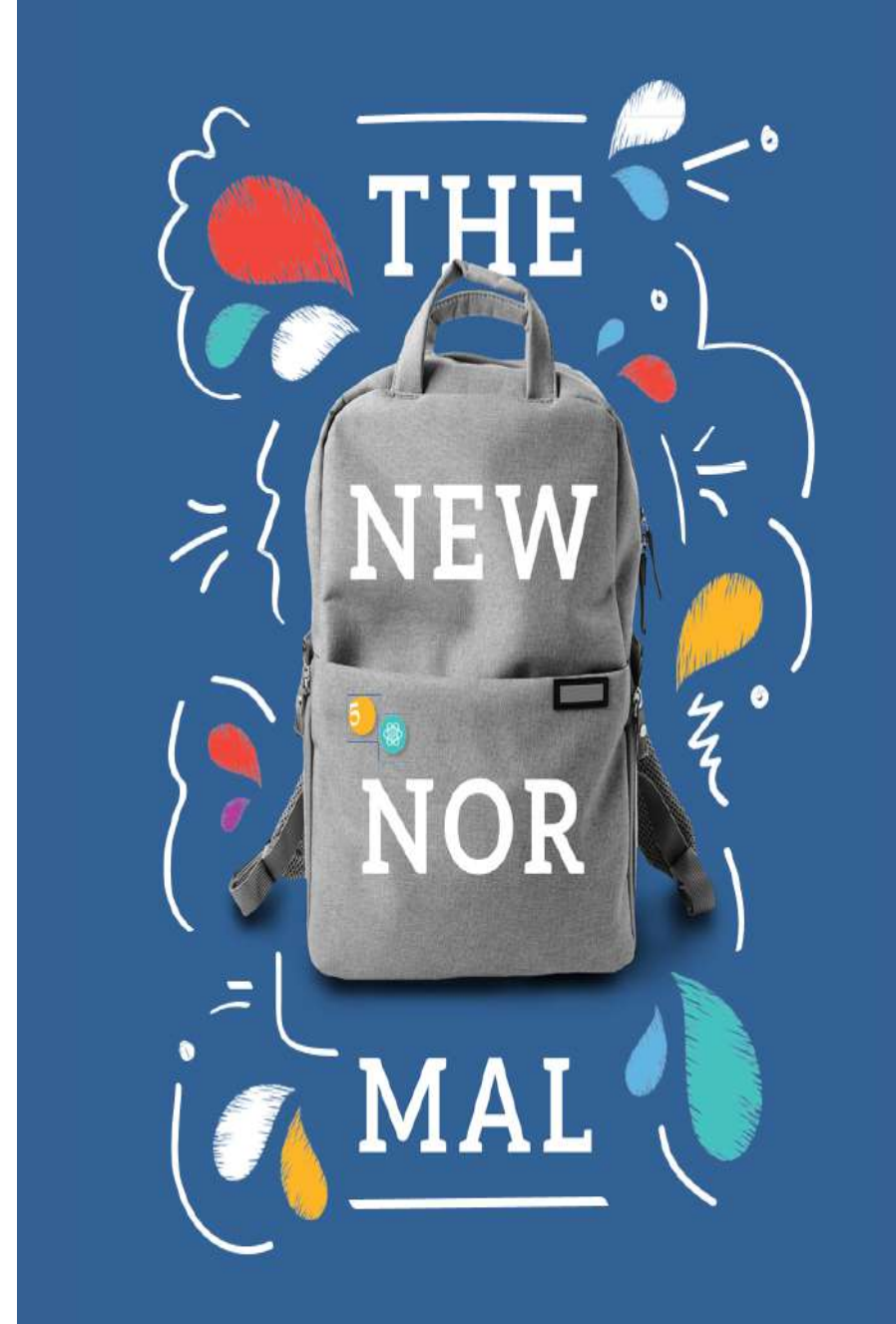
Progress Update – 9 actions: 7 developing and 2 established



# Backpack of Success Skills

---

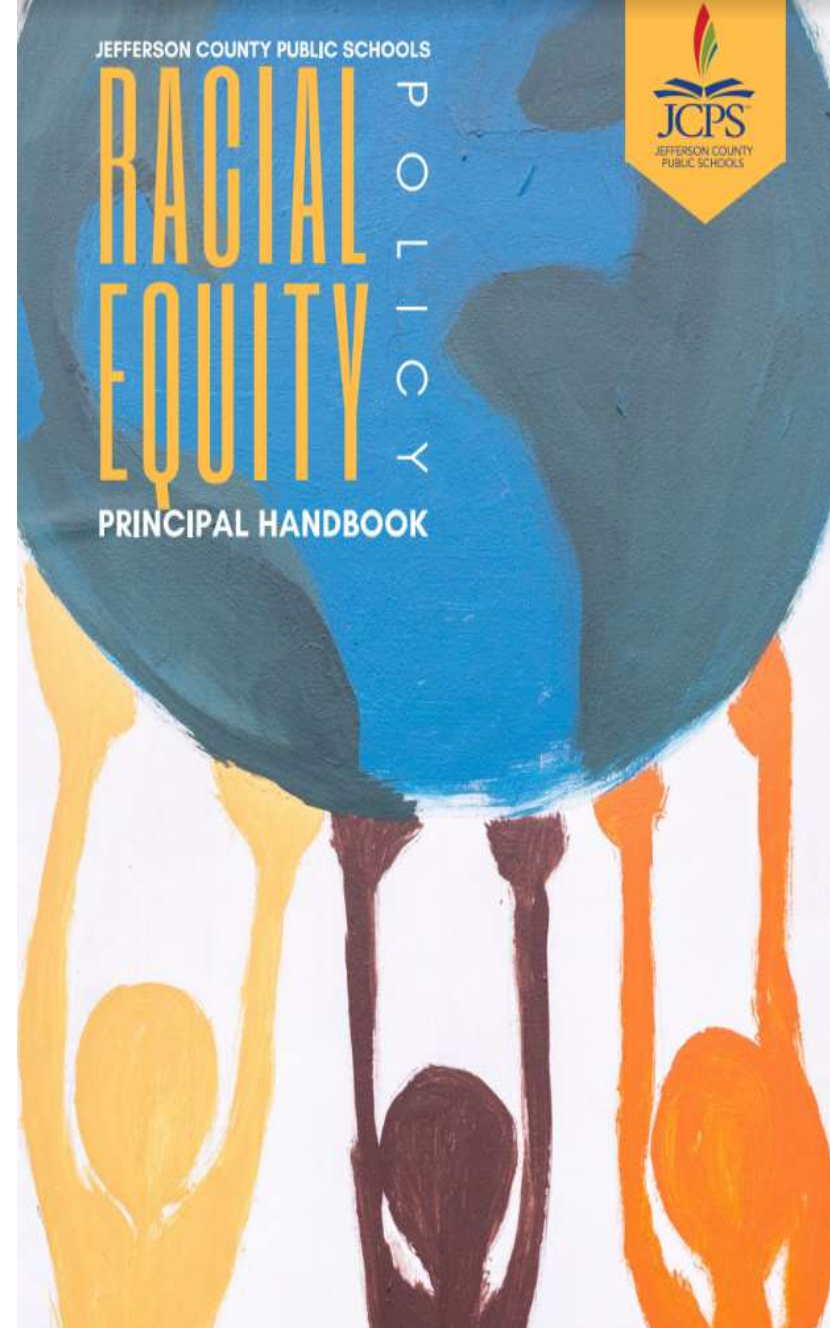
- Every student has a digital backpack with evidence of his or her development of content knowledge and success skills
- All 5th, 8th, 12th grade students will defend their growth and readiness before a panel



# Racial Equity Policy

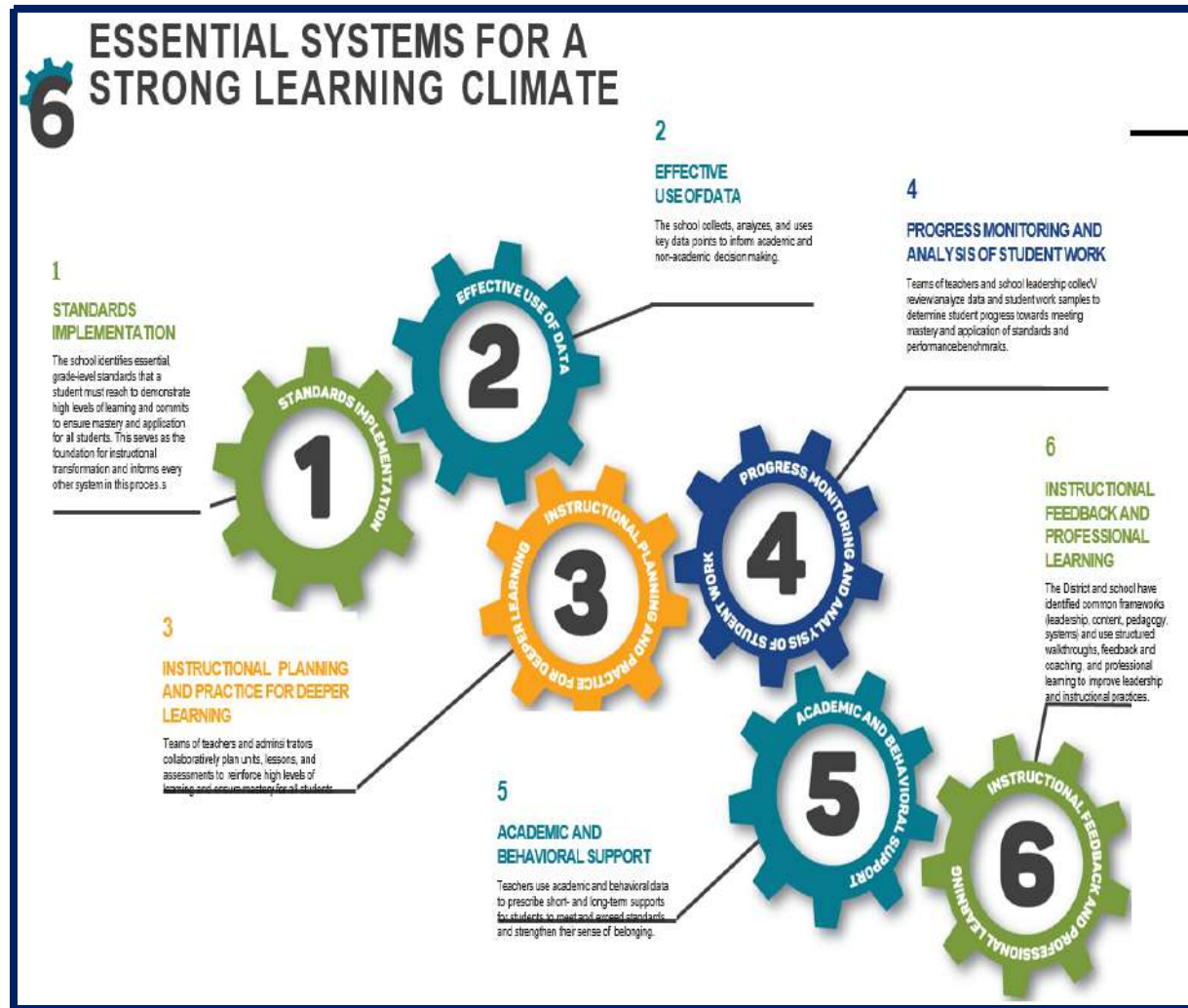
---

- Every school and the district has developed a racial equity plan
- Over 5,000 staff participated in Equity Institutes in October and November



# Transform Instructional Core

- Each Assistant Superintendent has a team to support schools in academics and behavior
- Schools and Assistant Superintendents complete weekly reflections
- Data reviews held monthly on key performance indicators
- MAP assessment administered 3 times per year



# Instructional Management - Summary of Evidence

- **Improve Communication**

- District-wide focus on three pillars
- Weekly wrap-up and emails, role group meetings, social media

- **Create Monitoring System**

- Weekly reflections
- Support team logs

- **Increase Accountability**

- Monthly data reviews
- Collaborative calibration visits
- Monthly calendar of CAP actions





# Instructional Management – Outcome Data

- Over 63,000 students have artifacts of success skills in their backpacks
- Decrease in behavior referrals by 4%
- Decrease in suspensions by 19%
- Improved student engagement - student's [story](#)



# Career Technical Education (CTE) – Audit Findings

- Improve data accuracy
- Strengthen pathways
- Build capacity in school staff
- Communicate value and benefits of CTE
- Explore opportunities to integrate core academics with CTE

Progress Update – 49 actions: 48 developing and 1 established





# THE ACADEMIES OF LOUISVILLE

## WHO'S INVOLVED?

14

JCPS HIGH SCHOOLS

Academy @ Shawnee  
Atherton  
Ballard  
Doss  
Fairdale  
Iroquois  
Jeffersontown  
Marion C. Moore School  
Pleasure Ridge Park (PRP)  
Seneca  
Southern  
Valley  
Waggener  
Western

85

LOUISVILLE BUSINESSES

**INAUGURAL BUSINESS PARTNERS AS OF  
JANUARY 30TH, 2018:**  
Building Industry Association of Greater Louisville  
Class Act Federal Credit Union  
Ford Motor Company  
GE Appliances, a Haier Company  
Kentucky Kingdom & Hurricane Bay  
Lantech  
Masonic Homes of Kentucky  
New West Agency  
Norton Healthcare  
Oxmoor Auto Group  
Paradise Tomato Kitchens  
Trilogy Health Services  
UAW  
UPS  
+ Many More and Counting!

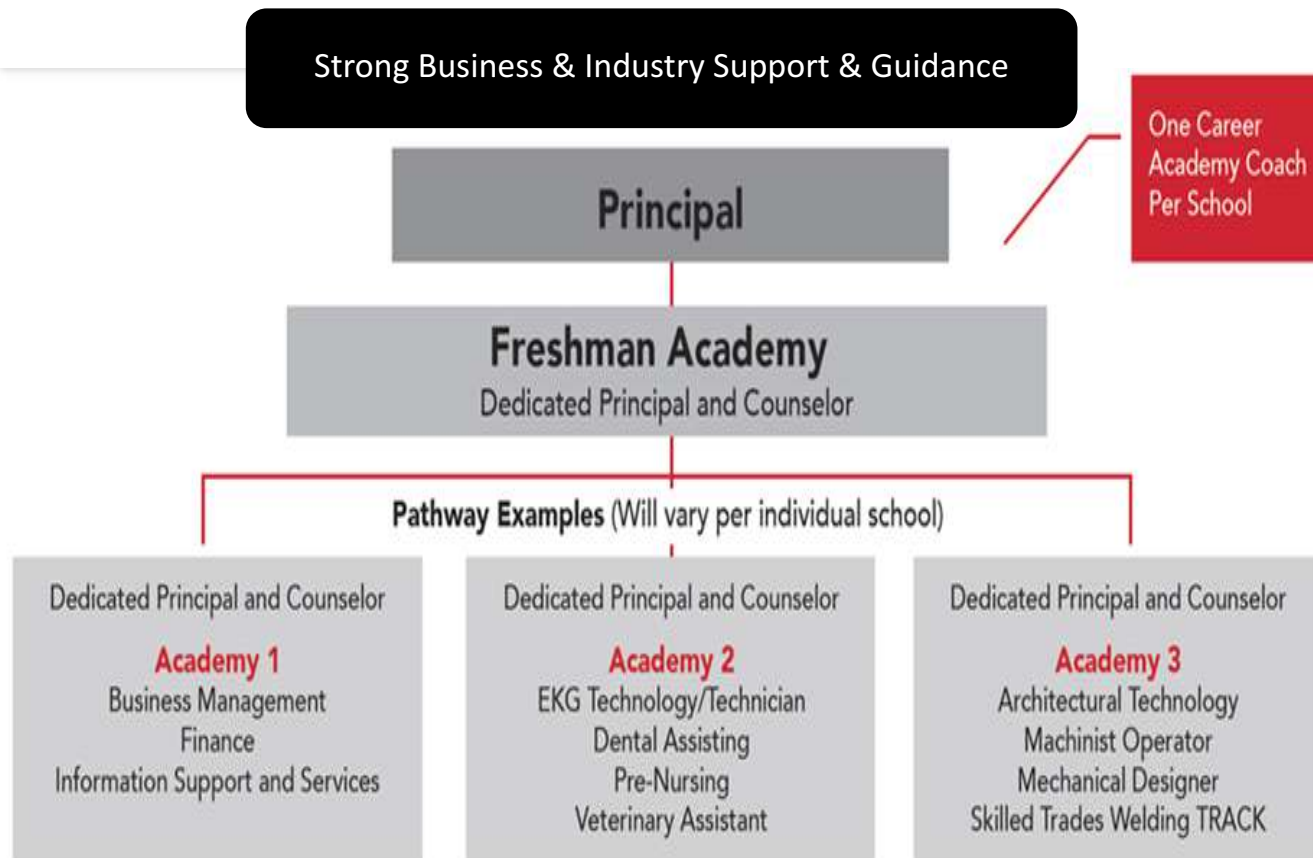
17,600

JCPS STUDENTS

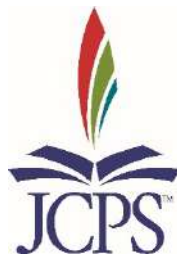




# THE ACADEMIES OF LOUISVILLE



**Electives:** Vocal Music/Choir, Instrumental Music/Band, Visual Art, Theatre/Drama, World Languages



# Transition

## Readiness- CTE

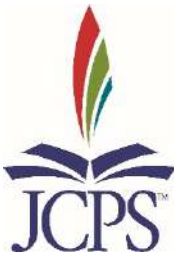
---

- Building opportunities for students with business partners - [GEA2Day](#) and [UPS](#)
- Nearly 6,000 students attended JA Inspire to explore careers at 100 interactive stations and speak with more than 400 mentors



# CTE – Summary of Evidence

- **Improve data accuracy**
  - Weekly audits of TEDS data
  - System to track each student’s progress (i.e., name and need)
- **Strengthen pathways**
  - Master schedule training and individual support
  - Accurate pathways and course codes
  - Expanding dual-credit opportunities (i.e. Chase grant)
- **Build capacity in school staff**
  - Training for counselors, academy coaches, SBDM councils, and school administrators
  - KDE training



# CTE – Summary of Evidence

- Communicate value and benefits of CTE
  - Mission/vision video
  - Advisory committee report card to improve effectiveness
  - Labor market information and high school feedback reports aligned to pathways
- Explore opportunities to integrate core academics with CTE
  - “Interdisciplinary teams” training
  - Exploration of integration of core academic and CTE professional learning communities
  - Expansion of Academies of Louisville



# CTE – Outcome Data

- 4,614 high school students are preparatory in a CTE Pathway
- 21 STEM Pathways at 12 locations with 2,807 students enrolled
- 8 Health Science pathways at 11 locations with 2,438 students enrolled
- 2,384 seniors currently transition ready (39%)
- 2,596 seniors in a pathway to transition readiness (42%) - expect significant increase number of students designated as transition ready
- JCPS will offer registered apprenticeships in more industry sectors than any other program sponsor (public or private) in Kentucky

