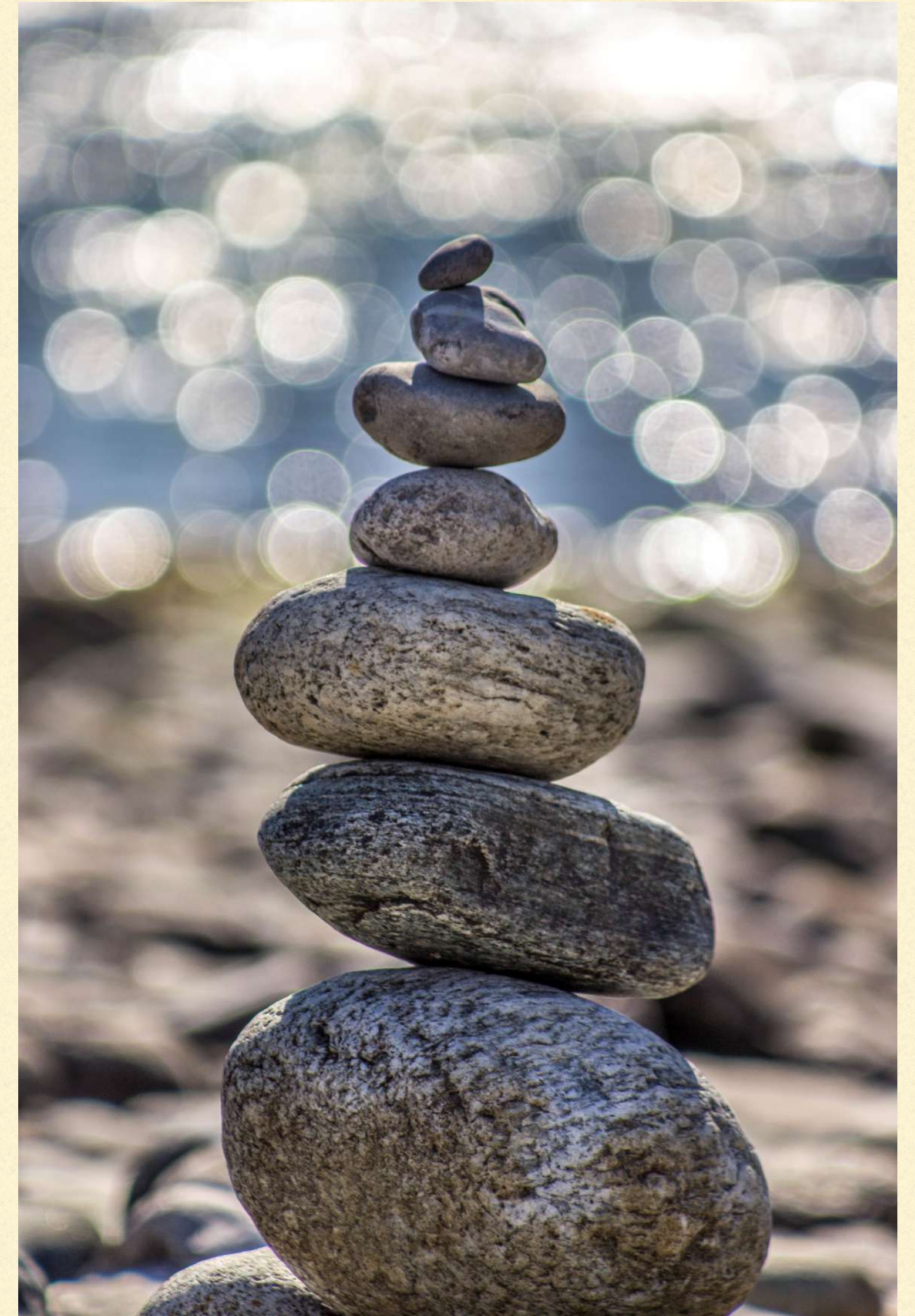

MHSA ANNUAL UPDATE

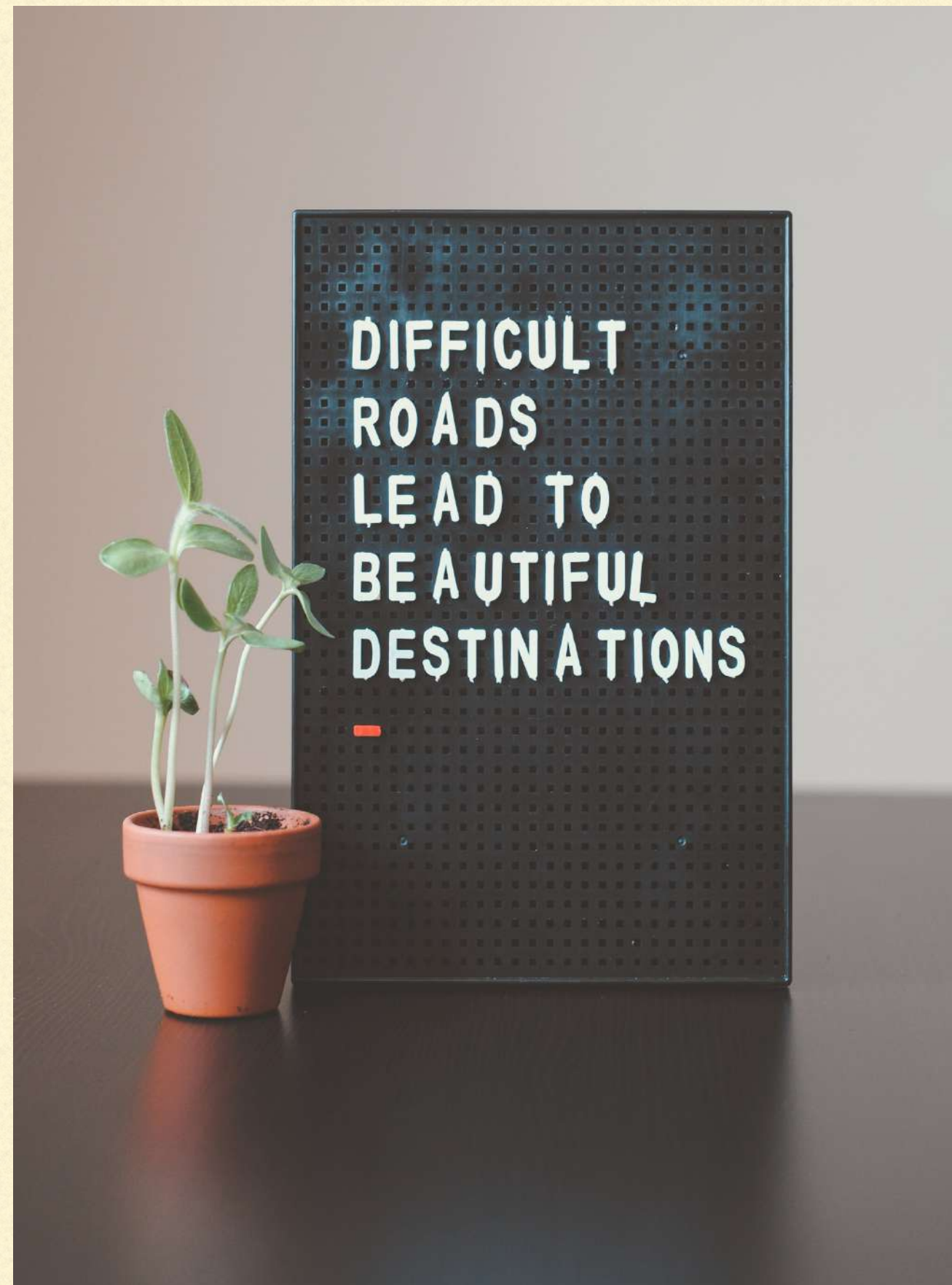
2021-2022

COMPONENTS

- Community Services and Supports (CSS)
 - ❖ Full Service Partnership
 - ❖ Outreach & Engagement
 - ❖ General System Development
- Prevention and Early Intervention (PEI)
- Innovation (INN)
- Workforce Education and Training (WET)
- Capital Facilities and Technology Needs (CFTN)



COMMUNITY SERVICES AND SUPPORTS



MHSA served 1, 419 clients in FY 19-20 through Community Services and Supports.

Youth ages 0-17 were 278 of that total.

Adults ages 18-64 were the largest group aided at 1,042, the remaining 99 were older adults.

MHSA funds are being leveraged to aid in the building of a housing complex that will ease the homeless epidemic in Siskiyou County, as well as fund a team of individuals from various agencies and backgrounds within the community to address life skills needed toward self-sufficiency and a reduction in dependence on community resources.

Six Stones Wellness Center on Main Street in Yreka is funded by MHSA monies and provides a space for individuals 18 and older where they are able to access services such as: laundry facilities, a kitchen, groups for women, Al-Anon, NA/AA, Creative Writing, etc. Transportation has been added this year to increase access for the community at large.

SERVICES FOR YOUTH

MHSA partners with various providers throughout the county to provide services.

Happy Camp: Mindful Little Campers is targeted at Kinder-4th grade youth at Happy Camp Elementary School teaching them the Mindful Schools and Kindness Curriculum from the Center of Healthy Minds.

East County: Tiny, Mighty, and Strong will continue to serve youth in Merrill, Malin, Tulelake, and Dorris. This summer camp program is expanding to including weekday school outreach as well using restorative justice practices and substance abuse services (SUD) for youth 7th-12th grade.

Scott Valley: A previously existing program called Etna Pal is expanding its goals to reach more youth ages 5-18 through 5 valley schools providing trauma-informed classes, mentoring, recreational activities, field trips, and screening kids using the ACES.

South County: MHSA will be partnering with a new contractor, Dunamis Wellness, to provide services to Weed and McCloud schools with counselor led peer support groups, adult mentoring, and Botvin Life Skills for youth 6th-8th grade.

North County: Yreka High School will be employing a licensed counselor to develop and run youth groups, and a student leadership program utilizing MHSA funding.

SERVICES FOR ADULTS

- MHSA supports the Happy Camp Community Center's efforts toward recovery and wellness of the Slater Fire Survivors.
 - Tulelake and Dorris area will continue to have translation services to aid mono-lingual Spanish speaking community members in accessing mental health and substance abuse services. The Tulelake/Newell Family and Senior Resource Center will again expand their reach to provide services to the Dorris community.
 - Resource centers in Yreka, Weed, Montague, Tulelake, Mt. Shasta, Dunsmuir, Scott Valley, and Happy Camp will continue a focus on parenting classes, mental health stigma reduction workshops, and various mental wellness courses.
 - Crisis Services are provided 24 hours at the local hospitals and jail to assist in psychiatric hospitalization, stabilization, and reduce over-burden of the local hospitals with our communities' mentally ill.
 - Full Service Partnership (for youth and adults) serves to assist eligible clients in attaining their goals to stabilize and grow with the ultimate goal of transitioning to a lower level of care or out of mental health services all together. Services can range from support in acquiring educational supplies/expenses to emergency housing assistance.
-

ADDITIONAL SUPPORT

Behavioral Health will be renewing contracts and services with:

Lotus Educational Services for Suicide Prevention and Mental Health First Aid with a focus on First Responders and Educators.

Hellikon for 3 youth-led de-stigmatizing mental health videos (Directing Change) as well as an informational Behavioral Health video for the community to improve visibility of available services throughout the County.

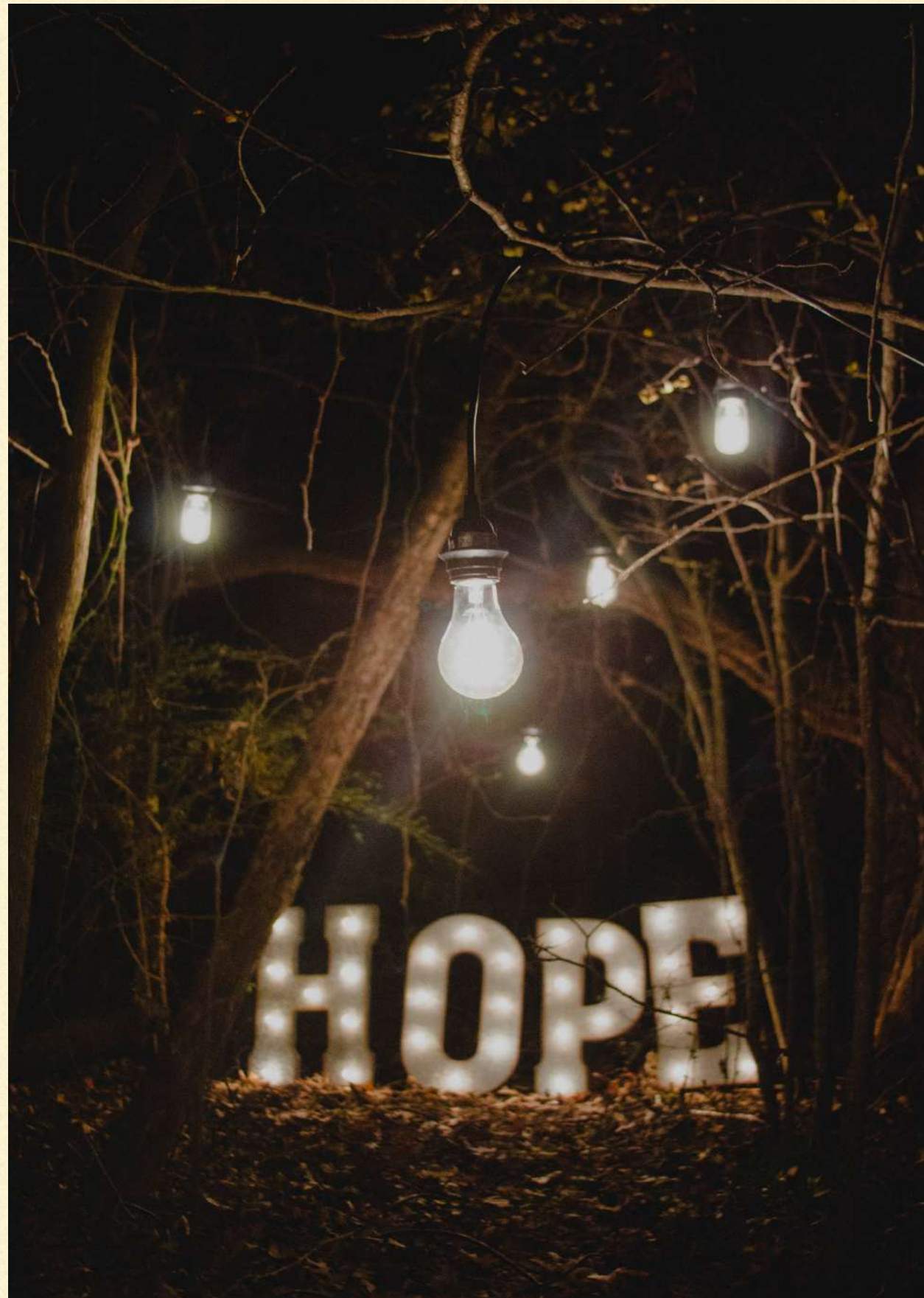
Karuk Tribal Housing Authority for support groups within the tribe serving youth ages 9-18, as well as the Gathering of Native Americans for tribal elders and members.

First 5 for mental health screenings of youth ages 0-5, community training and events with an emphasis on supporting parents through challenging COVID times, as well as professional trainings for mental health providers.

Healthy Siskiyou Mobile Unit for COVID testing, and linkage to SUD and Mental Health services.



INNOVATION



In keeping with our Full Service Partnership (FSP) goals to assist clients towards self sufficiency and growth, Behavioral Health initiated an evidenced based practice called Strengths Based Case Management. This practice is designed to help FSP clients identify personal strengths, create a clear plan to assist them in obtaining their goals, which in turn will lead them to graduating from this level of service.

Behavioral Health has continued with the current multi-county collaborative Innovation project which was designed to restructure the way success is measured for FSP's, enhance outcome measurements, and more clearly define the data that is reported to the State. This project is focused on improving Behavioral Health's ability to track and monitor FSP's progress toward graduation from this high-cost service toward a lower level of care and ultimately into wellness.

WORKFORCE EDUCATION & TRAINING & CAPITAL FACILITIES & TECHNOLOGY NEEDS

Workforce Education and Training (WET):

WET funds will continue to be allocated toward building capacity to enhance programs, training community partners on relevant health issues such as 5150 protocols, PEI activities, and evidence based prevention programs.

WET funds also contribute to the Continued Education Assistance Program for staff who wish to enhance their learning in the areas of mental health or substance use.

Siskiyou County contributes to MHSA Statewide WET to fund pipeline/career awareness, scholarships, stipends and loan repayment programs through California's Office of Statewide Health Planning and Development.

Capital Facilities and Technology Needs (CFTN):

Funds from this area of MHSA will continue to support Behavioral Health's electronic health record and the ongoing maintenance of that software including upgrades, equipment, and participation in a health care exchange.

