

VOCABULARY UNIT #5

A photograph of a person standing on a rocky ledge inside a cave. A bright beam of light shines down from an opening above, illuminating the person and the surrounding rock formations. The cave walls are dark and layered with rock.

TOLENTINO TEACHING

ERRATIC



[VIDEO LINK](#)

[WORKSHEET LINK](#)

A young man with short brown hair and blue eyes, wearing a grey t-shirt, looking directly at the camera with a confused or questioning expression. The background is plain white.

AMBIGUOUS

VIDEO LINK

WORKSHEET LINK

PERSISTENT

A silhouette of a man pushing a large, heavy rock up a sand dune. The scene is set against a bright, golden sunset sky with scattered clouds. The man is in profile, leaning forward with his back to the rock, pushing it up the slope of the dune. The lighting is dramatic, with the sun low on the horizon, creating a strong backlight effect on the man and the rock.

[VIDEO LINK](#)

[WORKSHEET LINK](#)

ENIGMA



[VIDEO LINK](#)

[WORKSHEET LINK](#)

VIDEO LINK

WORKSHEET LINK

SUCCINCT



TORRENTIAL

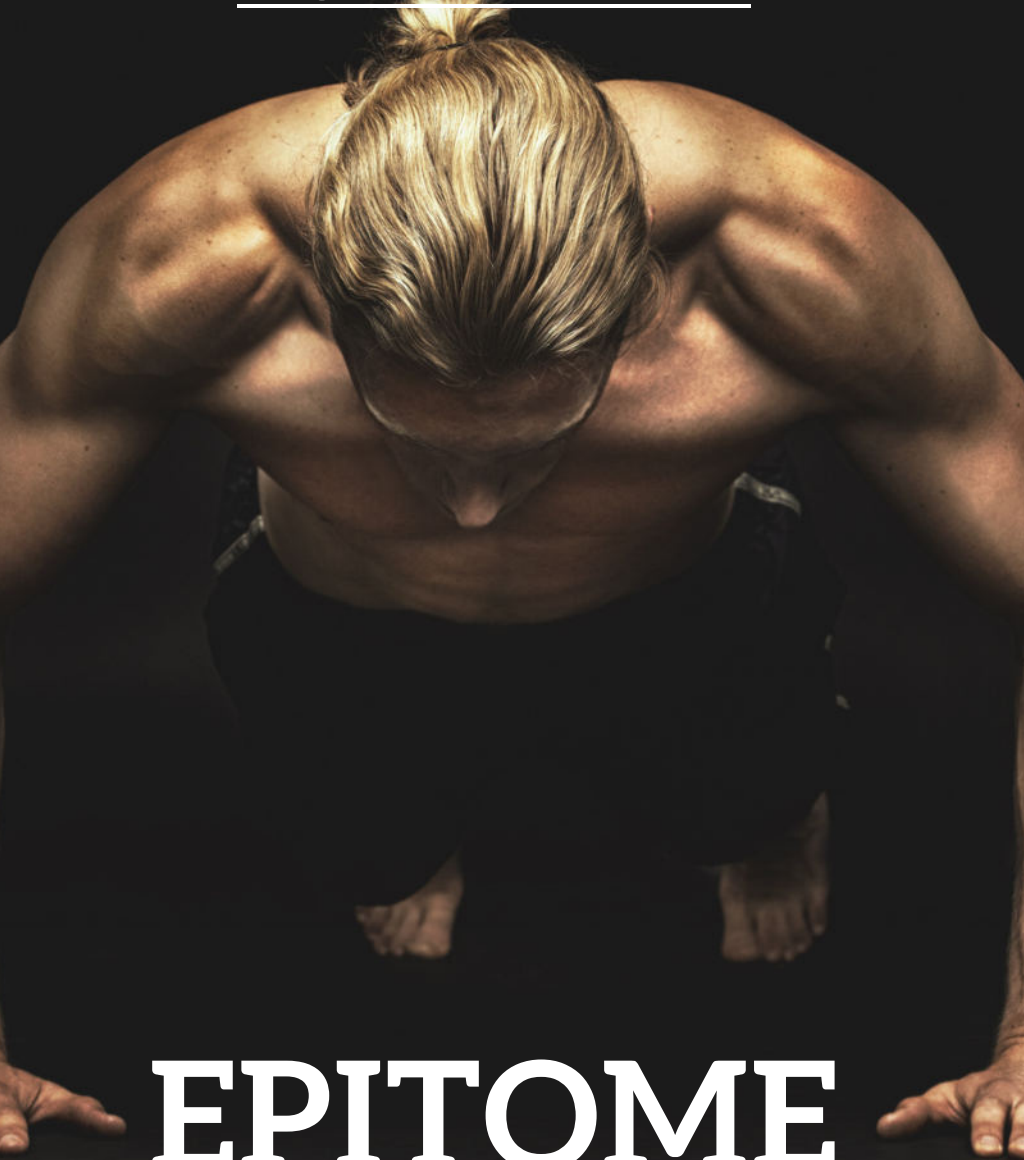


[VIDEO LINK](#)

[WORKSHEET LINK](#)

VIDEO LINK

WORKSHEET LINK



EPITOME

REFUTE



[VIDEO LINK](#)

[WORKSHEET LINK](#)

USE YOUR 8 VOCABULARY WORDS IN A CREATIVE STORY



[VIDEO LINK](#)

[WORKSHEET LINK](#)

DEMONSTRATE THAT YOU CAN USE YOUR VOCABULARY WORDS

[VIDEO LINK](#)

[WORKSHEET LINK](#)





Vocabulary

GOOGLE DOC OF
VOCABULARY ACTIVITIES

TOLENTINO TEACHING

Check out our resources below:

YouTube Channel:



Website:

TOLENTINO TEACHING

Buy me a Coffee:



Subscribe to our Newsletter:



TPT Store



Vocabulary Activities

TOLENTINO TEACHING