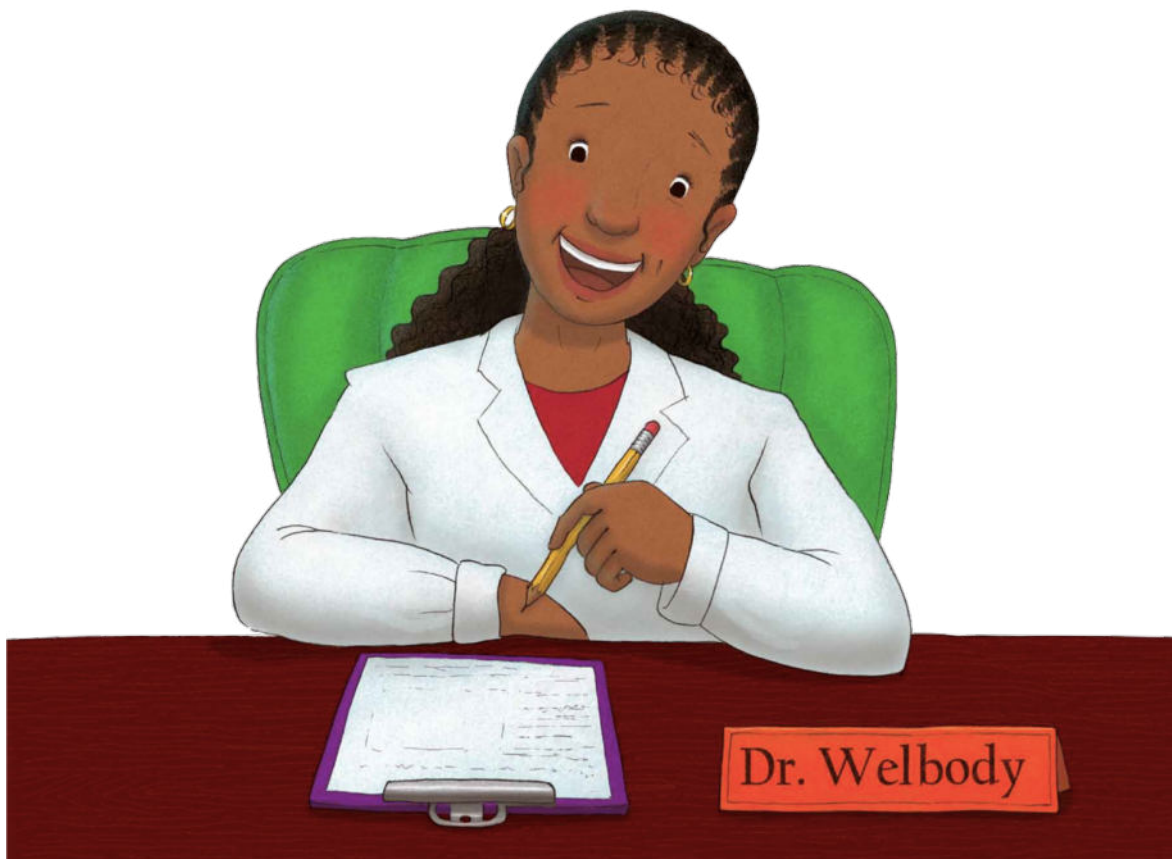


Topic Sentence

One sentence, usually the first, that tells the main idea, or what the paragraph is mostly about.



Concluding Sentence

One sentence, always the last, that wraps up the paragraph.

It does not introduce new information. Often, it restates the topic sentence



The Mowse Hole
Your Classroom Wall
Mowse Land U.S.A.
September 30 2011



dear friends,

i have been listening to your teacher tell you
about real animals for the last few weeks i
love learning about animals because I am one
I no you have met my relative, Rattenborough
i thought i would write a report about animals
and leave it for you to read

i had trouble writing my report my sentences
seem to be out of order can you help me
Thank you so much

sincerely,

mr. mowse

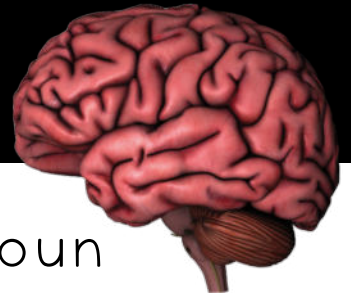
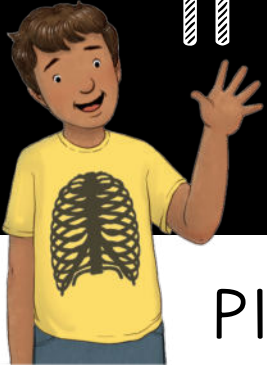


Plural Nouns

Words that name **MORE
THAN ONE** person, place, or
thing



Irregular Plural Nouns



Plural Noun- more than one noun

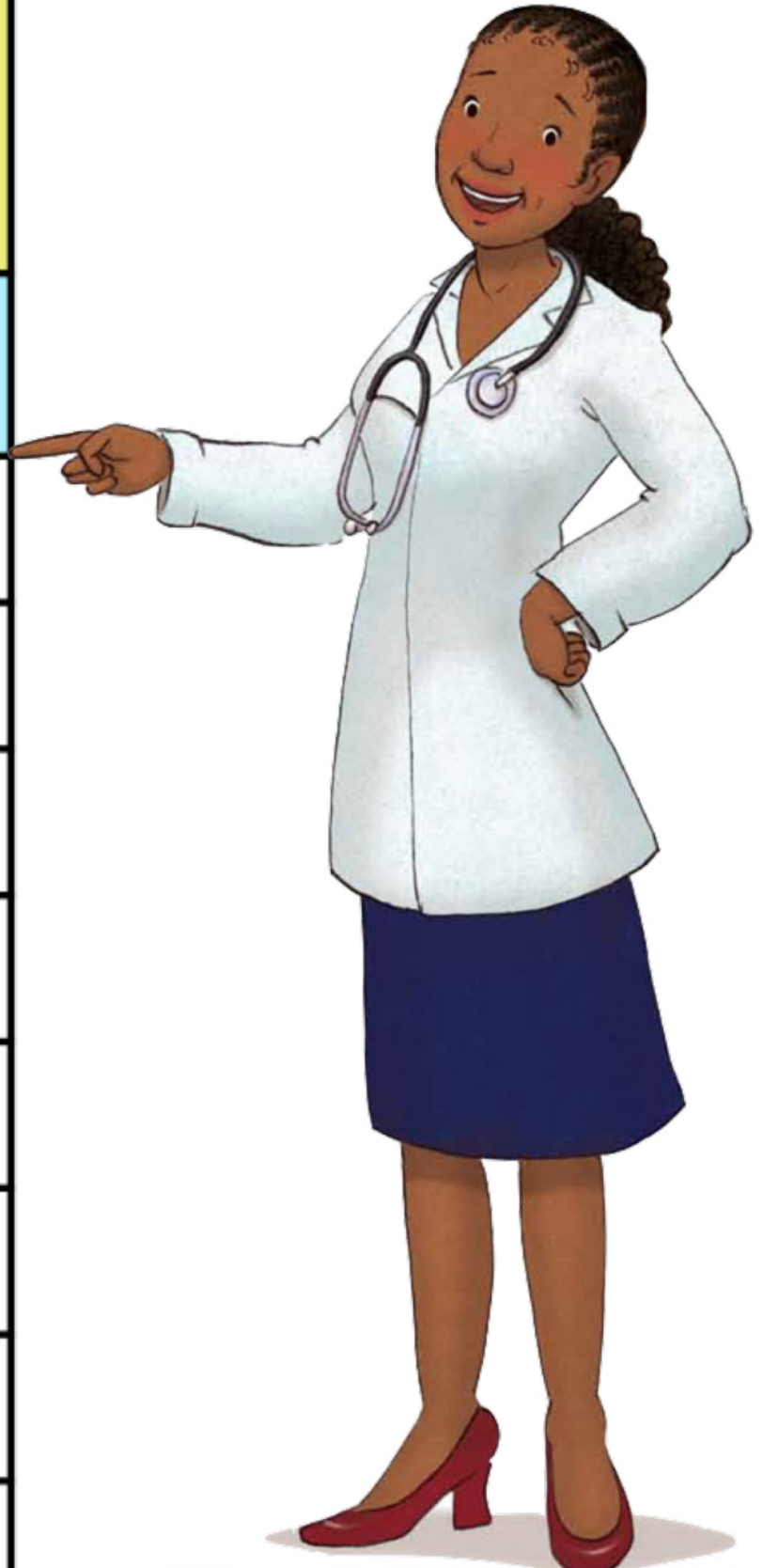
Irregular Plural Noun- noun that has a special spelling when there is more than one

Sometimes, irregular plurals follow certain spelling rules. Sometimes, they do not and they change completely.

| | | |
|---------------------------------------|------------------------|--|
| SOME Words with -oo- | Change to -ee- | goose > geese tooth > teeth |
| SOME Words that end with -f | Changes to -ves | leaf > leaves hoof > hooves |
| SOME Words change completely | | child > children mouse > mice |
| SOME words don't change at all | | fish > fish deer > deer |

PREFIXES

| DIS | MIS |
|------------|------------|
| not | wrongly |
| disable | misspell |
| dislike | misuse |
| disagree | misbehave |
| disobey | mistreat |
| disloyal | misquote |
| disinfect | mislead |
| dishonest | misfortune |
| disconnect | miscount |





prefix Dis

| ROOT WORD | MEANING | AFFIXED WORD | MEANING | SENTENCE |
|-----------|--|--------------|--|--|
| Obey | (verb) to do what someone tells you to do | disobey | (verb) to not do what someone tells you to do | Our new puppy might <u>disobey</u> us until we teach her how to behave when we call her. |
| Trust | (verb) to believe that someone or something is honest and truthful | distrust | (verb) to not believe that someone or something is honest and truthful | I <u>distrust</u> the race results because the timers were not working properly. |
| Like | (verb) to enjoy something | dislike | (verb) to not enjoy something | My sister and I <u>dislike</u> asparagus but we like broccoli. |
| Connect | (verb) to join together | disconnect | (verb) to separate | Dan had to <u>disconnect</u> the video game console from the television to see what was wrong with it. |
| Approve | (verb) to accept something | disapprove | (verb) to not accept something | Mom said she would <u>disapprove</u> of us playing soccer unless our homework was finished. |

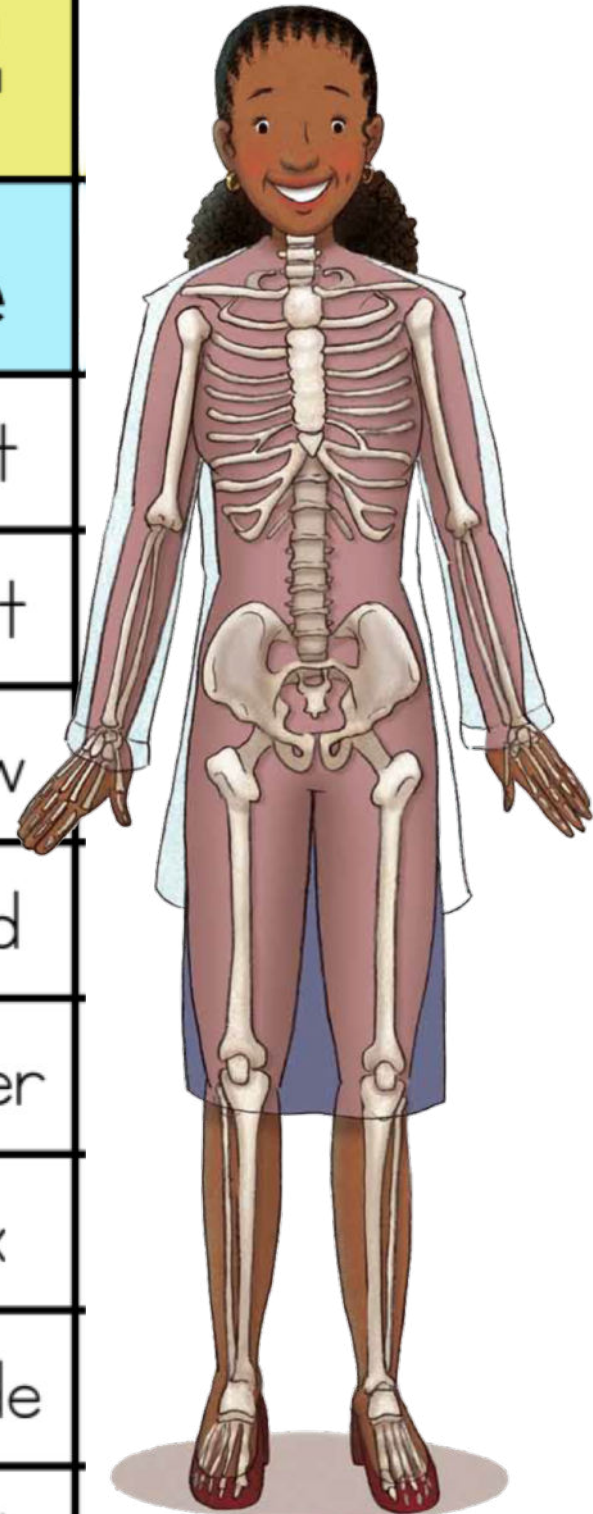


prefix Mis

| ROOT WORD | MEANING | AFFIXED WORD | MEANING | SENTENCE |
|------------|--|---------------|---|--|
| Spell | (verb) to write or name the letters in a word in the correct order | misspell | (verb) to write or name the letters in a word in the wrong order | Rachel hoped she did not <u>misspell</u> any words on her spelling test. |
| Judge | (verb) formed an opinion | misjudge | (verb) formed an opinion that is wrong | The driver <u>misjudged</u> the turn and took it too fast. |
| Understand | (verb) to know the meaning of | misunderstand | (verb) to know the wrong meaning of | The teacher asks her students to tell her if they <u>misunderstand</u> anything in the science lesson. |
| Placed | (verb) put something in a certain location | misplaced | (verb) put something in the wrong location | Dana <u>misplaced</u> her keys, and cannot drive to work until she finds them. |
| Used | (verb) did something with an object while performing a task | misused | (verb) did something wrong with an object while performing a task | My little sister <u>misused</u> the markers, and left stains all over the couch. |

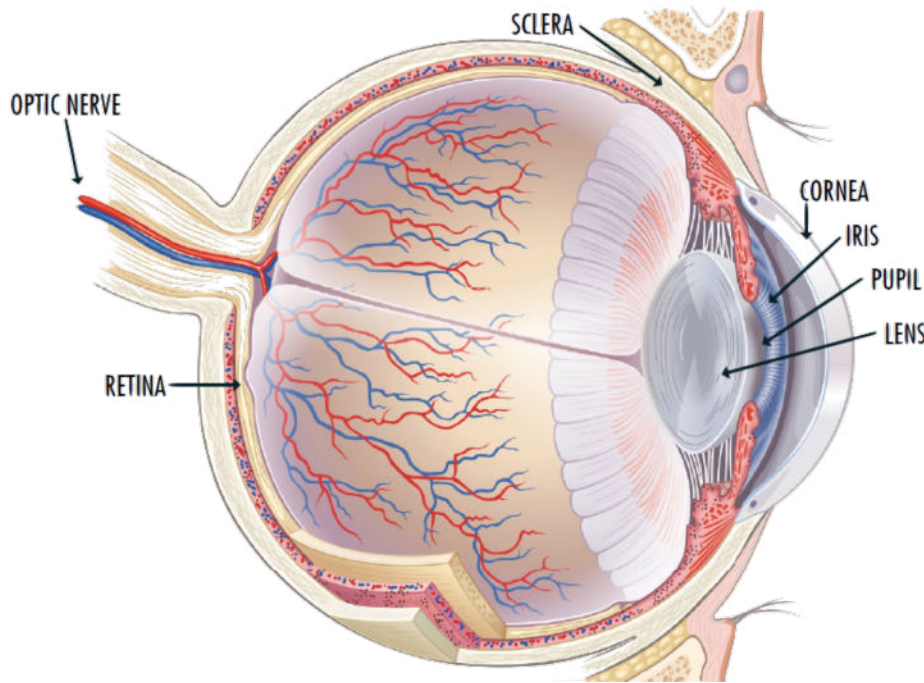
PREFIXES

| UN | RE | PRE |
|---------|---------|----------|
| not | again | before |
| unhappy | retest | pretest |
| undo | redo | preheat |
| unreal | recycle | preview |
| uneven | reuse | prepaid |
| unhook | reteach | preorder |
| unkind | reread | premix |
| unsafe | rewrite | premade |
| unfair | rework | precook |



Main Idea

The main idea is what the text is mostly about.



Clues to Finding the Main Idea:

“What is the text mostly about?”

Look at the title.

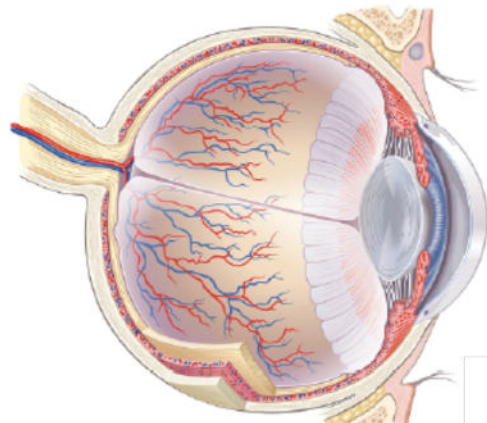
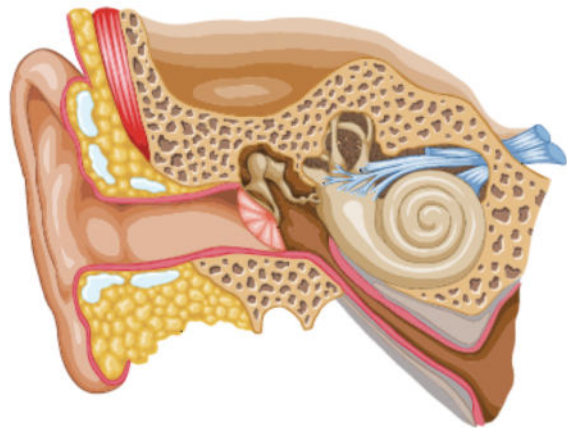
Look at the pictures and captions.

Check the first and last sentence.

Notice words that are repeatedly used.

SUPPORTING DETAILS

Support the main idea.



Clues to Finding Supporting Details:

Facts that tell you more about the main idea.

Details that tell you more about the main idea.

Subject pronoun

A part of speech that takes the place of a noun. Every pronoun always refers to a specific noun. When a pronoun is the subject of the sentence, it is called a subject pronoun.

Singular

I

you
(one)

he, she, it

Plural

we

you
(more than one)

they



parts of the Eye

cornea

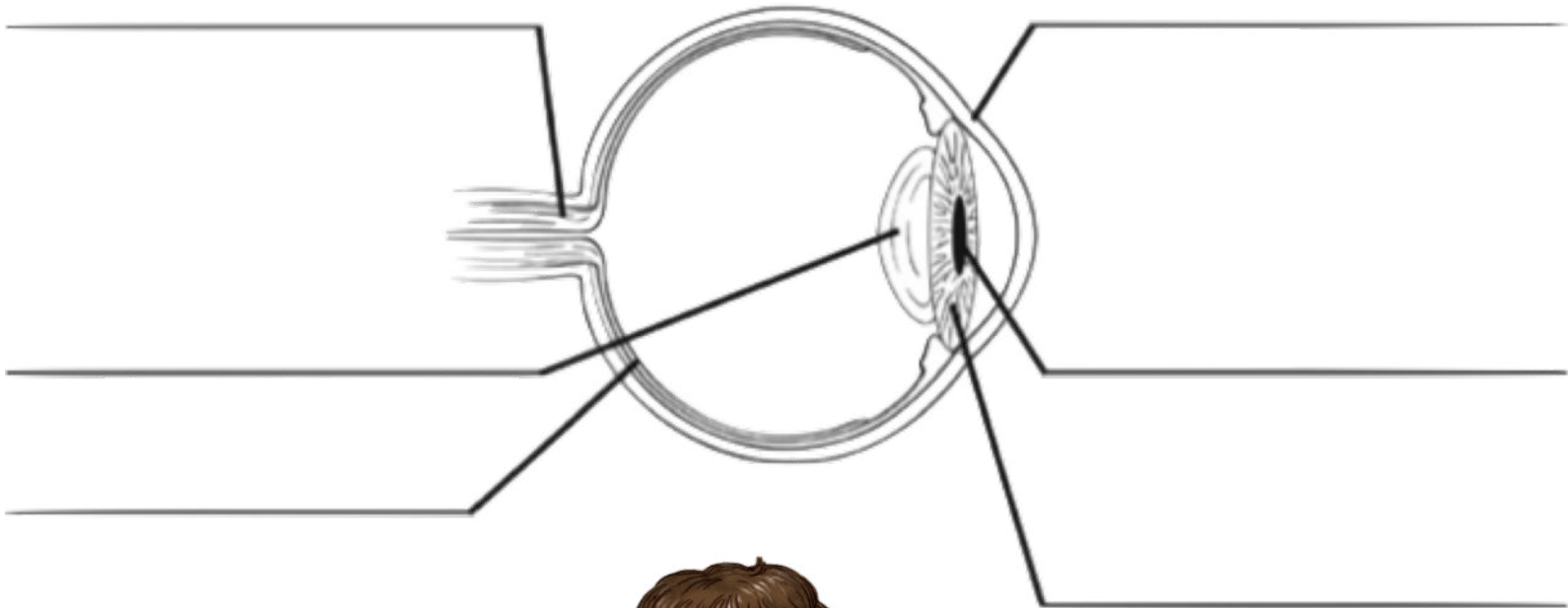
iris

pupil

optic nerve

retina

lens



parts of the Ear

ear canal

sound wave

eardrum

ear bones

auditory
nerve

cochlea

